

avonterra

SHOT

NOV 2018 ISSUE 83

featuring
JOJO CURREY
MARIA ELAINA
SCARLETT MARIE
VICTORIA SMYTH
POLLY CRAIG
STEPH SIMPSON

Kaitlyn
HARLOW

**VIEWER
DISCRETION
ADVISED**

This magazine shows the lifestyle of a glamour/fashion model and is meant to entertain/educate the viewer/readers about the modeling industry. It may include images with partial nudity which are in sync with the content. We do not intend to offend, hurt, discredit or demean the feelings of any person, caste, community, religion or any section of society. This magazine is for adults only. If you are under the age of 18 and/or if such material offends you or if it is illegal to view such material in your community please exit this magazine. Viewer discretion is advised.



facebook.com/modelzview



twitter.com/modelzview



youtube.com/modelzview



A SUPPLEMENT OF MODELZ VIEW™ MAGAZINE

www.modelzview.com

Join us on    /MODELZVIEW

VISIT **WWW.MODELZVIEW.COM**

CONTACT

For advt booking - Advt@modelzview.com

For content publishing - publish@modelzview.com

FOR INQUIRIES - info@modelzview.com

EDITOR, MANAGING DIRECTOR & C.E.O

RAMAN VERMA

CONTENT WRITERS

TEAM MODELZ VIEW

DESIGN N GRAPHICS

MV DESIGN LAB

MODEL MANAGEMENT

MODELZ VIEW MODEL MANGEMENT

LEGAL DISCLAIMER AND TERMS OF USE

AQSTRASHOT is a supplement of Modelz View Digital Magazine available worldwide on the website www.modelzview.com and other digital magazine stores. The writing, the artwork and photography contained herein may not be used or reproduced without express written permission. MODELZ VIEW doesn't assume responsibility for loss or damage of unsolicited products, manuscripts, photographs, artwork, transparencies or other materials. MODELZ VIEW does not assume any liability for services or products advertised herein.

The views, opinions, positions or strategies expressed by the authors and those providing comments are theirs alone, and do not necessarily reflect the views, opinions, positions or strategies of Modelz View, the editor or any other crew member of Modelz View.

Legal Disclaimer:

All materials (including but not limited to the contents, news, information, artwork, text, audio, video or pictures/photographs) IN THIS MAGAZINE OR on Website www.modelzview.com is Copyright © of Modelz View Network, India (MV) and is protected by International copyright law, trademark law, and trade secret law. The Content includes both content owned or controlled by Modelz View and content owned or controlled by third parties and licensed to Modelz View. You may only access and use these materials for personal or educational purposes. Any alteration/modification either in whole or in part or usage of the materials for other than educational and personal purposes violates the copyright laws. You may not under any circumstances, reproduce, record, publish publicly, distribute or publicly exhibit any material without Modelz View's express written consent. Any attempt to "pass off" any of Modelz View's content as your own work shall be violative of the existing copyright laws. You may not use any of Modelz View trademarks or trade names without our consent and you acknowledge that you have no ownership rights in and to any of those names and marks. You agree to notify Modelz View in writing promptly upon becoming aware of any unauthorized access to or use of the Website by any party or of any claim that the Website or any of the contents of the Website infringes any copyright, trade mark, or other contractual, statutory or common law rights of any party. Links of other sites from Modelz View Website: The Modelz View MAG OR Website may contain links to other Websites ("linked sites"). The linked sites are not under the control of Modelz View and Modelz View is not responsible for the contents of any such linked site, including without limitation any link contained in a linked site or any changes or updates to a linked site. These links have been provided to you only as a convenience and the inclusion of any link does not imply endorsement by Modelz View mag /Website or any association with such site(s) or operator(s).

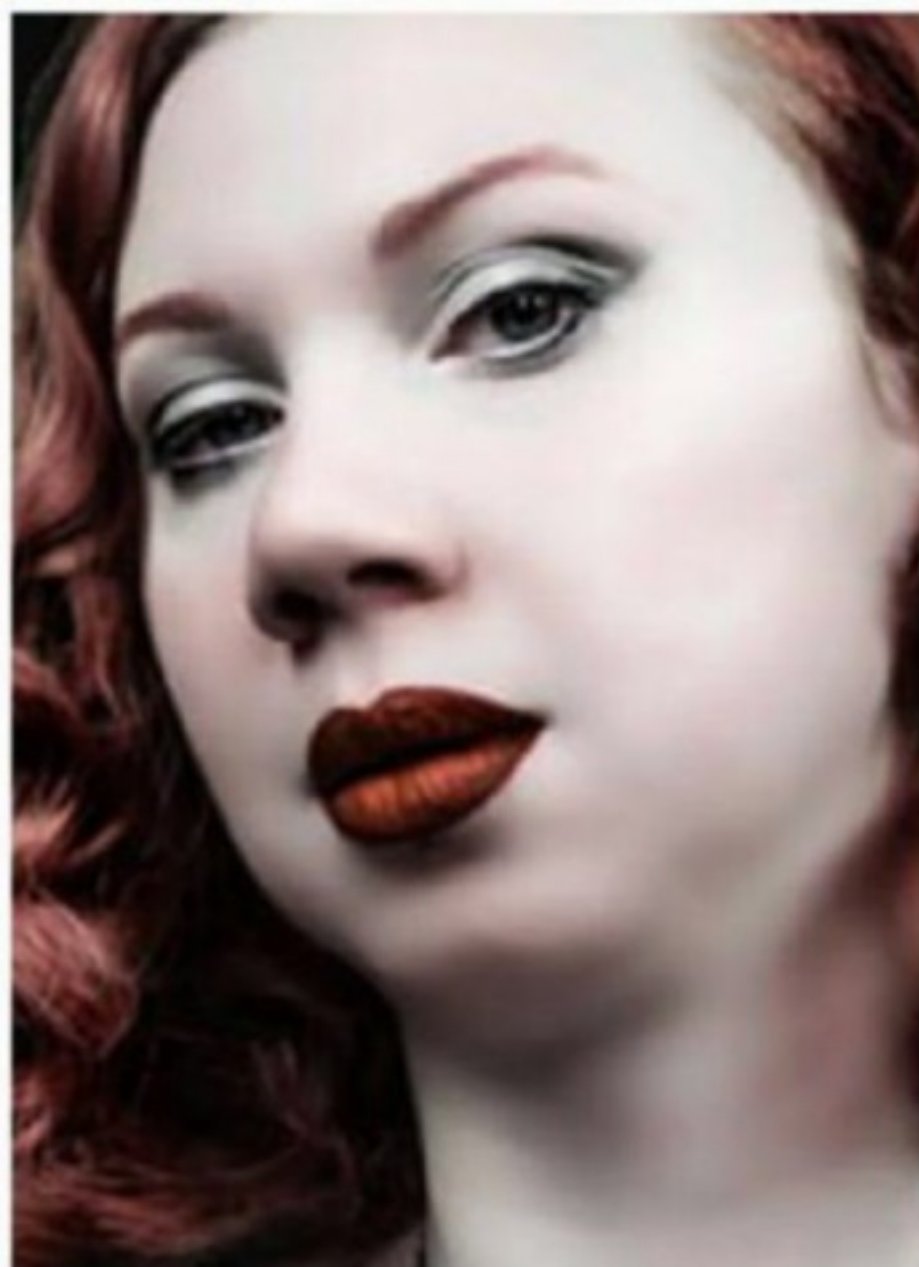
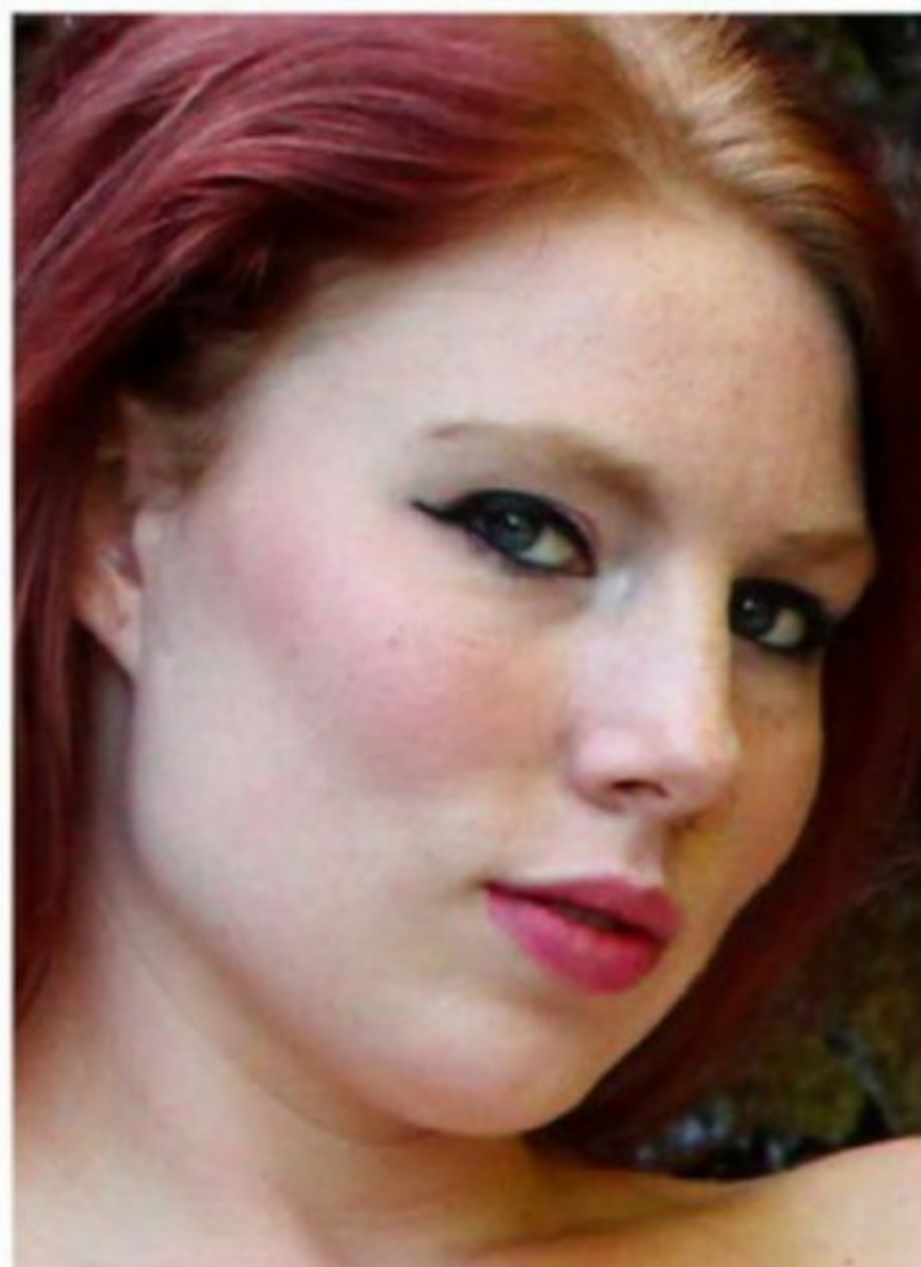
Security & Privacy:

Modelz View is deeply committed to maintaining your privacy. We value our readers/visitors greatly and we collect information in order to optimize our services and better serve your buying needs.

Confidentiality:

We do not share with others any personal information that you provide to us through our Website. By reading this mag / Usage of the Website www.modelzview.com means you accept its terms

in this issue



MODELZ VIEW
aqstra
SHOT

JOJO
CURREY



PHOTOGRAPHY R.E. WALKER



PHOTOGRAPHY R.E.WALKER



WE
LOVE
TO HEAR FROM YOU
SEND YOUR VALUABLE
FEEDBACK
to info@modelzview.com
JOIN US ON [f](#) [t](#) [i](#) [i](#) [s](#) /MODELZVIEW

MARIA
ELAINA







WE
LOVE
TO HEAR FROM YOU
SEND YOUR VALUABLE
FEEDBACK
to info@modelzview.com
JOIN US ON [f](#) [t](#) [i](#) [g](#) /MODELZVIEW

JOIN US ON [f](#) [t](#) [i](#) [g](#) /MODELZVIEW

WWW.MODELZVIEW.COM **AQSTRASHOT** ARTIST BY

SCARLETT MARIE







WE
LOVE
TO HEAR FROM YOU
SEND YOUR VALUABLE
FEEDBACK
to info@modelzview.com
JOIN US ON [f](#) [t](#) [i](#) [g](#) /MODELZVIEW

STEPH SIMPSON







WE
LOVE
TO HEAR FROM YOU
SEND YOUR VALUABLE
FEEDBACK
to info@modelzview.com
JOIN US ON [f](#) [t](#) [i](#) [g](#) /MODELZVIEW



A photograph of a person's leg and foot, wearing a black sandal, positioned against a background of vertical wooden slats. The leg is bent at the knee, and the foot is visible. The lighting is warm, creating a soft glow on the skin and the wood.

VICTORIA SMYTH





WE
LOVE
TO HEAR FROM YOU
SEND YOUR VALUABLE
FEEDBACK
to info@modelzview.com
JOIN US ON [f](#) [t](#) [i](#) [i](#) [/MODELZVIEW](#)

JOIN US ON [f](#) [t](#) [i](#) [i](#) [/MODELZVIEW](#)

WWW.MODELZVIEW.COM **AQSTRASHOT** ONLY ONE

CHRISSY







WE
LOVE
TO HEAR FROM YOU
SEND YOUR VALUABLE
FEEDBACK
to info@modelzview.com
JOIN US ON [f](#) [t](#) [i](#) [g](#) /MODELZVIEW



POLLY CRAIG





WE
LOVE
TO HEAR FROM YOU
SEND YOUR VALUABLE
FEEDBACK
to info@modelzview.com
JOIN US ON [f](#) [t](#) [i](#) [i](#) /MODELZVIEW

check also



ONLY ON

WWW.MODELZVIEW.COM/MAGAZINE