

# CLIENTELE LUXURY GLOBAL

**Well Designed Homes**  
*All Luxury - For Sale*

**On The Cover**

Wolf Lodge Northern Norway  
Arctic Nature Up Close

**In This Issue:**

*Famous Homes for Sale*

*Industry Men- Profiles*

*All New Rolls- Royce Release*

*South Iceland Travel*

WINTER 2019

\$6.99 US

94>



7 25274 29575 3





THE  
**Malibu Life**  
TEAM

704 N Arden Drive  
Beverly Hills  
**\$17,250,000**

"Legendary Spanish  
Revival by Wallace Neff"  
6 Bed | 9 Bath  
9,790 Sq Ft | 17,622 Lt Sz

Get the full details:  
@704North.Arden  
704NorthArden.com

. . . .  
. . . .  
. . . .



27120 Sea Vista Drive  
Malibu  
**\$5,880,000**

"Sophisticated Beachy  
Oasis"  
3 Bed | 3 Bath  
2,898 Sq Ft | 30,324 Lt Sz

Get the full details:  
@Sea.Vista  
27120SeaVista.com



**Madison Hildebrand | Jennifer Chrisman**  
310.818.5788 | Team@TheMalibuLife.com | TheMalibuLife.com

**COMPASS**

Compass is the brand name used for services provided by one or more of the Compass group of subsidiary companies. Compass is a real estate broker licensed by the State of California and abides by Equal Housing Opportunity laws. License Number 01866771. All material presented herein is intended for informational purposes only and is compiled from sources deemed reliable but has not been verified. Changes in price, condition, sale or withdrawal may be made without notice. No statement is made as to accuracy of any description. All measurements and square footage are approximate. Hildebrand DRE 01413280 | Chrisman DRE 01325526.



# The view is always better at the top.

Whether it's at the top of the Aspen real estate market or at the top of Tiehack at 6:47 am on a Tuesday in January.



LEFT TO RIGHT: 301 LAKE AVENUE \$26,900,000; SUMMIT HOUSE \$39,500,000; STAR VIEW LOT 4 \$11,950,000

For those seeking the top, I represent the finest in Aspen real estate.

Only

Aspen  
Snowmass

**Sotheby's**  
INTERNATIONAL REALTY

For information contact:

**Craig Morris**  
970.379.9795  
Craig.Morris@sir.com  
CraigMorris.com





# CLIENTELE

## LUXURY

GLOBAL



6	<b>Rolls-Royce News</b> Black Badge Cullinan
8	<b>Private Escape - Winter</b> Eldar Lodge, South Iceland
10	<b>Must Have Items</b> Go With Color - Hot Picks
14	<b>Travel New Year Bucket List</b> Places to Visit in 2020
28	<b>Waterfront Retreat - For Sale</b> CAMANO ISLAND
30	<b>On The Market- Real Estate</b> 5 Famous Homes for Sale
36	<b>Designer Ski Homes</b> Powder Mountain
42	<b>Industry Men 2020</b> Men Who Thrive In their Industry
46	<b>DESIRE</b> Well Designed Homes- For Sale
74	<b>Luxury Real Estate</b> Multi-Million Dollar Property for Sale Around the USA
86	<b>Last Look</b> Chalet Zermatt Peak



Publisher: Clientele Luxury, LLC  
Managing Editor In Chief: Erin Green  
Executive Editor: Irene Test  
Art & Production Director: Alexa Macdonald  
Design Manager: Alexa Macdonald  
Online Managing Director: Renee Easley  
Cover Photo Credit: Thomas Eckhof,  
Presented by Lauren Berger Collection

### Clientele Luxury

ClienteleLuxury.com

Contact: [info@ClienteleLuxury.com](mailto:info@ClienteleLuxury.com) | 1-800-209-5275

Follow us on Instagram/ Twitter/ Facebook @clienteleluxury

To Advertise or Subscribe: 727-277-3862

All images and material in the Clientele Luxury publication may not be reproduced in any form unless written permission from our Publisher has been granted. Any solicitation to our Clients in this magazine is strictly prohibited. All real estate properties featured and advertised in this publication are subject to price change or withdrawal at any time. Clientele Luxury LLC takes no legal responsibility for accuracy but believes information to be correct at the time of press.



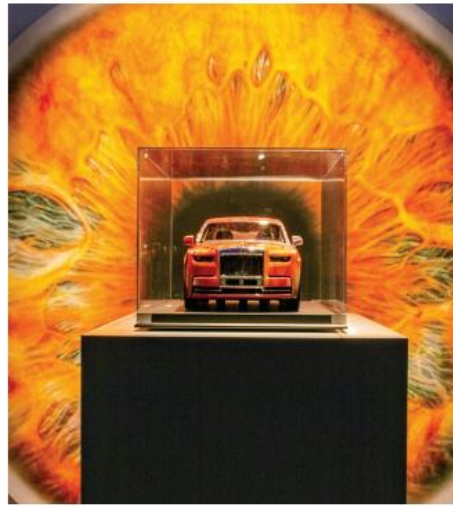
# Rolls - Royce Iconic Event

Location: Goodwood, home of Rolls-Royce in Chichester England

Amount Raised: GBP 1.7 million \$2.00 million.



Evelina London fundraiser Kate Storey



Artists Refik Anadol & Efsun Erkilic



Rolls-Royce Chief Executive Torsten Müller-Ötvös & artist Jonathan Huxley

A major philanthropic event raised in excess of £1.7 million at the Home of Rolls-Royce in Goodwood, West Sussex, on Saturday 21st September 2019. Rolls-Royce's Evelina Art for Allergy x Dine on the Line was held in support of allergy research at Evelina London Children's Hospital.

The star of the show was undoubtedly a Phantom, a collaboration between Rolls-Royce Motor Cars and world-renowned artist Marc Quinn. The winning bidder of this headline lot is a valued collector of the marque. Marc Quinn will now create a bespoke artwork featuring the iris of the winning bidder's daughter, using Rolls-Royce Phantom as his canvas.

The evening of art, automotive and culinary experiences began

with a cocktail reception, where British artist Jonathan Huxley created a new artwork, live at the event. In addition, LA-based media artist Refik Anadol, commissioned for the Rolls-Royce Art Programme, treated guests to an exclusive preview of his new work entitled Art of Perfection: Data Painting. Anadol's unique work of digital art used data sets relating to the colour of every Rolls-Royce motor car created at the Home of Rolls-Royce over the last ten years.

Following the auction, singer-songwriter John Newman entertained guests, before DJ Fat Tony closed out an extraordinary evening of philanthropy.



Wol Kolade Chair St Thomas's & Guys Charity



Singer songwriter John Newman



Artist Marc Quinn & auctioneer Simon de Pury



# Black Badge Cullinan

Rolls-Royce Motor Cars recently unveiled the latest member of the Black Badge permanent Bespoke Family, Black Badge Cullinan. Introduced in March of 2016 to tremendous reception, today one-in-five Rolls-Royce commissions is done as Black Badge with a darker image that defines the taste of a younger generation of luxury consumer.

This Rolls-Royce alter ego is marked with the mathematical symbol representing a potential infinity placed discreetly throughout the motor car. This marking was first applied to Sir Malcolm Campbell's record-breaking Rolls-Royce-powered Blue Bird K3 hydroplane. The darkened Spirit of Ecstasy mascot is presented in high gloss black chrome and the iconic Rolls-Royce badges invert to become silver-on-black. Black Badge Cullinan wears all-new 22-inch forged alloy wheels, reserved exclusively for Black Badge Cullinan. The 22-wheels accompanied by another first for Rolls-Royce with the marque's first ever colored brake caliper. The high gloss Red paint offsets the new dark wheels.

Color and Trim designers created a bold new leather color, Forge Yellow, to offer as part of the brand's curated collection. Black Badge is far more than an aesthetic treatment. Key to the thrill of Black Badge Cullinan is the Architecture of Luxury, Rolls-Royce's proprietary all-aluminum architecture. The sub-structure delivers extraordinary body stiffness and is fitted with all-wheel drive and four-wheel steering. Black Badge Cullinan is now available to commission. ■







# Your Real Estate Expert

Let me help you find your place in the world.

25+

Years real estate  
experience

\$1B+

In sales



**Shelly Tretter Lynch**

Licensed Real Estate Salesperson

203.550.8508

shelly.tretterlynch@compass.com

@shellytretterlynch

**compass.com**

COMPASS

SHELLY TRETTER LYNCH IS A REAL ESTATE LICENSEE AFFILIATED WITH COMPASS CONNECTICUT, LLC, A LICENSED REAL ESTATE BROKER AND ABIDES BY EQUAL HOUSING OPPORTUNITY LAWS. Compass Connecticut, LLC is a licensed real estate broker and abides by Equal Housing Opportunity laws. All material presented herein is intended for informational purposes only. Information is compiled from sources deemed reliable but is subject to errors, omissions, changes in price, condition, sale, or withdrawal without notice. No statement is made as to the accuracy of any description. All measurements and square footages are approximate. This is not intended to solicit property already listed. Nothing herein shall be construed as legal, accounting or other professional advice outside the realm of real estate brokerage.



# WINTER *ESCAPE*

**Eldar Lodge is a private estate in South Iceland,** hidden away in the low-rise woodlands. Designed for enjoying the wonderful Icelandic landscape in privacy, this luxury lodge is located on an exclusive reserve with sublime views of the surrounding countryside.

The lodge is hidden in the beautiful Iceland countryside, catered to guests who demand the highest standard of luxury and exclusivity. The lodge affords its guests a unique opportunity for seclusion and comfort. It is not accessible to general tourists and has been used by celebrities all over the world. The lodge is exclusively reserved for one travel party at a time.

Eldar Lodge includes six suites with private furnished terraces and simple, yet elegant en-suite bathrooms.

The lodge has some notably exciting features such as a helipad, a hot tub and spa facilities. Your stay will be complimented by the use of your very own chef and host, and the lodge is perfectly situated away from the hustle and bustle of urban life for a chance to view the Northern Lights and to undertake excursions to see the awesome geysers of the region. ■



Photo Credit: Ozzo Photography | [www.ozzo.is](http://www.ozzo.is)

To book this property contact The Lauren Berger Collection | [laurenbergercollection.com](http://laurenbergercollection.com)





# TERRY HUNZIKER-DESIGNED PACIFIC NORTHWEST WATERFRONT RETREAT \$1,795,000



AT TOP: Camano Island, Washington Puget Sound Waterfront Compound \$1,795,000

BELOW, LEFT-TO-RIGHT: West Seattle Puget Sound Waterfront Residence \$4,700,000

Seattle Lake Washington Waterfront Estate \$5,495,000

Downtown Seattle Penthouse \$4,995,000

MOIRA E. HOLLEY

MOIRA@MOIRAPRESENTS.COM

206.660.4787

MOIRAPRESENTS.COM

CO-FOUNDER AND GLOBAL SALES ADVISOR



Realogics | Sotheby's  
INTERNATIONAL REALTY

Each Office is Independently Owned and Operated.

REPRESENTING SELLERS AND BUYERS OF DISTINCTIVE HOMES AND RESIDENCES.



# Go With COLOR



## **Buccellati Macri 24mm 18-Karat Gold, Opal, and Diamond Watch**

Why is it high-dollar watches seem so masculine and uniform? Buccellati shakes that up with its Macri – a masterpiece of artisanal craftsmanship. On a bangle-style cuff, 18-karat gold creates a glimmering, radiant foundation that grabs attention. Up close, you'll notice all the details, like Rigato etching, diamond-encrusted accents, and a brilliant, multicolored opal dial. Features Swiss-crafted quartz movement.

## **Gucci 45mm Stainless Steel Striped Nylon Dive Watch**

Take your timepiece's style to new depths. Subtly branded considering Gucci's latest offerings, this diving-inspired watch keeps the face large and stark, complete with a black dial, contrasting markings, and a rotating bezel on a solid stainless steel case. A contrasting two-tone striped strap gives it a pop of color and hints at Gucci's standard motifs while offering the strength of nylon. Made for the everyday adventurer, with 200m water resistance, reliable quartz movement, and a sturdy buckle closure.



## **Prada Appliquéd Floral-Print Cotton-Sateen Gown**

You can be festive this season without solely relying on red and green. Sourced from the runway, this dress from Prada's FW19 collection alludes to the mysterious, gothic character of Mary Shelley's Frankenstein, yet it's far from macabre, with a pleated skirt, contrast-heavy all-over floral print, and three-dimensional appliquéd flowers. Feel around the skirt, and you'll come across convenient yet moderately concealed pockets.



## **Suzanne Kalan 18-Karat Rose Gold Eternity Ring**

Eternity bands, whether for engagement rings or style jewelry, have seen an uptick this past year. Steering away from predictable pavé settings, Suzanne Kalan takes a bold, pink-hued approach with this textured band. Rose gold gives it a warm base, angled, unevenly spaced baguette rubies have a rustically individualistic character, and small white diamonds throughout coolly contrast against its blush-toned brilliance.

## **Betsy Mid-Century Modern Sofa**

While certain vintage trends ought to stay in the past (see shag carpets), interior designers have started embracing the simplicity, straightforwardness, and slight space agey-ness of the 1950s and '60s. This Betsy sofa balances such retro appeal with modern luxury. Here, precise, angular lines give shape to the velvet texture, and antique brass pops against deep teal.







# WHISPERING WOODS

6628 Shoal Creek subdivision  
in Plano, Texas.

Beautiful custom home on one of the largest lots in Shoal Creek overlooking creek and heavily treed greenbelt. Great for entertaining with its open concept, wet bars, 400 plus bottle temp controlled wine room and outdoor kitchen. Enjoy the gorgeous views out expansive windows from many rooms, large covered stamped concrete patio with wood burning fireplace, second floor balcony and martini pool and spa. Other amenities include upstairs playroom, TV room with wet bar, chef's kitchen with sitting area, three fireplaces, large interior storage closet, many custom extras and all 5 bedrooms are ensuite. This beauty has it all! Offered at \$1,299,000.



**Vicki White**  
Team

214-534-1305  
vwhite@briggsfreeman.com  
vickiwhitehomes.com

Briggs  
Freeman | Sotheby's  
INTERNATIONAL REALTY





## NEW YEAR MUST-HAVE ACCESSORIES



### Usisi Daryl Buttoned Midi Dress

Too many shirt dresses, frankly, look like a button-front extended a few inches. This style from Usisi ups both the length and elegance factor. The straight-hemmed silhouette falls to the knee – making it office appropriate – and a fine viscose/linen blends flows as you move. Details add to the polished yet casual character, from a spread camp-style collar framing a V-neck, full buttoned front, and a distinctive belted waist.



### Tom Ford Edgar Leather Chelsea Boots

Every man needs a quality Chelsea boot for its blend of classic simplicity and effortless style. Tom Ford stays deceptively straightforward with this silhouette, complementing the mid-height with a stitched cap toe and hand-polished finish. Made in Italy.



### Jennifer Behr Botticelli Shell Hair Clip

Allusion to the famous Botticelli painting gives this stylized and audacious hair clip an artful angle. Get taken away – and elevate your locks – with its radiant, otherworldly gold-tone double-shell motif. Clusters of pearls emerge from the center, with their perfectly smooth, spherical shapes contrasting against the ridged texture.



### Boucheron 18-Karat Yellow Gold Jack de Boucheron Wrap Bracelet

This past year, yellow gold made a grand return, offering the right mix of brilliance and classic versatility. Boucheron captures that with this bracelet, featuring a single wrap design with a visible cord texture and a large clasp. It's all statement appeal without the set and noise of bangles.



### Brunello Cucinelli Monili Bead Square Toe Booties

No wardrobe is complete without a pair of booties, but many styles often look blocky once you slip them on. Master of knitwear Brunello Cucinelli opts for a more streamlined approach, with a thinner square toe and narrower heel that doesn't tip fully into stiletto territory. The polished calfskin, with a light, versatile shine and texture, then gets upgraded with subtle monili beading along the exterior.





## North Georgia Luxury Estate Living



**6749 STRINGER ROAD | CLERMONT, GA 30527 | 123<sup>±</sup> ACRES | \$5,250,000**

Nestled in the foothills of North Georgia, this private mountain property includes incredible views of Wauka Mountain and Long Mountain. This estate boasts all you need for a private getaway or all-inclusive retreat center. Over 123<sup>±</sup> acres of land including approximately 80<sup>±</sup> acres of pasture, two stocked ponds, stadium-sized riding arena, and a sports area with a pool, gym and tennis court. The main lodge with the attached guest quarters can accommodate up to 50 guests and features over 8,000 square feet of living space designed to make you feel right at home. Immerse yourself in the majestic beauty of the outdoors at Montara Farm. **Reflect. Recharge. Renew. Montara Farm has it all!**



**5515 MOUNT VERNON ROAD | MURRAYVILLE, GA 30564 | 52<sup>±</sup> ACRES | \$1,450,000**

This extraordinary and unique property is situated on 52<sup>±</sup> acres in the highly sought-after North Hall. The moment you drive up the paved and tree-lined entrance with picturesque views of the 2.5<sup>±</sup> acre pond you will know this is special! The Craftsman-style brick home which overlooks the pond has four bedrooms, four baths, upper loft with office, finished terrace level with gym and an in-law suite. The property also features an in-ground pool plus two streams that run through the rear boundary of the farm which has a second building site. The home has 1,500 square feet on the upper level for future build-out. The country seclusion in desirable North Hall is perfect for a second home or family estate.



**JUDI RENFROE**  
EMERITUS | EQUESTRIAN ESTATE &  
LUXURY COLLECTION SPECIALIST

D: 404.550.5644


O: 770.475.0505

Judi.Renfroe@BHHSGeorgia.com

JudiRenfroe.com

NORTH FULTON OFFICE | 33 SOUTH MAIN STREET | SUITE 201 | ALPHARETTA, GEORGIA 30009



BERKSHIRE HATHAWAY HOMESERVICES GEORGIA PROPERTIES ©2019 An independently operated subsidiary of HomeServices of America, Inc., a Berkshire Hathaway affiliate, and a franchisee of BHH Affiliates, LLC. Berkshire Hathaway HomeServices and the Berkshire Hathaway HomeServices symbol are registered service marks of HomeServices of America, Inc.\* Berkshire Hathaway HomeServices does not endorse any of the products or vendors referenced on this material. Any mention of vendors, products, or services is for informational purposes only. Information is deemed accurate but subject to change without notice. If your property is currently listed with a Realtor®, please disregard this notice. It is not our intention to solicit the offerings of other Brokers. Equal Housing Opportunity. 



# NEW YEAR BUCKET LIST

## Places to Visit in 2020

With a gradual opening that started in November 2014, the Sunrise Kempinski Hotel in Beijing is one of the company's largest developments in China, consisting of 14 hotels along the lakeshore and on Yanqi Island, plus a conference center, 14 restaurants and bars, spas, a private marina, and a nine-story pagoda.

The hotel itself, located at the foot of the Yan Mountains and not far from attractions like the Mutianyu Great Wall and Qinglong Gorge, features 306 guest rooms and suites spread over 21 floors. In working with 60 designers from across the globe, Chief Designer Zhang Hai Ao and his team from Shanghai Huadu Architect Design Company came up with what's described as an "oriental sunrise" concept. For one, it symbolizes China's forward-moving economy, but secondly, it further represents its integration with the surroundings.

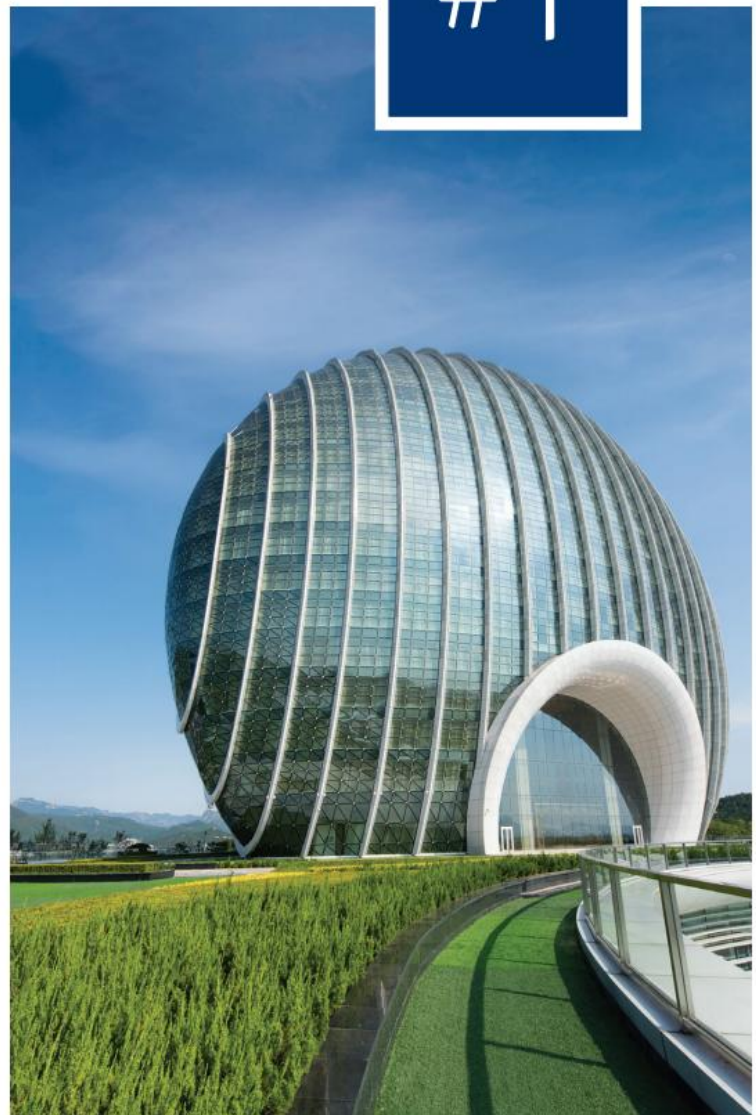
In the works for two years, the Sunrise Kempinski Hotel materialized as a mixed-structure system incorporating concrete-filled tubular columns connected with steel beams and utilizing a concrete core. The design, additionally, integrates green technology that makes use of the nearby landscape. For instance, a fully glass exterior allows each floor to get 25-percent more light; at the same time, low-E glazing on the glass ensures a comfortable temperature in all spaces. Photovoltaic panels further power the facility.

Tying this and the "Oriental Sunrise" together are the architectural aspects. As the building's top reflects the sky's color, the middle turns toward the Yan Mountains, while the bottom mirrors the nearby lake.

Already, likely because of its proximity to various activities and attractions, the hotel is turning into a travel destination. Capitalizing on it, its owners are now seeking out partnerships to offer helicopter, e-yacht, and hot air balloon services to guests. ■

BEIJING

#1





#2

## CAPTIVA ISLAND



Many think of Captiva Island solely as a vacation destination, but this community thought to capture classic Florida essence is home to multiple wildlife sanctuaries and a diverse group of adults who live here year-round.

Subtropical conditions throughout all 12 months make Captiva one of the most sought-after and exclusive places along the Gulf, likely as a result of its miles of white sandy beaches and a stuck-in-time feel. Here, homes run about \$500,000 on average, catering to anyone from the rich and famous to families to retirees and middle-age professionals. And, likely as a result of ordinances restricting development, including buildings no taller than three stories and no chain restaurants, those who stay here throughout the year have formed a tight bond. But, this atmosphere attracts well-informed travelers looking to get away for a weekend to a few weeks, and for those passing through, the South Seas Island Resort – on what used to be a key lime plantation and surrounded by a 330-acre wildlife preserve – is the place to be.

Yet, for a longer and more authentic stay, the Resort Vacation Homes, a collection of villas and cottages spread out over the property,

let you create your own private retreat – essentially, the feeling of home with the proximity to the island's attractions. And, as part of South Seas' mission of accommodating all guests, the homes offer anywhere from two to nine bedrooms, with your own pool or even the beach just steps away. But, you're there to wind down, relax, and get away from it all, and here's where South Seas excels. Its grounds ultimately give you the opportunity to customize your own vacation experience.

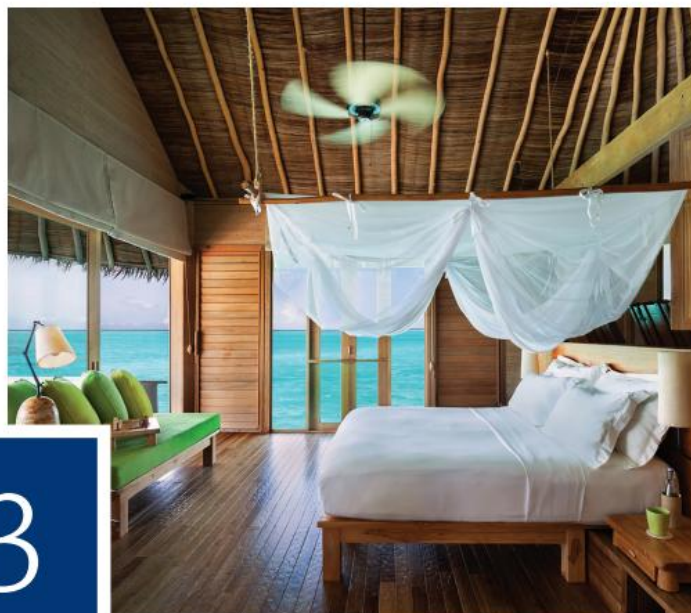
When you're not lounging by the pool or walking along the beach world-famous for its shelling, take advantage of its nine-hole golf course, one of the world's "Top Short Courses"; the tennis court and sailing school; waters for sailing, kayaking, and boating; and two marinas, both complete with a dock, launch, rentals, and all services and amenities for you and your crew. Afterwards, when it's time to dine, the same choose-your-own path applies. Restaurants, here, emphasize fresh seafood and changing seasonal menus, but from a grocery store and sandwiches to hand-tossed pizza and even an old-fashioned malt shop, there's a place for every taste and occasion. ■

## LAAMU

Six Senses Laamu is the only resort in the Laamu Atoll, deep in the Indian Ocean. Just an inter-island plane trip from Malé International Airport and a short boat ride brings you to a place where dolphins swim. The luxury Maldives resort is a combination of on-land and over-water villas constructed of sustainable materials and set around the palm-fringed paradise. photo credit Six Senses.

[www.sixsenses.com/resorts/laamu/destination](http://www.sixsenses.com/resorts/laamu/destination) ■

#3





#4

SAXON



Located in the tranquil, tree-lined suburb of Sandhurst, within minutes of Johannesburg's world-class shopping and business hub, the Saxon Hotel, Villas & Spa is an all-luxury, 53-suite hotel.

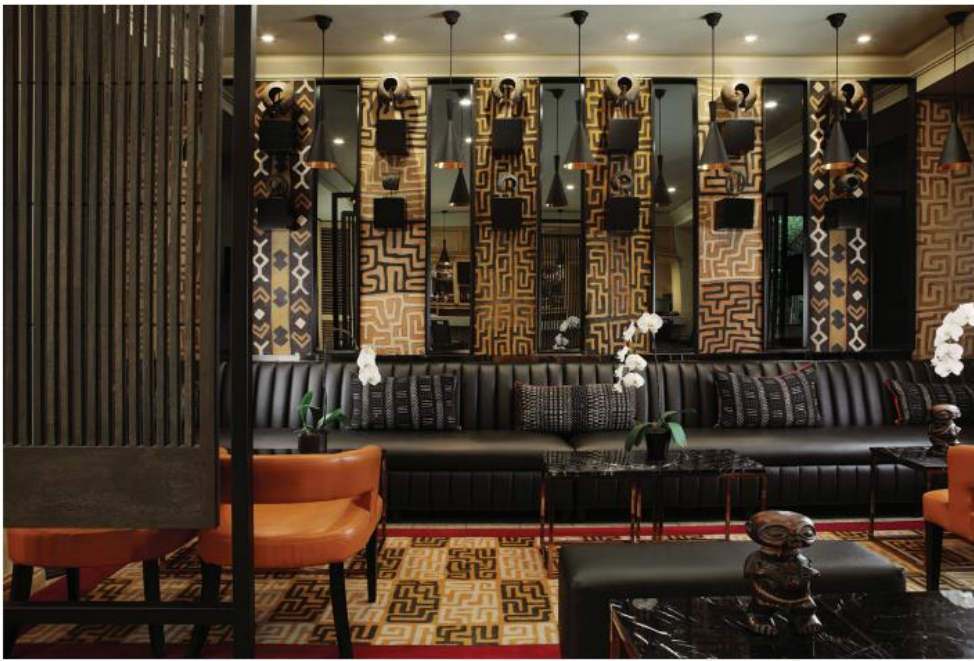
Many discerning travelers, including royalty, statesmen, Nobel prize-winners and best-selling authors, have returned time and again to experience the unequalled qualities for which the Saxon has gained worldwide renown. In the hotel's restaurants, top-notch chefs create personalized cuisine, complimented by an outstanding selection of wines from around the world. Additionally, the Saxon boasts multiple pools, a private library, and a cigar and piano lounge.

Completing the luxurious amenities of Saxon is the Saxon Spa, which consists of eight treatment rooms, a Turkish Hammam, a steam room, Rasul chamber, spa café,

and hair studio, as well as a modern gym. Treatments at the spa include sound therapy, a Himalayan salt signature journey, and a Rasul spa ritual, amongst others.

In addition to its many offerings, the Saxon also has deep historical ties. The Saxon, with its serene surroundings, is where Nelson Mandela chose to edit his best-selling autobiography, *Long Walk to Freedom*. The Nelson Mandela Platinum Suite was once occupied by Mandela during his six-month stay at the property and is a fitting tribute to Madiba, as designer Dean Simon used Mandela's heritage to inspire the design of the suite. The suite features bespoke pieces of art and furniture with an authentically African look and feel that takes guests on a journey through Mandela's life, from his days as a young militant through his years as a wisely statesman. ■





### SIDE NOTE:

The Nelson Mandela Platinum Suite was once occupied by Mandela during his six-month stay at the property and is a fitting tribute to Madiba, as designer Dean Simon used Mandela's heritage to inspire the design of the suite.





## ST. MORITZ

A trip to St. Moritz, one the most well-known, renowned ski resort towns the world, wouldn't be complete without a stay at the Carlton Hotel St. Moritz. Open only four months of the year, the Carlton is an exclusive all suite hotel featuring 60 lake-facing suites, a 4,155 square foot Carlton Penthouse that includes 360-degree views, five terraces and a private elevator, Michelin-starred restaurant Da Vittorio, and the 12,917 square foot Carlton Spa. During their stay in St. Moritz, travelers can enjoy traditional winter sports or take advantage of a variety of unique winter experiences, such as snow kiting over the frozen Lake Silvaplana, bob-sleighbing along the professional ice track in St. Moritz, skiing with a professional, going on a sleigh ride through the picturesque Val Roseg valley, and booking the hotel's very own Outdoor Butler – a truly tailored experience that provides guests with their own private butler to take them exploring around town for the day. After spending the day out and about, guests can enjoy an après-ski drink at the Carlton Bar and Sun Terrace, which overlooks Lake St. Moritz and provides some of the best views. ■

#5





# REVOLUTION HOTEL, BOSTON

## #6

At the Revolution Hotel in Boston, guests are welcomed at reception, where a wall of repurposed mailboxes next to the front desk pays homage to the building's heritage and the fact Boston was home to the nation's first post office. Custom built by Boston's Erik Rueda Design Lab, the ornate brass fronts of the mailboxes were salvaged from the building where they were in use at the YWCA for over 60 years. A sweet coffee shop is close to the reception area.

Visitors are surrounded by art and objects that cleverly display Boston's wide range of innovations from human rights to science, business, culture and technology.

World-renowned street artist Tristan Eaton was selected to create a site-specific foyer mural inspired by the stately paintings found in local institutional buildings like the Boston Public Library.

The mural illustrates Boston's heritage in revolutionary thought, incorporating innovative products like the Polaroid camera, typewriter, and smiley face and cultural icons such as Samuel Adams, Benjamin Franklin, John F. Kennedy, and Martin Luther King, Jr.

Inside the well-designed rooms, you will find that most are compact by design, but all guestrooms come equipped with plush



Photo Credit: Provenance Hotels

beds, super-fast Wi-Fi, an in-room safe, charging stations, TV, telephone, ample storage, and Provenance Signature amenities.

Custom-designed wood and steel furniture takes minimalist inspiration from the building's history as a dormitory, offering smart storage solutions like a luggage cubby and a dedicated gear wall.

Intended to replace the typical closet with a shelf, it features a clothing rod, seat, and drawer, which houses the built-in safe.

In keeping with its mission to upend the status quo, some guestrooms omit in room bathrooms in favor of private, single-occupant bathrooms located at the end of each hallway. Just like residential bathrooms, each of the 10 private shower suites per floor features a toilet, vanity, and glass shower. ■



#7

## WHITE DESERT



Photo Credit: White Desert

Arriving at White Desert Antarctica is like arriving nowhere else on the planet. This luxury lodge sits at the end of the Earth. After the private jet touches down on a blue-ice landing strip, its doors open, and you're hit with sub-zero temperatures. The cold can take your breath away. It's sensory overload and pure white as far as the eye can see.

A six-wheel-drive truck outfitted for the elements arrives to take 12 guests to their home for the week: Whichaway Camp, a cluster of sand-colored pods perched over the rugged terrain. From a distance, the camp looks like Mars or a lunar camp. Inside, fur throws are draped over mid-century modern chairs in a dining room that's straight out of "Game of Thrones."

White Desert is the brainchild of Robyn and her husband, Patrick Woodhead, both polar explorers who sunk their life savings into creating one of the most dramatic – and exclusive – luxury camps on the planet.

White Desert, a luxury adventure company for Antarctica, offers a private jet service to the remote continent from Cape Town, South

## SIDE NOTE:

To book this experience contact [laurenbergercollection.com](http://laurenbergercollection.com)  
Images courtesy of Lauren Berger Collection

Africa. The super-exclusive service, maxing out at 12 guests per trip, has attracted some high-profile guests, such as astronaut Buzz Aldrin, Bear Grylls, and Prince Harry. On each trip, a Gulfstream jet flies guests about 2,400 miles over the southern Atlantic Ocean and lands on a blue-ice runway, where the sun shines for 24 continuous hours. It's the perfect trip for thrill-seekers who want to travel the globe in luxury.

White Desert hosts about 100 visitors a year, giving those lucky few guests a chance to explore neon-blue ice tunnels, get an up-close look at a colony of 6,000 emperor penguins, visit the South Pole, and experience the real Antarctica. ■





#8

## WOLF LODGE



Experience arctic nature up close in northern Norway, as you live among the wolves at the ultra-exclusive Wolf Lodge. Countless stories have been created around these mythical creatures. Now you can be part of a new story.

You will revel in the unique feeling of being watched by curious amber eyes, as the wolves of Polar Park circle the private property, mere inches away. Dedicated animal keepers will even guide you into the enclosure, where you will meet these extraordinary creatures face-to-face, making for a truly unforgettable, life-altering experience.

As the night draws in, relax in luxurious, tranquil surroundings as the sky is illuminated by the midnight sun or the enchanting colors of the Aurora Borealis. Scintillating light dances across the darkened sky from late August until mid-April, and during the summer months, the shimmering sun never slips below the horizon.

Polar Park's wolf visits were established to ensure better welfare for wolves in captivity and to offer you a unique, once-in-a-lifetime experience. Wolves are naturally conditioned to be afraid of humans, and many wolves in captivity, who are not familiar with people, are fearful and live in stressful conditions.

The wolves at Polar Park are accustomed to human contact, and enjoy our company as part of their natural environment.

Polar Park is the most northerly located animal park on the planet. It lies in a beautiful, secluded valley, hidden from the outside world. ■



Photo Credit: Thomas Eckhof

## SIDE NOTE:

To book this  
experience contact  
[laurenbergercollection.com](http://laurenbergercollection.com)  
Images courtesy of Lauren  
Berger Collection



#9



## KIAWAH ISLAND

Located along 10 miles of pristine beach on a barrier island less than 30 miles south of Charleston, S.C., Kiawah Island Golf Resort consistently ranks as one of the country's top resorts. The resort is anchored by The Sanctuary at Kiawah Island Golf Resort, a Forbes Five Star/AAA Five Diamond 255-room luxury hotel and spa.

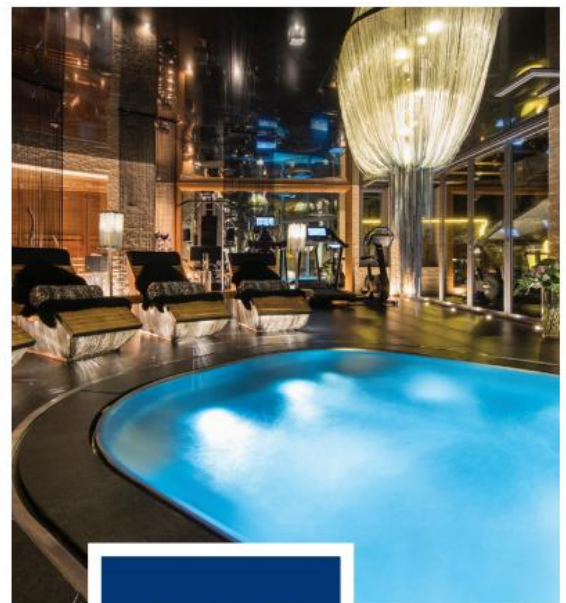
To provide ultimate lodging flexibility for families and groups, the resort also manages nearly 500 private villas and luxury homes offering from one to eight bedrooms. Also on the grounds, five championship golf courses include The Ocean Course, host of the 1991 Ryder Cup (the famous "War by the Shore"); the 2012 PGA Championship; and the upcoming 2021 PGA Championship.

For 11 of the past 13 years, TennisResortsOnline.com has ranked the resort number-one in the world. Additionally, the resort offers acclaimed recreation opportunities with outdoors and nature programs suited to all ages, interests, and activity levels. Kamp Kiawah further offers a range of age-appropriate opportunities, from arts-and-crafts to an immersive junior naturalist program.

With more than a dozen distinctive restaurants ranging from refined white tablecloth multicourse culinary experiences to poolside cantinas. ■







## CHALET ZERMATT PEAK

Chalet Zermatt Peak is an extravagance 5 star unrivaled chalet roosted high over the town of Zermatt, with radiant perspectives disregarding the town and of the notorious Matterhorn.

#10

more 





Midway found, yet totally private, it is only a couple of minutes stroll from the core of the town, with its numerous bars, eateries and boutiques. Set more than six stories, each with floor-to-roof windows, the chalet wires customary high beguile with present day structure and engineering.

Arranged in one of the world's most alluring areas, this is a one of a kind chance to lease an uncommon completely overhauled chalet, with honor winning staff and administration for a mind-blowing occasion. The cutting edge open-plan design flaunts a bigger corner-seating couch under a glass rooftop, library territory with genuine start shooting, situated feasting and open kitchen. The living territories have been broadly inside planned, to incorporate numerous bespoke household items and exceptional curios and fine art.

The library zone offers extra comfortable fireside seating, ideal for evening tea and unwinding in the wake of a difficult day on the inclines. Floor-to-roof windows joined with under floor warming and highlight chimney make a novel warmth in this extravagance living space. The chalet has five exclusively planned room suites, all offering grand twofold beds, seating and dressing zones and stupendous all encompassing perspectives. ■







**SIDE NOTE:**

There is a private extravagance health spa, with indoor/outside Jacuzzi pool, steam-room and sauna.



# LAUREN

---

BERGER COLLECTION



---

Lauren Berger Collection specializes in Bespoke Hospitality, providing unrivaled levels of comfort and service in exclusive properties around the world.

[www.laurenbergercollection.com](http://www.laurenbergercollection.com)



## 117 Audubon Boulevard | Naples, Florida



Magical is the only way to describe this southern plantation style home in Audubon Country Club. Entering the front gate you feel as though you've stepped into a private island retreat. A deep veranda runs the length of the house beckoning you to sit and relax overlooking the pool and fountain. Once inside, beautiful wood floors, custom cabinetry and exquisite lighting create a timeless elegance. This custom home was made for entertaining. The white kitchen has a large island, stainless appliances, an under counter ice maker and pale grey granite. Large French doors open to a 50 ft great room with a view to the preserve and the golf course beyond. The first floor master has 2 large walk in closets and a luxurious bath. Upstairs are two well-appointed en suite bedrooms an office and storage. There is a 3 car, air conditioned garage with voluminous storage and cabinetry. A 2014 build, this beautiful home has impact glass, up to date systems including a 20W generator and needs nothing.



### MARK P. RILEY

LEADER IN THE NAPLES FLORIDA MARKETPLACE

Direct Line: 239-290-4202 or 941-350-2700

Mark@LUXofNaples.com | [www.LuxInternationalProperties.com](http://www.LuxInternationalProperties.com)





### SIDE NOTE:

The unique appeal of Camano Island is that it offers a real-life island experience — without the hype. You will also find intriguing fine art galleries to serve the affluent few who have discovered the Island.



## Waterfront Retreat **CAMANO ISLAND**

**T**his Absolute waterfront retreat was originally designed by world renowned interior designer Terry Hunziker for himself. This splendid West facing waterfront property offers small modern luxury lifestyle, coupled with a 2-bed modernized historic 1924 log cabin nestled among the trees. A long meandering driveway leads you to this one-of-a-kind property, perched at waters-edge on 5 private acres. Featuring 216 ft of water-frontage with stairs to tranquil sandy beach and rock bulkhead. The Property is offered for \$1,795,000 and listed by Moira Holley of Realogics Sotheby's International Realty. [moirapresents.com](http://moirapresents.com) ■





# California Lifestyle Collection



**39 West Shore**  
Belvedere

**\$8,980,000**  
[39WestShore.com](http://39WestShore.com)



**18 Eucalyptus**  
Belvedere

**\$5,875,000**  
[18Eucalyptus.com](http://18Eucalyptus.com)



**11 Acela**  
Tiburon

**\$6,950,000**  
[11Acela.com](http://11Acela.com)



**16450 Aztec Ridge Road**  
Los Gatos

**\$15,950,000**  
[AztecEstateLosGatos.com](http://AztecEstateLosGatos.com)



**75 Margarita**  
San Rafael

**\$6,250,000**  
[75Margarita.com](http://75Margarita.com)



**2820 Scott Street**  
San Francisco

**\$27,500,000**  
[SanFranciscoShowcase2008.com](http://SanFranciscoShowcase2008.com)



**3950 Silverado Trail**  
Calistoga, Napa Valley

**\$4,195,000**  
[CalistogaEstate.com](http://CalistogaEstate.com)



**St. Helena Reserve**  
St. Helena, Napa Valley

**\$21,500,000**  
[StHelenaReserve.com](http://StHelenaReserve.com)



## - FOR SALE FAMOUS HOMES -



*Clientele Luxury features  
5 cozy and lavish homes that are all on the market  
now owned by [Famous People](#), Actors, Comedians,  
NFL, and Hollywood Elite.*





## Modern Cabin Owned by Singer-Songwriter Martin Johnson

### Los Angeles, California

Price Tag \$2,295,000

Entering, you're taken aback by the stunning home with bright and airy living spaces that integrate architecture, design and rustic warmth. The genius placement of high cedar ceilings and walls frame the Swedish kahrs wood flooring, sweeping your senses from city life to mountain living within seconds. The professional kitchen with farm sink, open shelves and Miele appliances, has a cozy custom window seat for relaxing and taking in heart-stopping sunset views. The master bath is purposely designed to frame the HOLLYWOOD sign and features a stand-alone soaking tub, steam shower, custom floating vanities and surround sound speakers. Not to be missed, a few steps down from the master, discover an epic closet space, the future envy of all your friends.

*The property is listed by Patricia Ruben of Sotheby's International Realty.*





## The Norman Lear Estate

### Los Angeles, California

Price Tag \$39,995,000



This masterpiece is an exceptional gated estate sitting on 8.29 acres of impeccable grounds providing expansive ocean, city and canyon views throughout. A beautiful driveway lined with flawless landscape will lead you through the estate encompassing approx 14,000 square foot main house, guesthouse, 35-car garage, executive staff and security offices, pool, spa, gym, and private tennis court. It is evident when walking through the home seeing the beautifully designed formal living and dining rooms, bedrooms, 2 story library, professional screening room and impeccable chefs kitchen that the design and finishes in this estate exemplify unrivaled attention to detail. This home offers privacy, commanding views and upscale living all in one making it a highly coveted compound.

*Property Listed by The Altman Brothers of Douglas Elliman.*





## Property Owned By Rosie O'Donnell Saddle River, New Jersey

Price Tag \$5,995,000

Notable actress, comedian & philanthropist Rosie O'Donnell offers this stunning English Country Estate on over 5.7 manicured acres. The Country Estate was completely renovated and expanded in 2000's with no expense spared. Absolute Prestigious first floor home theater features plush leather seats and custom woodwork.

This stunning property even has a separate full service year round guesthouse. You can't miss the spectacular lagoon pool with grotto waterfalls, huge additional parking area which can also be a sport court. Secure and gated, this estate also features an elevator and 3-car garage plus an artist's studio which can be converted for additional garages. A majestic estate setting with panoramic vistas of the exceptional acreage.

*This property is listed by Vicki Gaily of Special Properties a Division of Brook Hollow Group, Inc. Realtors*





## Harry Warner of Warner Brothers Studio Beverly Hills, California

Price Tag \$32,500,000



The 7 bedroom Historic Harry Warner Estate, located on famed North Rexford Street in Beverly Hills, enjoys good company directly cornered across the street from another legendary property; the original William Randolph Hearst Beverly Hills Estate. Originally built in the 1920's, Harry Warner of Warner Brothers Studio purchased the property in the 30's and reportedly began an extensive restoration under the direction and influence of Architect Paul Williams.

Flash forward to the 21st Century where the current owners added several thousand square feet and restored many of the original and important details of the European Craftsman Tudor. With three coveted gated entry points, due to the double lot and alley access off Woodland Drive, entertaining for Hollywood Elite is an easy feat for the most challenging "Red Carpet" events.

Nestled among mature trees, manicured gardens, guest house and tennis court, there is plenty of room for overnight guests and staff. The 1+ acre lot is tucked well off the main street affording privacy and the opportunity to develop one's own personal Shangri-la!



*This property is listed by Cathleen Shera of Pacific Sotheby's International realty, Joyce Rey and Denise Hamilton both of Coldwell Banker.*





## Property Owned By Famous NFL Coach Calabasas, CA

Price Tag \$3,678,000

Located in The Oaks of Calabasas, formerly owned by an NFL pro-bowler and current NFL coach, this well-appointed and beautiful home features sunset mountain views, an ideal floorplan, an entertainer's backyard complete with pool, spa, gazebo with fireplace, and outdoor cooking area. With a prime end of cul-de-sac location in a celebrity filled neighbor and the uncanny vistas of the Calabasas rolling hills, this estate compound offers peace and seclusion.

*The property is listed by Madison Hildebrand of Compass Real Estate.*



# Designer Ski Homes

## POWDER MOUNTAIN

Located high in Utah's champagne powder-cloaked Wasatch Mountains, lies Powder Mountain, North America's largest ski resort by skiable acreage. Powder Mountain offers a unique skiing experience with capped lift ticket sales to ensure the resort preserves an uncrowded feel and harbors fresh powder long after storms pass.

The resort is also building out a village and mountain community unlike anything else in the ski world. Summit Powder Mountain is the real estate development at Powder Mountain that is redefining what a mountain community looks like with top-of-the-world views at 9,000 feet. Future residents can enter into a truly inspiring intentional

community where alpine adventure and world-leading ideas mix in a rare mountain landscape.

The Overlook is a premier neighborhood for any vista view aficionado, legacy homebuyer and active adventurous family looking for an unmatched mountain retreat.

Homes designed by leading architects such as Studio Ma, JZW Architects, Bicuadro Architects, Olson Kundig, MLSA and Warren Lloyd push the boundaries of mountain architecture forward.

More than 30 miles of hiking and biking trails adjoin the neighborhood, and in the summer fields of wildflowers can be found as far as the eyes can see. ■







VALLEY LUXURY  
PARTNERS  
REAL ESTATE

# Fostering the Art of Living

Time is the most precious commodity. The firm you choose to buy or sell your next estate should have the knowledge and financial resources to attain results. At Valley Luxury Partners, we make that happen. Our background in real estate law, custom home building and sales allows us to deliver a seamless experience so that you can get back to what's important in life.

**We represent discerning buyers and sellers of luxury real estate in select markets in Arizona including Paradise Valley, Arcadia, Biltmore and North Scottsdale. Inquiries and referrals for properties valued over \$1,000,000 USD are welcomed.**

VALLEYLUXURYPARTNERS.COM | 480.734.2455 | INFO@VALLEYLUXURYPARTNERS.COM



©2019 Valley Luxury Partners Real Estate (VLP). All Rights Reserved. RMB Realty LLC dba RMB Luxury is the employing broker of record for VLP. Mission Realty LLC is a general contractor for RMB Luxury. VLP and RMB Realty LLC fully support the principles of the Fair Housing Act. Robert Altshuler is a licensed attorney in Arizona. Nothing in this ad should be construed as legal advice or creating an attorney client relationship.



*Jemez Springs*

16441 NM State Hwy 4

[sothebyshomes.com/0566210](http://sothebyshomes.com/0566210)



Jemez Springs' dramatic terrain is the backdrop for this magnificent property with unobstructed 360 degree views. The upper level of the main residence consists of 1,800 sq. ft. of living space with 2 bedroom and 1 bath. The lower level currently operates a retail store with ADA restroom, additional retail space, pottery room and workshop with loading dock. A second building features 4,450 sq. ft. 2-story, 3 bedroom, and 3 bath.

*Offered at \$1,890,000*



**Vicki Markley**  
[vicki.markley@sothebyshomes.com](mailto:vicki.markley@sothebyshomes.com)  
505.927.3229  
[vickimarkley.com](http://vickimarkley.com)

**Sotheby's**  
INTERNATIONAL REALTY

Santa Fe Brokerage

318 Grant Avenue | Santa Fe, NM | 505.982.6207 | [sothebyshomes.com/santafe](http://sothebyshomes.com/santafe)

Sotheby's International Realty and the Sotheby's International Realty logo are registered (or unregistered) service marks used with permission. Operated by Sotheby's International Realty, Inc. Real estate brokers affiliated with Sotheby's International Realty, Inc. are independent contractor sales associates and are not employees of Sotheby's International Realty, Inc. Equal Housing Opportunity.





SILVERSEA®

NORTHERN EUROPE.  
A DEEPER VIEW OF LEGENDS.

LET US TAKE YOU CLOSER TO THE  
AUTHENTIC BEAUTY OF THE WORLD.

Flåm, Norway, by Steve McCurry



From rolling hills dappled with majestic castles to a medley of Scandinavian architecture, Northern Europe embodies a whimsical landscape. St. Petersburg's Hermitage is every culture enthusiast's dream and Iceland's lava fields astonish the most ardent nature seekers. Sail back into the golden era of Prussian elegance, shuck oysters in Saint-Malo, and gain a better understanding of why Copenhagen is the world's happiest city. #ThisIsSilversea

**FREE ROUNDTRIP ECONOMY AIRFARE** OR BUSINESS CLASS AIRFARE STARTING FROM \$699 EACH WAY  
WHEN YOU BOOK BY NOVEMBER 29, 2019

For more information please contact your travel agent, call 844.382.1359 or visit [silversea.com](http://silversea.com)

Visit [silversea.com/terms-and-conditions](http://silversea.com/terms-and-conditions) for complete Terms and Conditions.





### 373 Relay Road, Aspen, CO

This beautiful Colorado property located at 373 Relay road in West Aspen sold for \$23,000,000. Craig Morris of Aspen Snowmass Sotheby's International Realty represented the Buyer. ■



### 163 Pear Tree Point Road, Darien, CT

This extraordinary 8 Bedroom modern waterfront compound with expansive views of the Long Island Sound recently sold. Nearly every room takes advantage of and uniquely frames panoramic water views. Open lawns and gardens lead to a private dock and swimming pool overlooking the water's edge. This truly unique estate is like no other waterfront offering within such close proximity to Manhattan. Shelly Tretter Lynch of compass was the selling agent. Shelly Tretter Lynch of Compass Real Estate listed and sold the property for \$12,500,000. ■





# Your Premiere Destination



Suntex invites you to visit one of our best-in-class marina properties, whether you want to stay a day, a week, or longer. We are proud of all our coastal marinas, staffed with experienced and attentive teams who will be there to assist you from arrival to departure. Enjoying first-class amenities, you're sure to have a great time, along with a comfortable and stress-free experience.

[suntexcoastal.com/MiamiSuperWeek](http://suntexcoastal.com/MiamiSuperWeek)





## JIM JORDAN

White-Cross Management  
Legendary Photographer



Jim Jordan has lived a life modeled around photography and, through absolute dedication and determination, has risen to icon status. Capturing moments through his lens got him on this path, and Jordan translated that skill into fashion photography. Jordan's work, to date, focuses on many celebrities, Models and other high-powered individuals, and has appeared on many magazine covers.

Discovering he could also spot modeling talent, Jordan started his own agency, White Cross Management. Together, these interests take him around the world, where he continues to capture the beauty through his gifted view and creative imagination. Each Photo-shoot

has a world of its own, and Jordan never disappoints.

White Cross Management has a specific, significant meaning. "White" symbolizes the canvas as a clean start where one can envision anything. Jordan, is now labeled a legendary Hollywood visionary, and someone celebrities depend on, run to, and absolutely salute.

Yet, underneath his brilliant, always excited exterior, he remains humble. Jordan is a role model but also passionately admires the work of Herb Ritts, Helmut Newton, and Peter Lindbergh, and has made these artists' careers an integral part of his life. ■



## CRAIG MORRIS

Luxury Real Estate  
Aspen Snowmass Sotheby's  
International Realty



West Aspen Property sold for \$23,000,000 | Michael Brands/Mountain Home Photo

Craig Morris is a co-owner of Aspen Snowmass Sotheby's International Realty. This powerhouse firm consists of over 200 associates possessing unbeatable expertise and adhering to the highest standards of client service. Locally, they have 11 offices throughout Colorado's Roaring Fork Valley, including in Aspen, Snowmass Village, Basalt, Carbondale, and Glenwood Springs.

Throughout his highly aspirational real estate career, Craig has sold over \$2.2 billion worth of properties. If you look at the sales volume for the entire Roaring Fork Valley, he's been on top for 15 out of the past 16 years.

Yet, Craig's prowess in real estate isn't just local, and in fact, national news outlets have profiled this ultra-luxury real estate market gamechanger on multiple occasions. For a snapshot, the Wall Street Journal/Real Trend Inc's "Top 100 Agents by Sales Volume" ranked him No. 1 in the United States, and he has consistently been a top performer in their annual sales contest. Craig sold \$230 million in 2018 alone.

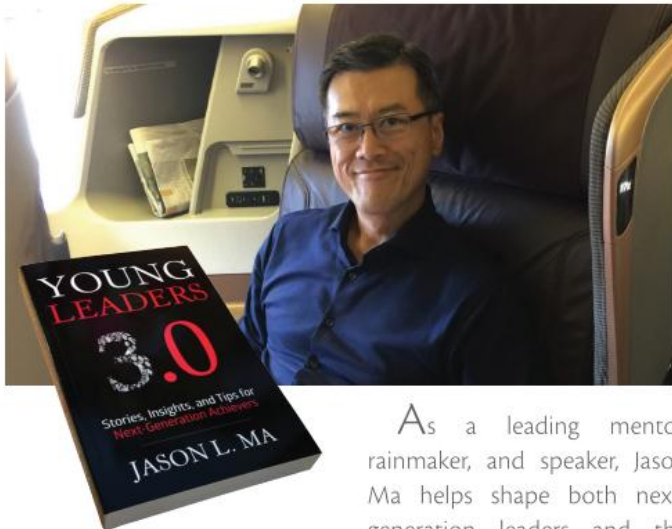
What's behind these figures? Most would say hard work and determination. Craig takes it further with an honest approach, integrity, and professionalism whenever working with clients, and couples that with creative, attention-getting, out-of-the box ideas.

Currently, Craig is a member of the National Association of REALTORS® and previously served as secretary to the Aspen Board of REALTORS®. While his national presence continues to grow, Craig's heart lives in his community. In turn, he volunteers with and supports many nonprofit organizations. Outside of his thriving career, Craig's interests cover many active pursuits, including golf, boating, skiing, hiking, and biking, and most importantly, his family is always at the top of his list. ■



# JASON MA

**Leadership 3.0 Intelligence: Transforming Next-Gen Leaders**  
**CEO & Chief Mentor of ThreeEQ**



As a leading mentor, rainmaker, and speaker, Jason Ma helps shape both next-generation leaders and the G20 private sector. Based in

innovative Silicon Valley, Ma is Founder, CEO, and Chief Mentor of ThreeEQ, a premier global business and education advisory firm that helps clients succeed with pragmatic emotional, social, and leadership intelligence (3EQ).

Ma's perspective is enhanced by 35 years of seasoned, global experience in technology, education, and other industries, and over

2 million miles of world travel through the Americas, Asia Pacific/China, Europe, and Middle East ever since he earned his UC Berkeley engineering degree.

As a father and former tech business executive, Ma noticed that most young people had yet to unleash their full potential. He decided to dedicate his second career to transforming young leaders and preparing them to gain admission to great universities, thrive in impactful, rewarding careers, and cultivate positive, powerful mindsets and soft skills. As a loving college, career, leadership, and life success coach through the years, Ma has privately guided 1-on-1 hundreds of Gen Zers and Millennials to achieve great outcomes with well-being, while being a trusted confidant for parents.

Ma is the acclaimed author of Young Leaders 3.0 and a former Forbes contributor on college admissions, leadership, and entrepreneurship success with over 1 million views.

Ma is a leading member of the B20, the voice of the private sector and an integral part of the G20 process. The B20 recommends policies to the G20 Leaders and governments, representing the global business community. Ma is also a Global Advisory Council member for the World Chinese Economic Summit, Steering Committee member at DC Finance, and charter member of the Family Office Club. For eight years, Ma was a delegate to the Forbes Global CEO Conference. ■

# DENNY CHARED

**DC Finance**  
**High -Net- Worth**  
**Global Events**



Mr. Denny Chared started his career as a financial journalist and as an economist and was one of the first online financial journalists in Israel working for Globes business daily.

In 2003, Mr. Chared founded DC Finance. Since its inception, the firm has grown to produce and raise capital for more than 30 conferences each year attended by thousands of business professionals from Israel and abroad. DC Finance is Israel's leading financial conference organizer reaching high net worth individuals, institutional investors and the top managements of Israel's eminent business community.

DC Finance ([www.dc-finance.com](http://www.dc-finance.com)) builds an international network of high net worth individuals, family offices, and investors for mutual growth and support through first tier events worldwide.

DC Finance is leading financial conferences in the US, UK, Canada and Israel reaching over 1,000 families worldwide who represent over 300 Billion USD. ■





## JOSH ALTMAN

The Altman Brothers | Bravo TV Star | Global Speaker | Luxury Realtor

Josh Altman is one of the most successful real estate agents on the planet, specializing in the luxury housing markets of Bel Air, Beverly Hills, Malibu, and The Hollywood Hills. Josh's clientele consist primarily of A-list celebrities, professional athletes, business leaders, and high net worth individuals from around the globe. Josh and his brother/partner Matt have sold over \$3 billion worth of real estate including dozens of records. At any given time, the Altman Brothers have over 1 billion in active listings.

While many know Josh as a high profile real estate agent, few realize that he had found enormous success as a real estate investor as well. Josh has quietly built a fortune buying and selling

real estate with several of his best residential flips making him millions.

Due to Josh's impeccable track record of success he was offered a starring role on BRAVO TV's Million Dollar listing Los Angeles. He's currently filming season 11. His dynamic personality, humor, contagious energy, and love for the business have made him one of the most sought-after speakers on the global circuit.

Despite his busy schedule, Josh still finds time to give back to his community and is very passionate about volunteering his time and money to support numerous charities and causes. Josh has lived in Los Angeles since 2003 and currently resides in Beverly Hills with his wife Heather and their baby daughter Alexis and son Ace. ■



## TORSTEN MÜLLER-ÖTVÖS

CEO, Rolls-Royce Motor Cars



Since being named Chief Executive of Rolls-Royce Motor Cars in April 2010, Torsten Müller-Ötvös has overseen the brand's expansion, modernization, and image growth on a global level. During his tenure, Rolls-Royce has seen sales increase 400 percent, and the brand's ownership family further experienced a degree of rejuvenation. Going back to Rolls-Royce's roots, Müller-Ötvös helped establish the company as both a top-tier luxury motorcar maker and one of the world's preeminent, bespoke luxury brands.

In overseeing Rolls-Royce's growth, Müller-Ötvös worked to vary the product line and expand its global market presence. As such, additional models joined the Rolls-Royce Phantom, and the brand's visibility spread to consumers in China, Eastern Europe, and Asia. At the same time, Müller-Ötvös didn't ignore Rolls-Royce's stronger markets, and in turn helped improve sales across American, European, and Middle Eastern sectors.

However, Müller-Ötvös isn't the type of executive who makes decisions from afar. Instead, he prioritizes close relationships with his clientele and, in fact, travels to different countries and cultures to ensure customers receive top-level, personalized service.

When asked about his most memorable business experience, Müller-Ötvös comments, "When I became Chief Executive of Rolls-Royce, to be at the forefront of the world's leading luxury brand is a privilege, and one I don't take lightly."

Ending our interview, he mentions, "Rolls-Royce is unique in that almost every handcrafted motorcar that leaves the Home of Rolls-Royce in Goodwood, England, is bespoke. Behind each of these exquisite commissions stands a team of outstanding designers, engineers, and craftspeople working together to create the pinnacle of individual personal customization. I honestly believe that no other manufacturer can achieve what we do." ■





## TOM O'RIORDAN

Chairman  
IQ Brands  
Naples Ferrari Club

Tom O'Riordan is the President of the Naples Chapter of the FERRARI Club of AMERICA.

Outside of the Ferrari glamour Tom is well networked in all significant global markets. Tom O'Riordan is an exceptional Business Leader. He is both respected and recognized in the apparel, footwear, and sporting goods market segments as a leader to develop strategic operational initiatives, which expand brand presence into markets on a global scale and enhance profitability.

Tom is Chairman / CEO of IQ Brands. IQ Brands is a PE backed company in the apparel, accessory, and hosiery business whose customers include retailers such as Nordstrom. Tom is also an operating partner in Huron Capital. Most recently, Tom has been President of Tom O'Riordan and Associates.

A major success was the turnaround of CHEP U.S. as Chief Operating Officer of the \$1.2B revenue unit increasing Gross Margin by 240 basis points and improving cash flow by \$7.8M while investing \$24.5M in Capex. Under Tom's leadership, CHEP U.S. won back Nestles, Clorox, Kraft, Unilever, Del Monte, ConAgra, and Coca-Cola business from competitors.

For the previous 15+ years, Tom has served as President/ Chief Executive Officer/Chief Operating Officer for both privately-held and publicly-traded manufacturers/retailers of apparel and footwear. ■



## RATHAN KUMAR MobiCom

Mr. Rathan Kumar, a serial entrepreneur with over three decades of business experience in international markets, spanning financial services, technology, golf and the hospitality industry, considers 'luxury' as habitual indulgence to a sumptuous living.

Mr Kumar believes that the more private clubs engage with their members, the more they would be able to not just retain members but also recruit new to the club.



This brings him to his latest technology driven business venture, MobiCom, the world's largest aggregation platform of private clubs and their members and orchestrator of a network of luxury lifestyle products and solutions catering to this demographic, enhancing value for everyone involved.

Aspirations of the private club member soar higher with each passing year, driven by fast paced lifestyles, global travel and the desire for deeply engaging and novel experiences.

One of MobiCom's business vertical, PlatinumClubNet™ serves a global network of 845 Platinum Clubs®, rated as Michelin Star among private clubs, across 50 countries worldwide, with a demographic of 1.5 million members representing 0.1% the population of society's wealthiest consumers.

On an average, a private club has over 70 types of events on its calendar in a year catering to diverse interests and preferences of their membership. This offers players across every luxury segment a wide array of opportunities to deeply engage with the member within the environs of their private club – considered a home away from home by members.

With MobiCom, Mr. Kumar intends to create a symphony of luxury experiences across physical and digital touchpoints, while staying relevant to private clubs in engaging with their members. ■



# DESIRE

*Well Designed Homes for Sale*

Legendary  
Spanish Revival

*Beverly Hills, CA*





Originally designed by famed architect Wallace Neff, this illustrious home in the Beverly Hills Flats sets a new standard for indoor-outdoor living amid a legendary Spanish Revival. Located on Arden Drive's iconic 700 block, this thoughtfully maintained approx. 10,000 S.F. compound, inclusive of a detached guest suite, features 6 beds and 9 baths. Beyond the magnificent estate's luxurious gated entry and porte-cochere lies manicured, lush landscaping while the main home encases a center grassy courtyard with a large pool and spa at the outer edge.

Upon entry of the grand foyer, the home flows in two directions connected by a glass-walled hallway, flanking the exquisitely renovated 2-story ballroom with the home's original wood beams, solid marble fireplace and details from its conception in 1929.



WELL-DESIGNED HOMES FOR SALE



## SIDE NOTE:

*There is a maid's suite and two laundry rooms, as well as a 2-car garage. Home is ready to be shown and moved into right away.*

The compound's impeccable design pays great attention to detail, as exemplified by preserved, hand-painted Talavera tiling, custom iron doors, stained glass, wood-paneled ceilings with decorative medallions and more—all accented by state-of-the-art modern updates. There is a main kitchen as well as a separate chef's kitchen with a service entrance, a large dining room with rich details and two spacious family rooms, one of which features a bar area and pool table room. Most rooms have custom floor-to-ceiling windows and doors that seamlessly open to outdoor seating areas, making it ideal for entertaining. The curved entry staircase leads to the impressive master suite, while the other wing features two en-suite bedrooms and a junior master en-suite. In addition, there is a lower 3rd level with a large wine cellar and cutting-edge screening room. ■





*Offered at \$17,250,000*

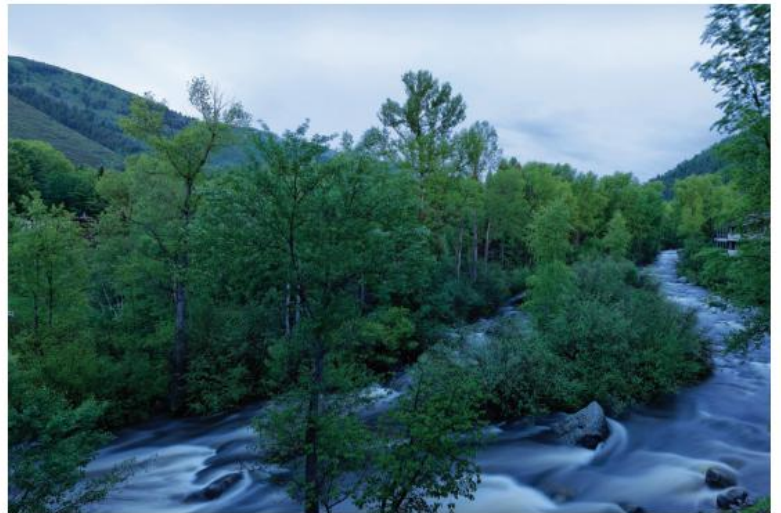
For more information contact:  
Madison Hildebrand  
Compass  
310.818.5788





All Luxury All Furnished  
**ASPEN TOWNHOME**  
*Aspen, CO*





**S**et on the bank of the Roaring Fork River yet conveniently located in town and close to the core, this sophisticated townhome offers luxury and serenity to those looking for their Aspen dream home. Remodeled in 2013 and further in 2017, the 4,110 square foot, 4 or 5 bedroom residence is a blend of mountain chic modernism.



WELL-DESIGNED HOMES FOR SALE



"An easy walk to the gondola,  
restaurants and shopping, with  
everything Aspen has to offer  
right outside your door."

From the state-of-the-art kitchen to the glass enclosed wine storage, the open floor plan lends itself well to entertaining and with access to the generous patio overlooking the river, this is indoor/outdoor living at its finest. Special amenities such as a thoughtfully built media room, custom office, elevator, underground garage, and cleverly created hidden storage for everything from ski boots to bicycles, make this the property that will end your search for a haven in Aspen. An easy walk to the gondola, restaurants and shopping, with everything Aspen has to offer right outside your door. ■





*Offered for \$10,450,000 Furnished*

For more information contact:

Craig Morris

Aspen Snowmass Sotheby's International Realty

Craig.Morris@sothebysrealty.com

970.379.9795

[www.1035EDurant.com](http://www.1035EDurant.com)





# Private Country Compound

*Greenwich , CT*





Spectacular and private, this property is an absolute oasis of perennial gardens, rock outcroppings, rolling lawns, blooming bushes, trees and flowers, offering three seasons of vibrant color. Perched on over 8 acres with glorious views, one is protected by conservation property with a picturesque river, trails and serenity.

An award winning home by nationally noted architect, Joeb Moore, the aesthetic of this home embodies a classic modern take on a country farmhouse. The 4 bedroom and 4.2 bathroom, 8,115 square foot home is flooded with natural light, creating a seamless transition from the exterior of the house to all of the living spaces. The interior is a juxtaposition of larger entertaining rooms with intimate family rooms, but all with access to the gardens.





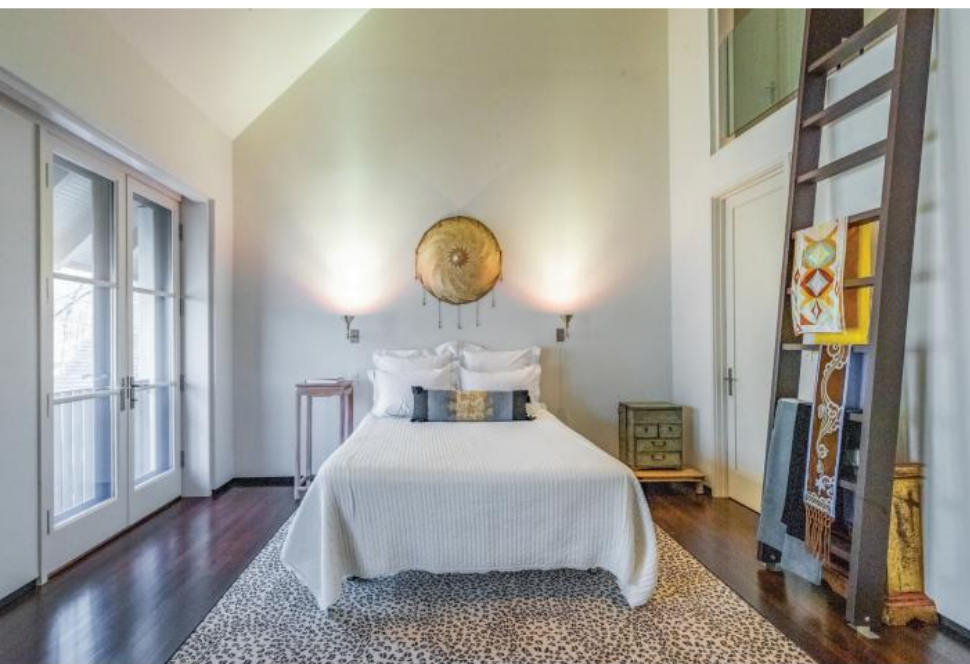
### SIDE NOTE:

*The exterior gardens right off the home were designed by famed firm Kelly, Varnell, Virgona Architects where they emphasized the beauty of native plants mixed with a variety of specimen trees. Additionally, the home features a tennis court and large vegetable garden.*









The kitchen is a chef's dream; a mix modern element of stainless steel with more traditional look of a farmhouse sink, hardwood floors and beautiful glass/wooden cabinetry and breakfast nook. The living room boasts reclaimed limestone floors with radiant heat and large French doors provide an ever changing view of the natural surroundings. The second floor is composed of 3 bedrooms (two of which have loft areas for reading or sleeping) with en-suite bathrooms and the Master Suite, replete with soaking tub and separate steam shower. The lower level features a media room, game room and gym.

The guest cottage/studio with bath, is the perfect indulgence of simplicity and high design. Glass doors open to create an indoor/outdoor space.

Just as the home frames the natural surroundings, the grounds accentuate the home; a symbiotic relationship. The exterior gardens

right off the home were designed by famed firm Kelly, Varnell, Virgona Architects where they emphasized the beauty of native plants mixed with a variety of specimen trees. Additionally, the home features a tennis court and large vegetable garden.

This magnificent country compound provides the utmost in both style and sophistication within the backdrop of the well maintained natural beauty for either every day or weekend living. ■

## AWARDS:

2009 RADA > Design Award

2008 CT Cottages & Gardens IDA > First Honor

2008 AIA CT & CT Magazine > Alice Washburn Award

2007 AIA NE > Merit Award

2004 AIA CT > Honor Award





*Offered at \$3,488,000*

For more information contact:

Shelly Tretter Lynch

Compass | [compass.com](https://www.compass.com)

[Shelly.TretterLynch@compass.com](mailto:Shelly.TretterLynch@compass.com)

203.550.8508



A modern living room with a high ceiling featuring exposed wooden beams. A large stone fireplace with a mosaic tile surround is the focal point. The room is furnished with light-colored armchairs, a dark wood coffee table, and a side table with a lamp. Large windows on the right side offer a view of a lake and mountains. The floor is made of light-colored tiles.

# Modern Sophistication Belvedere

*Belvedere, CA*





This immaculately maintained and private custom-built estate is prominently perched on the southern side of Belvedere Island. It is graced by wall-to-wall windows for enjoying the panoramic bay views of San Francisco, the Golden Gate Bridge, Sausalito and Mt. Tamalpais. This sophisticated and luxurious estate is a masterpiece of modern design and craftsmanship featuring custom onyx walls, whitewashed walnut cabinets, hand-carved fireplace surrounds, Turkish travertine marble floors, green slate decks, stairs, walkways, and Brazilian rain forest marble throughout.



WELL-DESIGNED HOMES FOR SALE



### SIDE NOTE:

*This property is one of the few private Belvedere parcels that are inset and have amazing wind protection.*

Every detail was carefully selected and quality crafted. Highlights include automatic multi-shade systems, heated floors throughout, highly insulated construction, and generous usage of interior and exterior natural cedar wood. This property is one of the few private Belvedere parcels that are inset and have amazing wind protection. This is 3,141± sq. ft. of modern elegance on a very private, custom landscaped, large down-sloped parcel. The home boasts five off street parking spaces and an additional oversized 722± sq. ft. 2.5 car garage with custom floors and wood insulated doors. For more detailed information, please visit: [www.18Eucalyptus.com](http://www.18Eucalyptus.com) ■





*Offered at \$5,875,000*  
For more information contact:  
Olivia HSU Decker  
Golden Gate Sotheby's International Realty  
415.720.5915  
[Olivia@SanFranciscoFineHomes.com](mailto:Olivia@SanFranciscoFineHomes.com)  
[www.SanFranciscoFineHomes.com](http://www.SanFranciscoFineHomes.com)



A large, two-story manor house with a green lawn and trees in autumn foliage. The house features a prominent front porch with columns and a stone foundation. The lawn is well-maintained and green, with a paved walkway leading to the porch. The trees are in various stages of autumn color, with some showing vibrant reds and oranges, while others are still green. The sky is blue with scattered white clouds.

# Private Country Charming Manor

*Greenwich , CT*





**B**eautiful "Brookside Park". This special and private association, with only seven residences, is within walking distance to Greenwich Avenue, Greenwich Train Station and Greenwich Library. The house has been defined by the 1920's architecture and has been restored, renovated and expanded with the integrity of the original English Manor and all the modern conveniences for today's lifestyle.

Set above the 1.88 park-like acres, this home boasts over 6,100sq ft of large scale entertaining rooms, high ceilings, millwork by talented craftsmen and an exceptional entry.



WELL-DESIGNED HOMES FOR SALE



SIDE NOTE:

*This house features updated original detailed craftsmanship creating exceptional character and charm.*







"This home marries  
the charm of a 1920's  
English manor with the  
modern conveniences  
for today's families."







You will find 6 spacious bedrooms, and 5.1 bathrooms. This house boasts updated original detailed craftsmanship and state-of-art technology throughout. The property also includes a 2-story open plan carriage house with a game room on the first floor and an office with a full bath on the second floor.







Offered at \$3,825,000  
For more information contact:  
Shelly Tretter Lynch  
Compass | [compass.com](https://www.compass.com)  
[Shelly.TretterLynch@compass.com](mailto:Shelly.TretterLynch@compass.com)  
203.550.8508







# St. Helena

World-Renowned Lifestyle

*Napa Valley, CA*





**E**xremely rare opportunity to purchase the entire St. Helena Reserve, consisting of 2 magnificent homes and 5 extra parcels for total of  $\pm 605.65$  acres with  $\pm 173$  acres potentially plantable for vineyards (subject to approval). Luxuriate in the world-renowned indoor-outdoor Napa Valley lifestyle in the two newly constructed fabulous private gated ridgetop estate-size homes, plus build a family compound or vineyards in the extra 5 parcels with majestic panoramic views of surrounding vineyards, lush greeneries and Lake Hennessey

One estate has  $\pm 7,400$  sq. ft. contemporary style 6 bedroom, 6.5 baths home on  $\pm 67.4$  acres, boasting grand spaces in every room. Entertainer's dream kitchen opens to a broad lawn and infinity edge pool, spa, bocce ball court, grand living/dining room with 18-foot high ceilings, family room with fireplace, home theater/media room and a separate guest quarters. Second estate of  $\pm 6,350$  sq. ft. on  $\pm 69.4$  acres with 6 bedrooms, 6.5 baths, pool, spa, bocce court. All within 15–20 minutes of the convenience of Rutherford, Yountville and St. Helena's shops, gourmet restaurants and two world class resorts at Auberge du Soleil and Meadowood. [www.StHelenaReserve.com](http://www.StHelenaReserve.com)

### SIDE NOTE:

*The St. Helena Reserve has 605 acres with two homes at 7,400 sq ft and 6,350 sq ft and 5 parcels for additional homes. 100+ acres vineyard potential.*





**SIDE NOTE:**

*Entertainer's dream kitchen opens to a broad lawn and infinity edge pool, spa, bocce ball court, grand living/dining room with 18-foot high ceilings.*





WELL-DESIGNED HOMES FOR SALE



Offered at \$21,500,000  
For more information contact:  
Olivia HSU Decker  
Golden Gate Sotheby's  
International Realty  
415.720.5915





## John's Island Vero Beach, Florida

PRICE: \$6,950,000

BEDROOMS: 6

BATHROOMS: 7 Full 1 Half

SQUARE FEET: 10,611± GSF

John's Island Real Estate Company

772.231.0900

JohnsIslandRealEstate.com

Welcomed by the southern charm of a winding driveway that unfolds beneath the canopy of sun-dappled oaks, this enchanting six bedroom and seven-and-a-half bathroom riverfront home is poised on a lush 1.05± acres on the prestigious Gem Island. The retreat plays host to incredible indoor/outdoor living opportunities over two levels, where one can relax on the covered loggia, take a dip in the pool, or enjoy a myriad of water activities steps from the home. With 150± feet of pristine frontage on the iconic Intracoastal Waterway, the backyard extends to a large dock with lift, framed beautifully by sea grapes.

A spacious living room and dining area open to the back terrace through a series of French doors, while the mahogany library/den with fireplace and wet bar creates a quiet retreat. Space for guests abound, with nicely appointed en suite bedrooms on both top and floor levels. Accessible to all principal rooms on the second level, an expansive covered porch with roll-down shades provides panoramic views of the Indian River, as well as brilliant sunsets over the spoil islands. Other enviable features include an elevator, custom millwork and architectural details throughout, eat-in kitchen, wine refrigerator, second level office, and bright marble guest bathroom.





Nestled between the gently lapping waves of the Atlantic Ocean and the sunlit shores of the Indian River sits one of the most renowned and established seaside communities on the eastern seaboard – John’s Island. Known for its casual elegance and unparalleled quality of life, members enjoy world-class social, recreational, education and cultural activities, three championship golf courses (designed by Tom Fazio and Pete Dye), 17 Har-tru tennis courts, pickleball, squash, croquet, three miles of private

beach, spectacular oceanfront Beach Club, Health & Fitness Center, vertical equity memberships, an abundance of water activities and acres of lush, natural habitat. Convenient access to Vero Beach’s private airport with flights aboard Elite Airways, and a wealth of cultural amenities are just minutes away.

For more information please contact John’s Island Real Estate Company at (772) 231-0900 or visit [JohnsIslandRealEstate.com](http://JohnsIslandRealEstate.com). ■







## Villa Kismet St John USVI

PRICE: \$6,250,000  
BEDROOMS: 7  
BATHROOMS: 7.5

Corby Parfitt  
Sotheby's International Realty  
340.643.6340

Blessed with a prime knoll top location on the crown jewel of the US Virgin Islands, Villa Kismet stands alone as St John's premier residential estate. Just minutes away from the full service airport on neighboring St Thomas, Kismet offers easy access from Europe, the Middle East and the Americas to all the charm and natural wonders of this uniquely protected Caribbean island. From its ultra private perch, the villa offers 360-degree views framing miles of open ocean, numerous protected bays, sleepy outlying islands and thousands of acres of verdant hillsides within the vast Virgin Islands National Park. A sprawling compound befitting its one-of-a-kind location, Villa Kismet's subtle Moroccan undertones are evident throughout the numerous guest suites, common living areas, outdoor spaces, billiards room, home theater and separate caretakers residence.





The approach to Kismet winds its way to the summit of Maria Bluff just outside the island's charming main town of Cruz Bay. Once inside the gated parking court, a custom tiled staircase leads you onto the central courtyard and pool deck revealing the drama of this unique knoll top oasis. Inside, the villa offers an immaculate confluence of the latest in high tech convenience along side old world custom quality finishes including tile work throughout by renowned artist Muhammed Benslimane of Mosaic House New York. Luxury ensuite accommodation for up to sixteen guests is accessed via shaded verandas interconnecting the villa's three main pavilions offering plenty of refuge from the villa's more public common spaces. Above it all, an observation tower with plush seating for up to twelve offers the island's most spectacular vista to take in the world-class sunsets as a pastel of ever changing colors gives way nightly to the quietly twinkling lights of St Thomas in the distance. ■







## St John USVI

PRICE: \$7,750,000  
BEDROOMS: 5  
BATHROOMS: 4.5  
SQUARE FEET: 7,204

Corby Parfitt  
Sotheby's International Realty  
340.643.6340

Welcome to Le Chateau - St John's ultimate mountaintop estate. Commanding 360 degree views from the very peak of the Estate Catherineberg deep within the Virgin Islands National Park, the property has just received a comprehensive renovation and expansion resulting in a property unlike any other in the Virgin Islands. This 5 Bedroom, 4.5 Bath, 7,204 Square Foot St. John Island Property is truly an exotic escape or should we say a true treasure.

Unique to such a dramatic hillside setting, the property allows for vast expanses of single level living seamlessly transitioning from well-manicured lawns, sophisticated modern interiors and wide open entertainment pavilions framing postcard views capturing a number of St John's most idyllic north shore beaches. ■









**1336 N State Parkway**  
Gold Coast | Chicago, IL | \$10,500,000  
5 Bed | 5.4 Bath | 9,000 sqft



**840 N Lake Shore Drive, Unit 2601**  
Streeterville | Chicago, IL | \$13,500,000  
6 Bed | 6.2 Bath | 8,800 sqft



**1241 N State Parkway**  
Gold Coast | Chicago, IL | \$6,495,000  
6 Bed | 6.2 Bath | 7,400 sqft



**25 E Cedar Street**  
Gold Coast | Chicago, IL | \$5,999,000  
5 Bed | 5.2 Bath | 7,000 sqft



**2704 N Lakeview Avenue**  
Lincoln Park | Chicago, IL | \$5,480,000  
6 Bed | 4.3 Bath | 10,018 sqft



**632 W Deming Place**  
Lincoln Park | Chicago, IL | \$5,000,000  
6 Bed | 7.1 Bath | 10,150 sqft



**432 W Grant Place, Unit 2W**  
Lincoln Park | Chicago, IL | \$3,750,000  
3 Bed | 3.1 Bath | 4,300 sqft



**2723 N Lakewood Avenue**  
Lincoln Park | Chicago, IL | \$3,500,000  
5 Bed | 4.2 Bath | 6,365 sqft



**4144 N Greenview Avenue**  
Graceland West | Chicago, IL | \$2,550,000  
5 Bed | 4.2 Bath | 5,360 sqft



**800 N Michigan Avenue, Unit 5002**  
Park Tower | Chicago, IL | \$2,500,000  
3 Bed | 3 Bath | 2,500 sqft



## A RARE OPPORTUNITY TO LIVE IN THE ROCKEFELLER MANSION

Own a part of american history, this 56 acre new york estate has a 10,000 SF mansion,  
rich with history and amenities. [RockefellerEstate.com](http://RockefellerEstate.com)



## THE ULTIMATE TEXAS RANCH

This custom built European stone 6,900 SF mansion was designed and constructed by one  
of the country's foremost interior designers for her own personal country estate. Secluded on  
245 acres in the heart of the East Texas piney woods with stables and lake. Prime location just  
one hour East of Dallas. \$5,100,000. [FourFRanch.com](http://FourFRanch.com)



---

**MARILYN HOFFMAN** | HOFFMAN INTERNATIONAL PROPERTIES

---

214-698-1736 [www.MarilynHoffmanRealtor.com](http://www.MarilynHoffmanRealtor.com)





# Country Club Properties OF HIGHLANDS



Rare in-town opportunity in prestigious Ravenel. Meticulously maintained, this home in the private gated Ravenel development is tucked away at road's end in a tranquil, private setting where you can live in peace and quiet and still be right in town. The house backs up to protected Land Trust wooded property and the Fodderstack mountains on US Forest land. Main floor living area is open concept with vaulted ceiling and stacked stone wood burning fireplace in the living room. Master suite, laundry room, pantry, half bath, screened porch and an open deck are also on the main level. Lower level living area has a stacked stone gas fireplace, wet bar, full deck and two guest bedroom suites. Second lower level has a third living area, two guest bedroom suites and large workshop. Offered for \$2,400,000. MLS# 91397



Spectacular mountain view with very usable grounds, lovely landscaped yard, guest house, main house is in excellent condition and was built by Deadeye Potts. PRIVATE AND SECLUDED and borders USFS Lands. Old Brushy Face is a very Desirable neighborhood with exceptional elevation and location to Highlands! Offered at \$2,000,000. mls #92355



Large and spacious Ranch plan is in move in condition with a spectacular view. The owners and just added a new roof. Designer quality with 3 bedrooms plus a family room with full bath, plus a 2/1 bath guest house. Cathedral ceilings in the living room, updated baths, carport. Estate sized lot. The best closets you have ever seen! Offered at \$1,795,000. mls #92227

WWW.CCPHIGHLANDSNC.COM



*W. Terry Potts*

828.526.2520

CCP4TERRY@GMAIL.COM





**Special  
PROPERTIES**  
OR OF BROOK HOLLOW GROUP INC. REALTORS

**CHRISTIE'S**  
INTERNATIONAL REAL ESTATE



## 30 Minutes from Manhattan

**Saddle River, NJ 9.4 ACRE ESTATE \$9,800,000** Custom built country estate with a 1st floor master bedroom suite and great floorplan for large scale entertaining. Indoor and outdoor pool/spa, cabana, tennis court and 6-car garage. **Also includes adjoining property with 10 stall barn & guesthouse = 9.4 acres.**



**Saddle River, NJ MILLPOND — 14 + ACRES \$11,500,000** One of the most extraordinary estates in the NY/NJ metropolitan area offering a 2-acre lake, tennis ct., pool, large building that can accommodate 8 cars + studio, 9-stall barn, a 5 bedroom guesthouse. Magnificent French Chateau with panoramic views!



**Mahwah, NJ RIVERFRONT EQUESTRIAN ESTATE — 23+ ACRES \$3,995,000** 5 bedroom *Hampton's style* shingle & stone masterpiece offers expansive view and more! The 9-stall barn opens to a limestone jumping area, paddocks and trails along the river. Massive artist's loft and infinity pool.



**Saddle River, NJ CELEBRITY STUNNER \$5,995,000** Notable actress, comedian & philanthropist offers this stunning English Country Estate on over 5.7 manicured acres. 6 bedrooms, 7.2 baths plus guesthouse, lagoon pool with waterfalls, generator, elevator and 3-car garage plus an artist's studio!



**Saddle River, NJ DECORATOR'S SHOWPLACE \$2,299,000** Elegant 2000's built manor styled residence in move-in condition with beautiful woodworking throughout. High ceilings, gourmet kitchen, media and gym in lower level. Inground gunite pool, 3-car garage. Very private setting.

**CHRISTIE'S**  
INTERNATIONAL REAL ESTATE

Exclusive Affiliate of  
**CLIENTELE**  
LUXURY

Every Home is *Special* to Us.

**LEVERAGE**  
GLOBAL PARTNERS

**RPLG**

**VICKI GAILY REALTOR-ASSOCIATE® · FOUNDER · MARKETING DIRECTOR**  
OFFICE 201 934-7111 · CELL 201 390-5880 · [VGAILY@SPECIALPROPERTIES.COM](mailto:VGAILY@SPECIALPROPERTIES.COM) · [SPECIALPROPERTIES.COM](http://SPECIALPROPERTIES.COM)  
FOLLOW US ON INSTAGRAM & FACEBOOK: @SPECIALPROPERTIESNJ

Information deemed reliable but subject to errors and omissions.



# VANDERBILT RESIDENCES

*AS NEWPORT AS IT GETS*



Newport, RI – Vanderbilt Residences – Exceptional three-bedroom waterfront residence featuring a private 1,000 square foot roof top deck. This stunning penthouse residence occupies a half-floor and has open living areas with amazing views of the famed Newport Harbor. Private heated garage, on-site management and optional guaranteed dockage. Located in the heart of Newport! Purchase Price: \$2,895,000



**STACIE MILLS**

**Principal Broker**

Vanderbilt International Properties Ltd.

19 Brown & Howard Wharf, Newport, Rhode Island 02840

Office: 401-619-3333 | US Mobile: 401-862-2793

[www.vip-newport.com](http://www.vip-newport.com)





# key west & the lower keys

*Leading* REAL ESTATE COMPANIES OF THE WORLD®



22 Hilton Haven Rd  
\$4,400,000

Amazing waterfront oasis in the heart of Key West. Main house, guest cottage, pavilion apartment, game room, double garage w/ loft, 40' pool, hot tub, entertainment bar, 105' dock w/ boat lift. 5BD/6.5BA | 6,000sf | 18,000sf lot



1501 Grinnell Street  
\$2,750,000

Character rich home in the desirable Casa Marina area features a light filled main house with soaring ceilings, Balinese pillars & walls of glass that open to an enormous pool, patio & guest house. 4BD/5BA | 2,902sf | 11,730sf lot



81 Cannon Royal Dr  
\$4,950,000

Luxurious plantation style home spread over 3 lots on coveted Shark Key. Gulf views from every room, chef's kitchen, elevator, verandas, heated/chilled waterfall pool, loggia, garage. 7BD/8BA | 6,800sf | 64,843sf lot



1300 Sunset Blvd  
\$11,900,000

Tarpon Ranch, an oceanfront estate on Summerland! Main house, guest house, indoor/outdoor sunroom & kitchen, wine cellar, elevator, infinity pool, spa, 100' dock w/ 2 boat lifts, boat ramp, garage. 6BD/6.2BA | 7,720sf | 56,564sf lot



3725 Eagle Ave  
\$1,799,000

Spanish style home designed for Keys living! Tropical backyard, alfresco dining, resort style pool w/ beach entry, waterfalls, fountains & spa. Updated interior, gourmet kitchen & master suite. 3BD/3BA | 2,454sf | 12,000sf lot



901 Casa Marina Ct  
\$3,650,000

Private & elegant tropical retreat on one of the most desirable streets in KW! Open & flowing floor plan, indoor/outdoor living & dining areas, resort style heated/chilled pool, lush tropical landscaped grounds located 1 block from the beach. 5BD/5.5BA | 3,524sf | 15,541sf lot



Terri: (305) 587-3407  
terri@terrispottswood.com  
www.terrispottswood.com

John Spottswood: (305) 395-2360  
Raymond Vazquez: (305) 395-1777  
tsv@trumanandcompany.com

**TRUMAN & CO. REAL ESTATE SERVICES**  
1205 TRUMAN AVE, KEY WEST, FL 33040



LAST LOOK



Come Discover Chalet Zermatt Peak, an extravagance 5 star unrivaled chalet roosted high over the town of Zermatt in Switzerland.  
[laurenbergercollection.com/properties/395-Villa-Zermatt-Switzerland/](http://laurenbergercollection.com/properties/395-Villa-Zermatt-Switzerland/)





THE PHOENICIAN  
SCOTTSDALE

# IGNITE YOUR SPIRIT

Spark your desire for the exceptional at The Phoenician, where endless experiences mingle with contemporary luxury to create a personalized collection of memorable moments. Arizona's premier AAA Five Diamond resort invites you to find your fire with diverse culinary explorations, signature activities and exclusive amenities designed to ignite your spirit in a way no other destination can.



MARRIOTT  
**BONVOY**

THE PHOENICIAN  
A LUXURY COLLECTION RESORT  
SCOTTSDALE, ARIZONA | 480.941.8200 | THEPHOENICIAN.COM







# BLACK BADGE

## CULLINAN

Where freedom meets desire.

Dare to be different.



Rolls-Royce Motor Cars NA, LLC  
[rolls-roycemotorcars.com](http://rolls-roycemotorcars.com)  
@RollsRoyceCarsNA

© Copyright Rolls-Royce Motor Cars NA, LLC 2019.  
The Rolls-Royce name and logo are registered trademarks.