

SEPTEMBER 2016 | ISSUE 3

for s

TIDAL CREATIONS
CRAIG MCPHILLIPS
JAMES DEVEREUX
BILLY LEE
STEVE PETERS
ROZ BANNAN
MARTYN SONSEARAY
AND MORE





NEILL HOOPER
DESIGNER | PHOTOGRAPHER
NEILLH@OZEMAIL.COM.AU

SECRET

SECRET MAGAZINE | ISSUE 3 | SEPTEMBER 2016 | WHERE'S THE FUN IF IT'S NOT A SECRET

Welcome to Issue 3.

And with winter comes very little shooting outside. Yep, even in sunny Queensland it's tough going to get an on location shoot sorted. So alot of this issue is made up from past shoots from our talented photographers and models. Again a lot of variety in all the pages here.

Here's to looking forward to the weather warming up with Spring and all of us getting out and shooting a little more!

Editors:

Gari Wilson
Steve Peters,
Greg Elkenhaus

Production:

Neill Hooper

Cover Photo:

Craig McPhillips

- | | |
|----|------------------|
| 2 | JAMES DEVEREUX |
| 16 | BILLY LEE |
| 20 | MARTYN SONSEARAY |
| 24 | CRAIG MCPHILLIPS |
| 34 | ROZ BANNAN |
| 38 | STEVE PETERS |
| 42 | TIDAL CREATIONS |
| 52 | TONY SHMARYAN |
| 60 | BILLY LEE |
| 64 | ROZ BANNAN |
| 66 | TIDAL CREATIONS |
| 72 | TONY SHMARYAN |
| 78 | BILLY LEE |
| 82 | TIDAL CREATIONS |
| 88 | ROZ BANNAN |
| 94 | TIDAL CREATIONS |





JAMES DEVEREUX

Using nature and the light of the hinterlands crisp early mornings, this duo have collaborated to create these bright, attention grabbing images.

Model: Sophia Lee

Location: Sunshine Coast
Hinterland





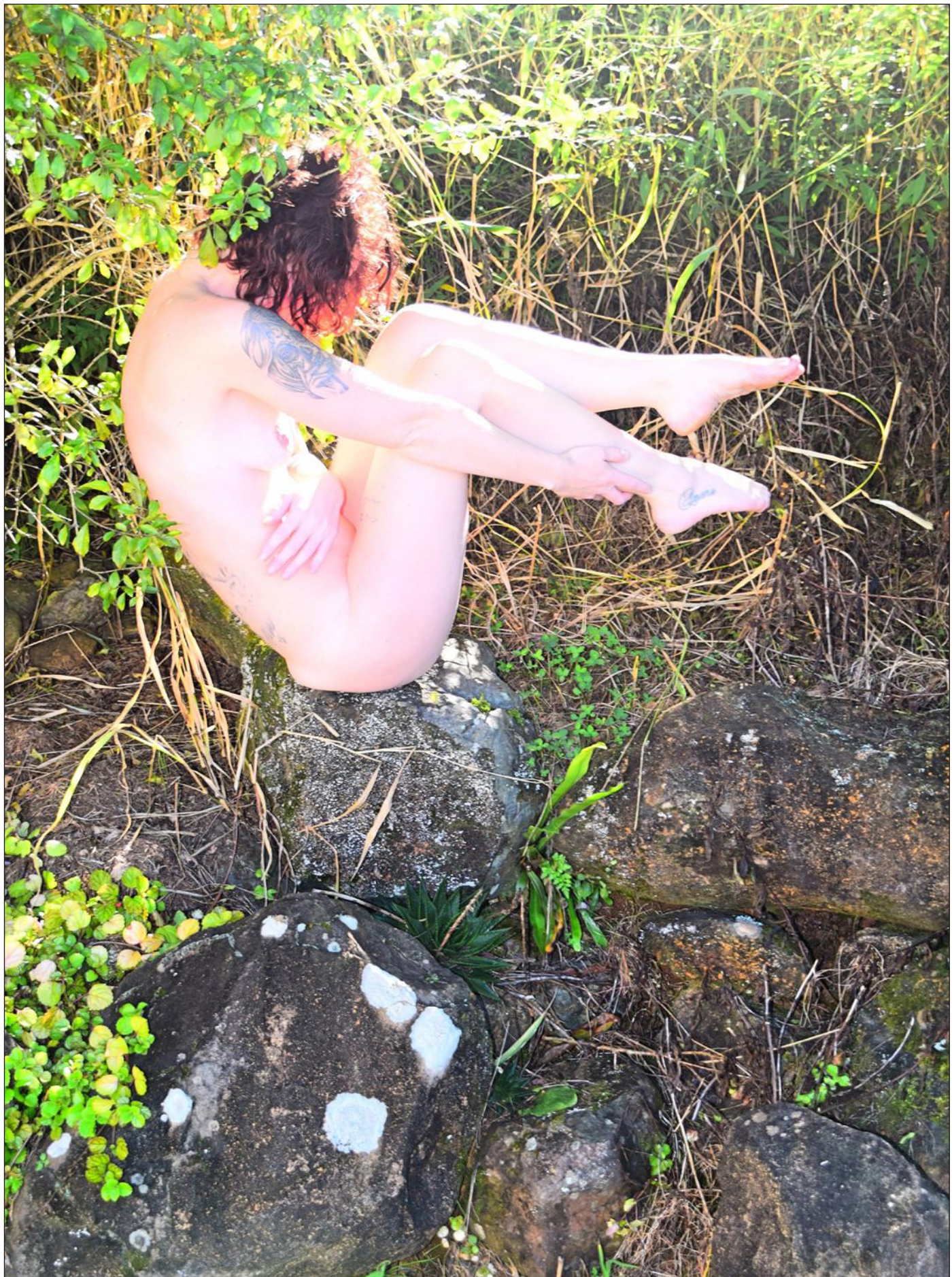
















BILLY LEE

Model: Roberta











MARTYN SONSEARAY

Model: Alena









CRAIG MCPHILLIPS

Myself and Chelsea, had a week on the lovely Fraser Island with fellow photographer BWAltimages and his lovely wife. We found the great location near Mc Kenzies jetty. It is just a joy, to share a passion, she loves the modelling, and I love shooting her. It is great to be able to share these images with you.

Model: Chelsea Jayde

Location: Fraser Island













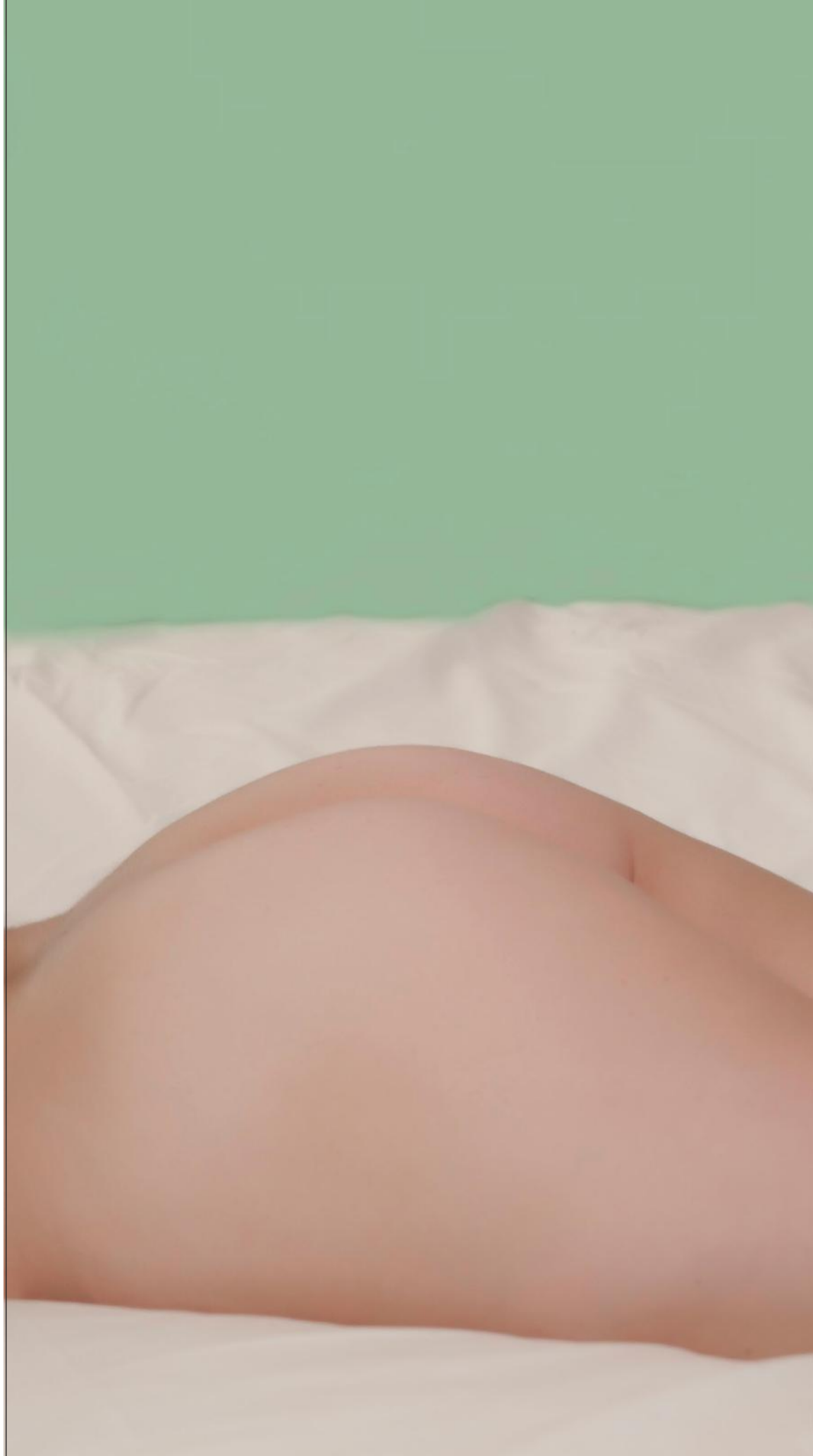






ROZ BANNAN

Model: Erin









STEVE PETERS

Model: Sybil











TIDAL CREATIONS

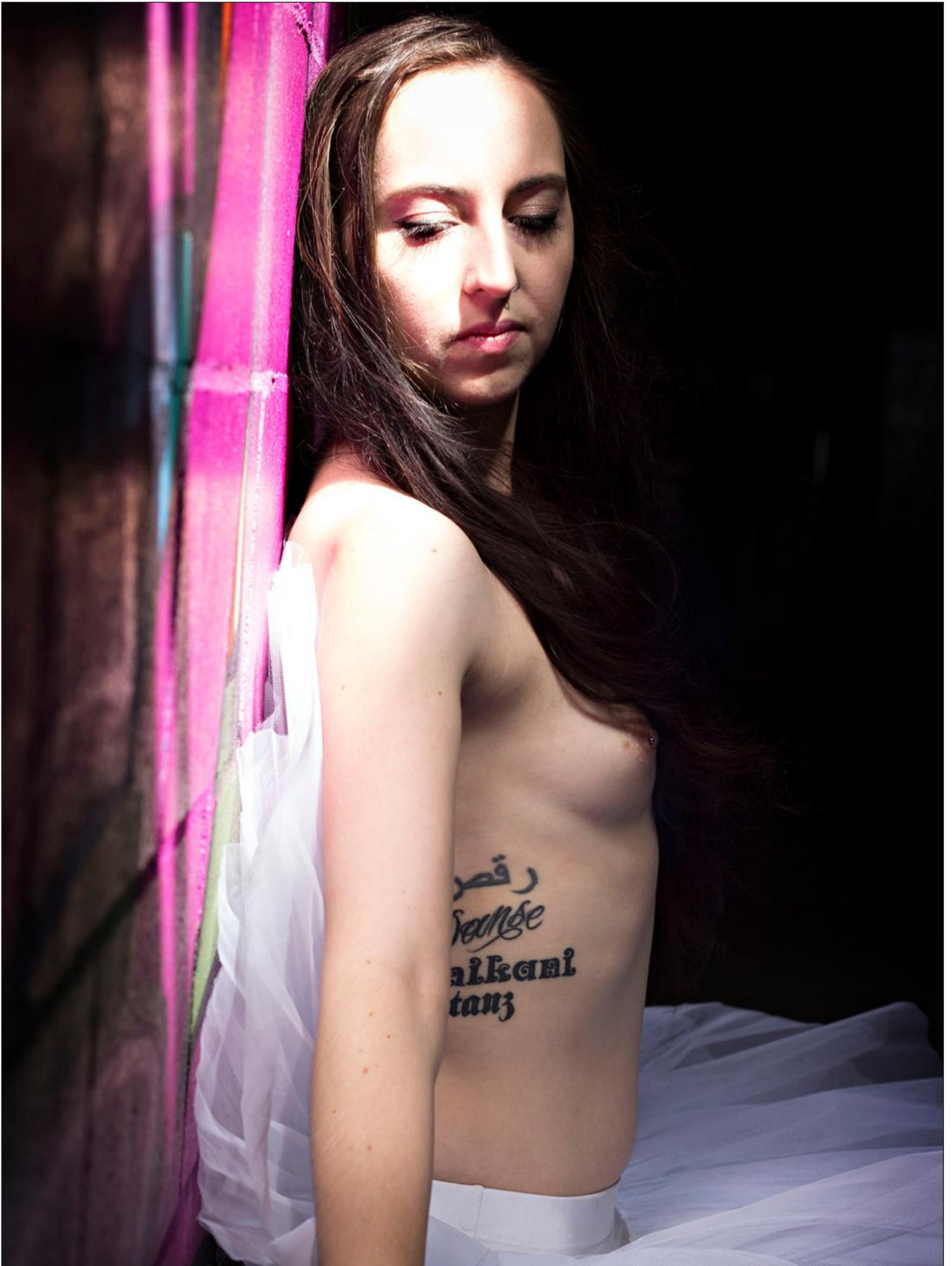
Model: Malakeh

















TONY SHMARYAN

Model: Sarrah Green



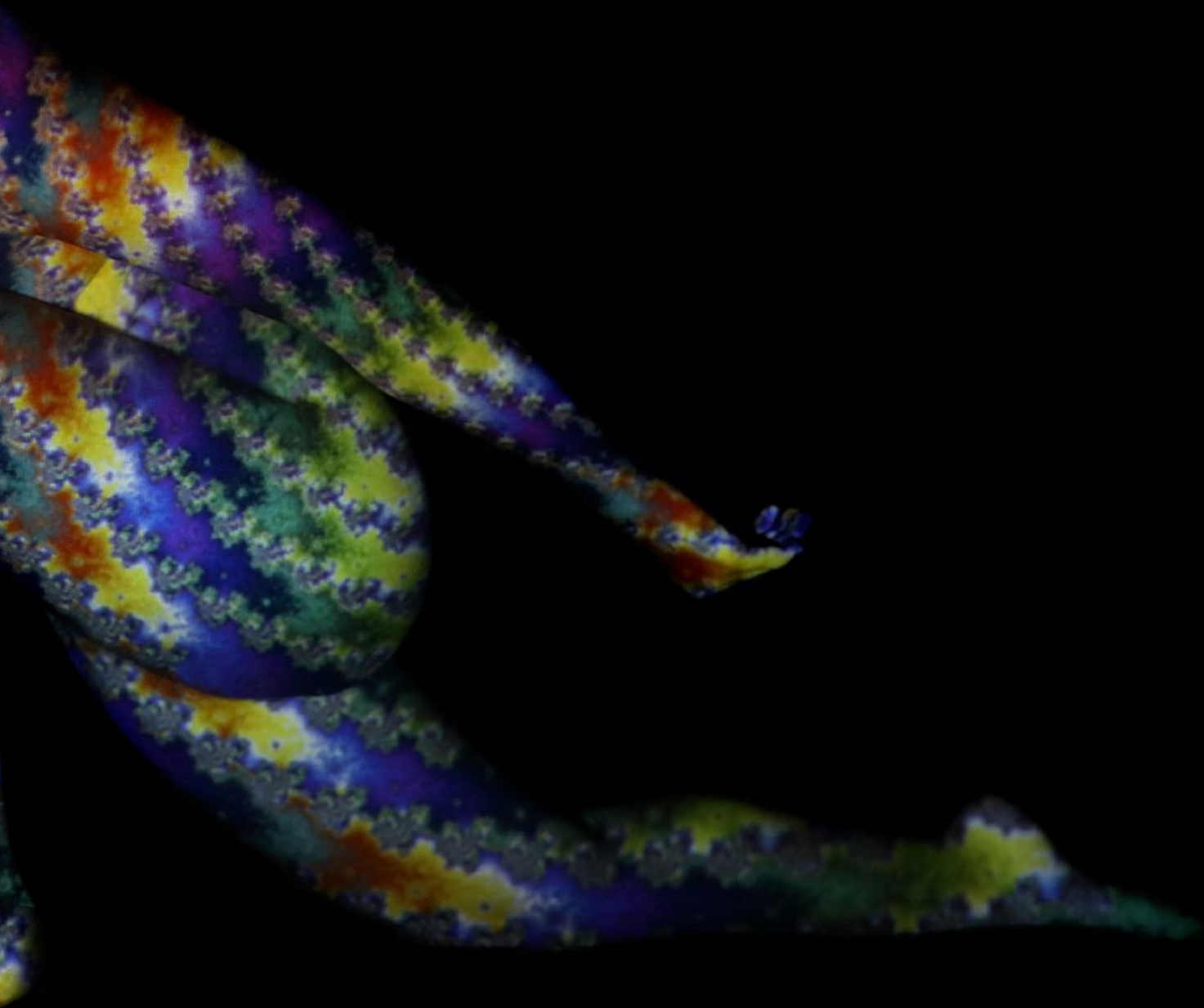






Model: Lara











ROZ BANNAN

Model: Jehs













TIDAL CREATIONS

Model: Beth James











TONY SHMARYAN

Model: Rebel









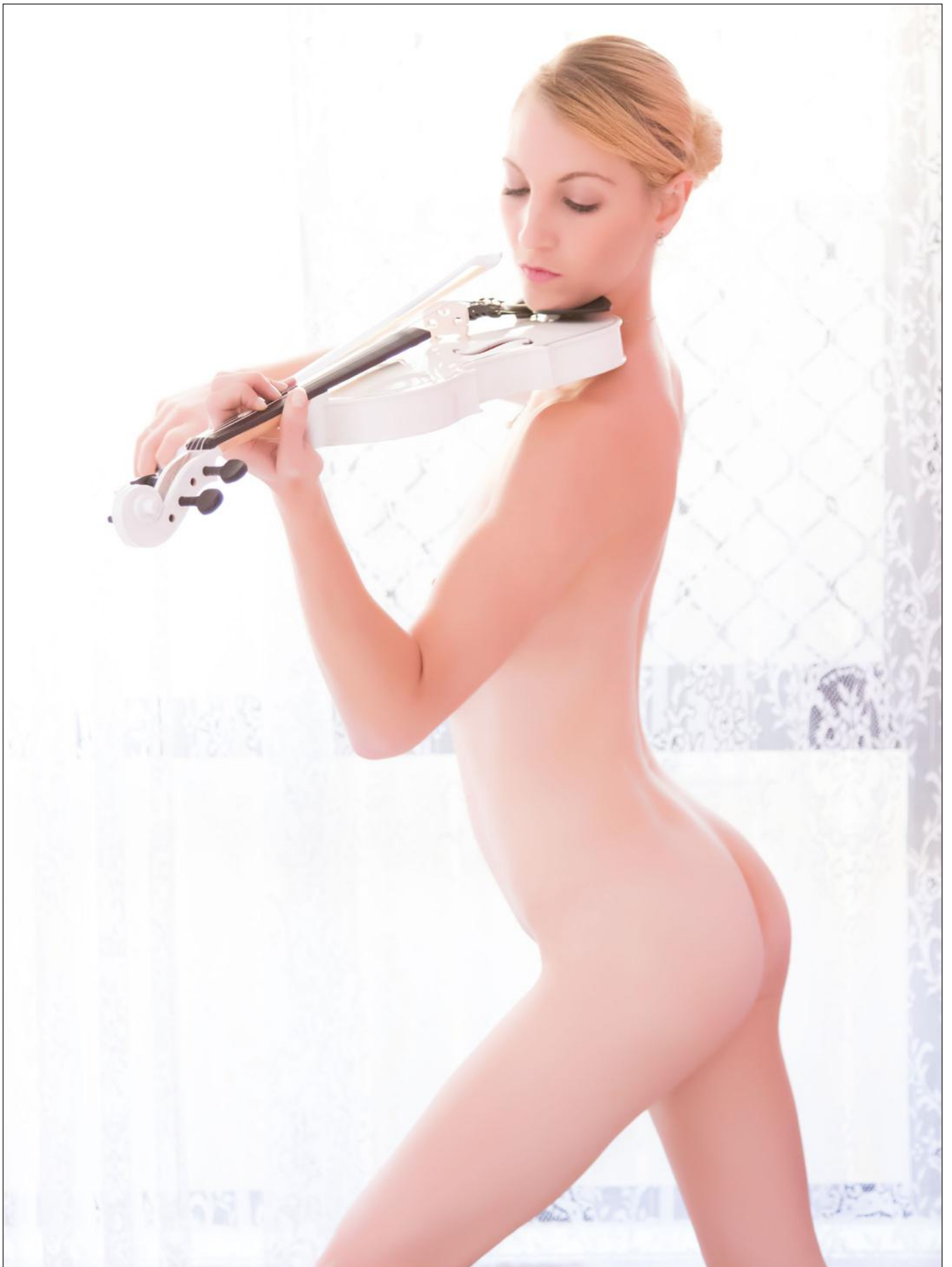


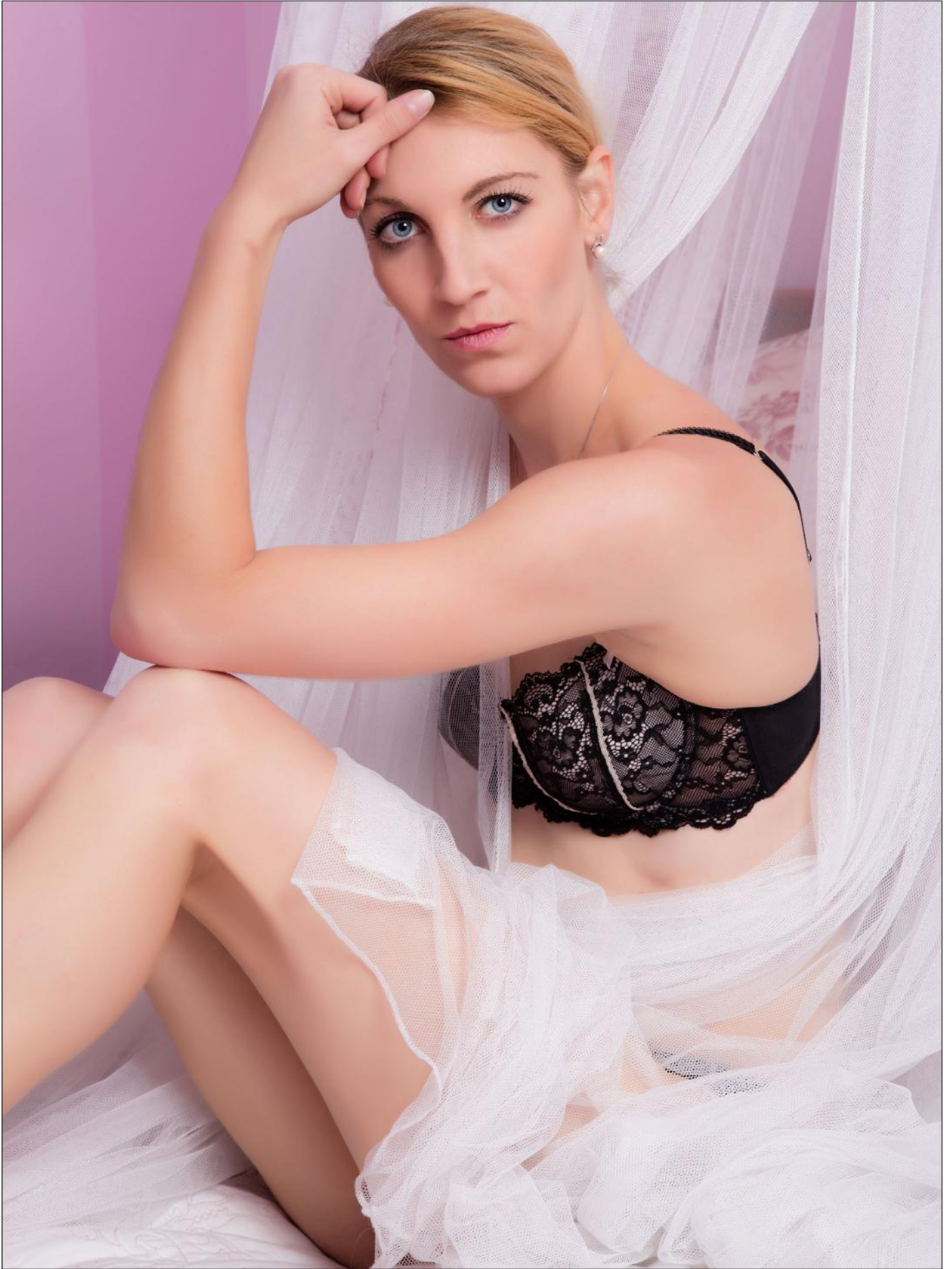


BILLY LEE

Model: Ginger











TIDAL CREATIONS

Model: Meluxine











ROZ BANNAN

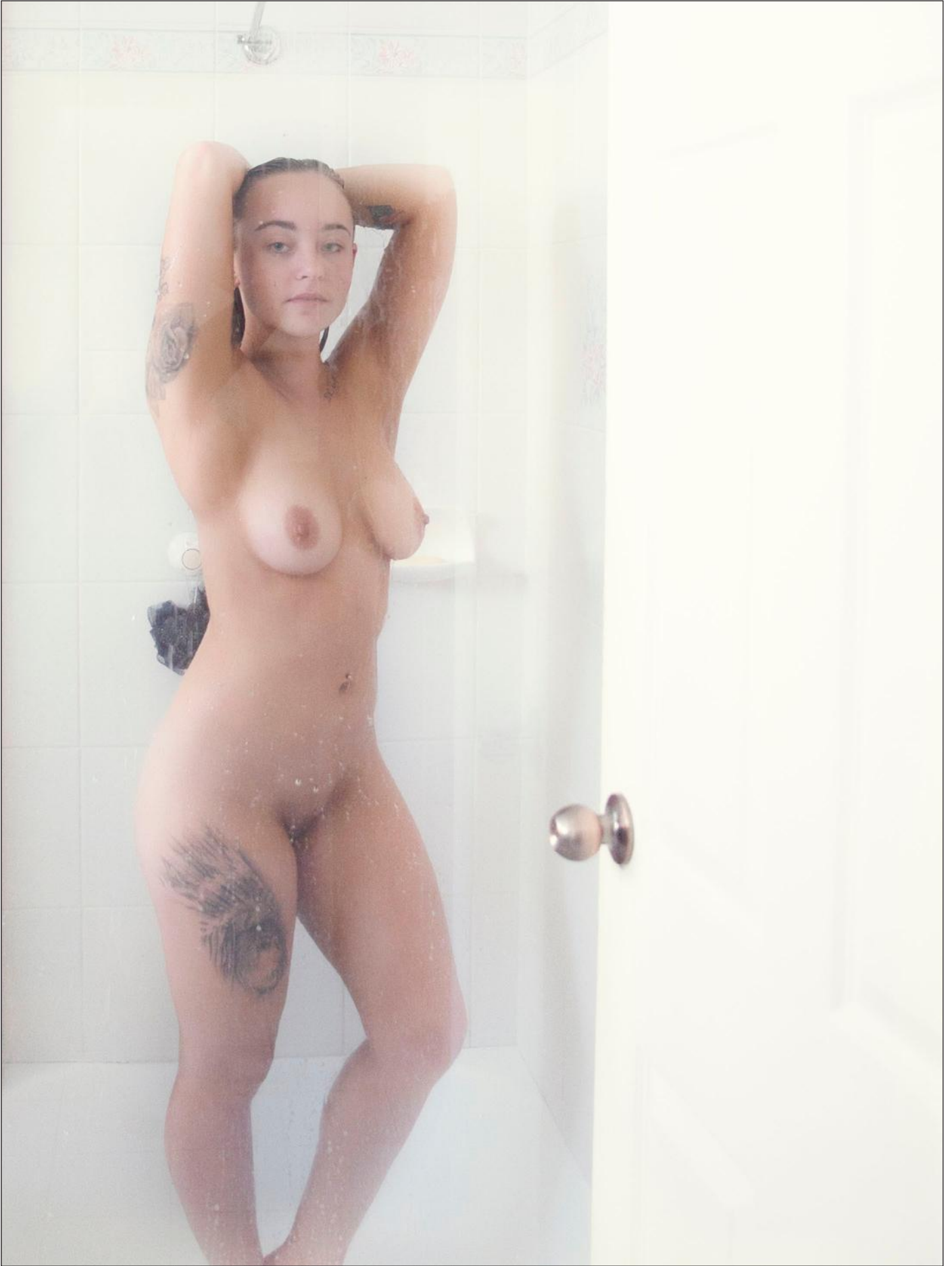
Model: Maddison













A full-page photograph of a woman with dark hair and bangs, posing nude on a large, weathered log in a forest. She is lying on her side, propped up on one arm, looking towards the camera. The forest is dense with thin trees and dappled sunlight filtering through the canopy. The foreground is blurred, showing more of the forest floor and logs.

TIDAL CREATIONS

Model: Ivy Lane



NEXT ISSUE...



BIGGER, BETTER, MORE SECRETS