



Driving India's transport with **4.5k+ lane kms** of roads

154 years in business | 70,000+ global workforce | Presence in 70 countries

Engineering & Construction | Infrastructure | Real Estate | Energy | Water | Financial Services

Shapoorji Pallonji And Company Private Limited
Corporate Office : SP Centre, 41/44 Minoo Desai Marg,
Colaba, Mumbai 400 005, India.
Tel +91 22 6749 0000

www.shapoorjipallonji.com

The



₹120

Ideal Home

The Ideal Home and Garden, October 2020 Vol 14 Issue 12

and Garden

**WE ARE
TRAVELING IN
#ODISHABYROAD**
THE SOUTHERN
SOJOURN

**LESSONS FROM
INSPIRING
WOMEN IN
DESIGN**

Iram Sultan
Jannat Vasi
Sarah Sham
Shabnam Gupta
Minnie Bhatt
Richa Bahl

**THERE'S
NO PLACE
LIKE HOME**

10+ HOMES ACROSS THE GLOBE



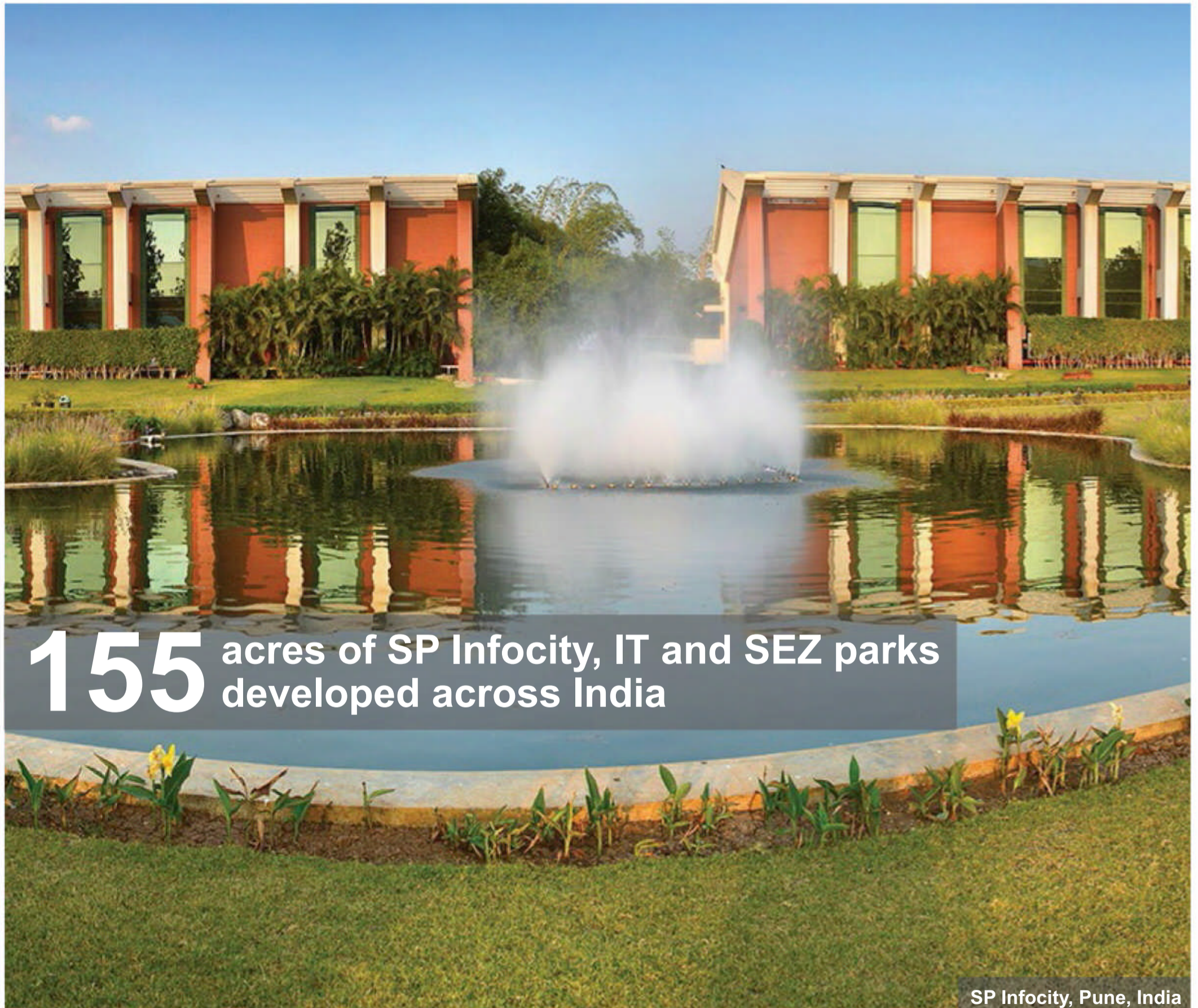
[/Idealhomeandgarden](#)

[@idealthomeIndia](#)

[/theidealthomeandgarden](#)

[/theidealthomeandgarden.com](#)

154 years in business | 70,000+ global workforce | Presence in 70 countries



155 acres of SP Infocity, IT and SEZ parks developed across India

SP Infocity, Pune, India

Engineering & Construction | Infrastructure | Real Estate | Energy | Water | Financial Services

THE POWER OF MAGAZINES!

MAGAZINE READERSHIP
up by **0.9 crores**
- IRS Q1 2019

MAGAZINES EMERGE AS THE **SUPERHERO** AGAIN!

“All media is growing, and Print continues to grow despite the general belief that Print is declining. Readership is largely influenced by two things - literacy level and your disposable income. If you have money, then only will you buy a newspaper. Luckily in India, both those things have moved upwards.”

Ashish Bhasin, CEO - Greater South and Chairman & CEO - India, Dentsu Aegis Network and Chairman, MRUC

“I am very happy that Print is growing across all languages, and that Print titles in Digital are doing well too. The Print industry in India is still robust and effective, unlike in the Western world.”

Shashi Sinha, CEO, IPG Mediabrands, India

“What is disappointing is the fact that niche publications that serve an important segment have consistently been ignored. A different methodology must be used to ensure correct findings for such publications, but sadly both Nielsen and the MRUC Technical Committee have so far not done this.”

Hormusji Cama, CEO, Mumbai Samachar

“I am happy to see that Print numbers are growing because it also proves the point that everything is not wrong with Print, and Digital is not the only way to go forward. It justifies the argument that Print has an established sort of acceptance.”

Indranil Roy, CEO, Outlook Group

PRINT IS GROWING

No. of additional readers added
since IRS 2017

Dailies - **1.8 crores**

Magazines - **0.9 crores**

Total number of Print

Readers - **42.5 crores**



Magazine Advertising actually works!

*INDIAN READERSHIP SURVEY (IRS) 2017 : BETWEEN 2014 AND 2017, MAGAZINES SAW A 75% INCREASE WITH 38 MILLION NEW READERS.



Science@work



Prevents
Dust Buildup



Noise
Insulation



Keeps out
Rain*



Low
Maintenance



100%
Lead Free



UV
Resistant



Thermal
Insulation



Lifetime
Support

Nationwide Footprint: Service across 327+ cities | Call: 1800 102 9880 (Toll Free)

74286 91568 | SMS: WINDOW to 56161 | Email: response@fenesta.com | Visit: www.fenesta.com



COLOUR PALETTE



*Pristine White



*Silver Brush



*White Oak



*Natural Oak



*Flemish Gold



*Light Oak



*Walnut



*Teak



*Mahogany



*Dark Oak



*Black



*Champagne Gold



*Diamond Gray

*Available in uPVC & Aluminium both, **Available in uPVC, *Available in Aluminium, *Available in Internal Doors.



Keep the Outside Outside Forever



uPVC | Aluminium | Internal Door

Fenesta
Better by Design

India's No.1 Windows & Doors Brand

CONTENTS



23



33



18

09

FROM THE EDITOR'S DESK

10 **INBOX**

11 **TREND-IN**

Latest entrants under one roof

15

IDEAS

A true blue decor lovers thorough guide about everything in vogue

16 **PALETTE PLAY**

Warm and alluring, creams and browns for that country feel and magic.

22 **THING SPECIAL**

6 inspiring women bringing their fire power, experience and drive to the design arena.

28 **FEATURE**

Sharmila Patil's country feel infused home is the deserved envy of all.

32 **THING PEOPLE**

6 brands incorporating art and crafts into the very fabric of their existence.



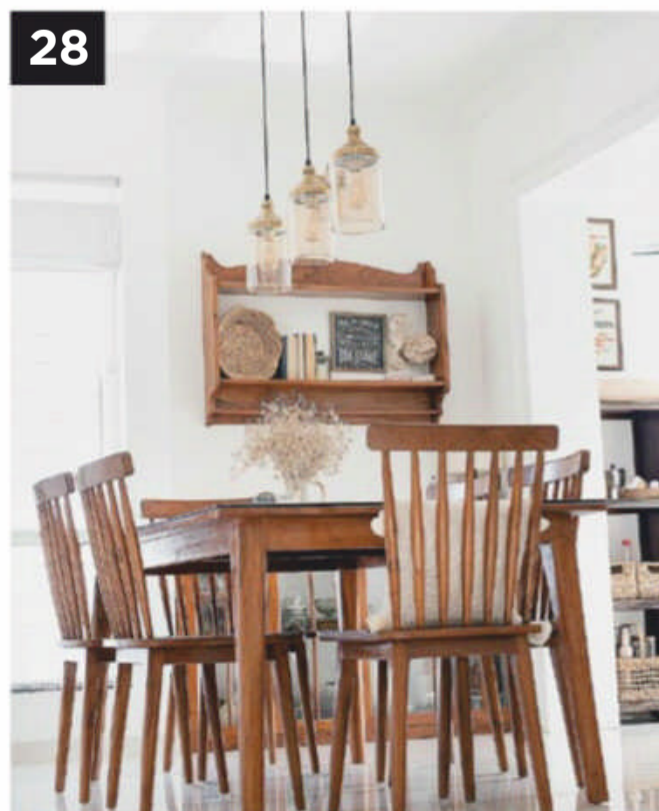
Ideal Home
and Garden



Image: Sharmila Patil, Lifestyle Blogger,
@sincerestoryteller



13



28

CONTENTS

- 36 **THING SPECIAL**
Enhance your home with wall carpets that bring warmth.

- 40 **SPECIAL FEATURE**
Create the perfect travel destination with setups that enchant with Neha Jhunjunwala.

- 44 **FEATURE**
Explore the novel possibilities with wood explored by masterful

51 LIFESTYLE

- 52 **IDEAL LIVING**
Thought Parallels' created elegant warmth for this home a picturesque home in Kerala.

- 58 **IDEAL LIVING**
Experience the tasteful vibrancy of this multi-generational home, 'The Art Loft' by The Concreate Story

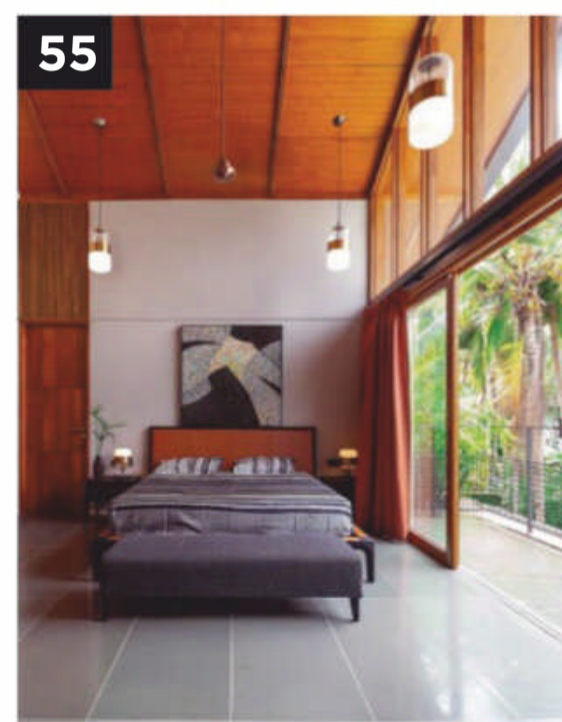
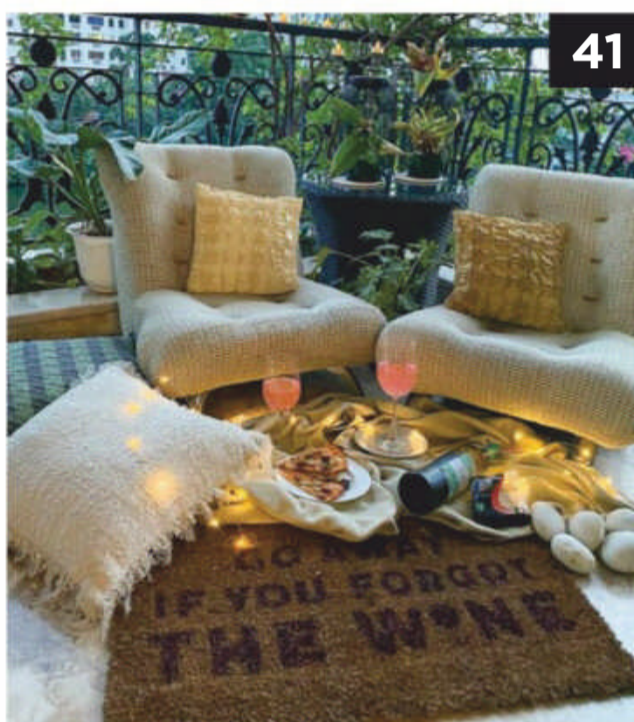
- 64 **IDEAL LIVING**
Soft elegance awaits in a home designed by Sunita Yogesh.

- 71 **CHIC SPACES**
A Sri Lankan home by Palinda Kannangara Architects that brings biophilia and architecture together.

- 76 **IDEAL GETAWAY**
Hop on this #Odishabyroad expedition with, full of cultural richness and discovery.

- 80 **GREEN HOUSE**
Garden accessories assembled together to help you enhance your green paradise.

- 82 **STORE MAP**



To **Subscribe**
turn to page

70



To subscribe online

<http://secure.nextgenpublishing.in/>

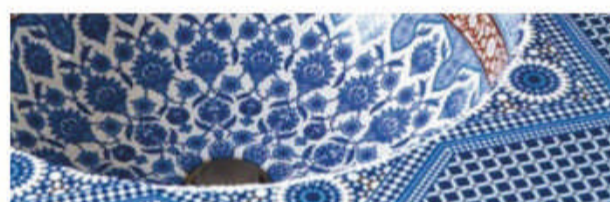


Join
us on
twitter
@idealthomeIndia



'Like'

www.facebook.com/Idealthomeandgarden

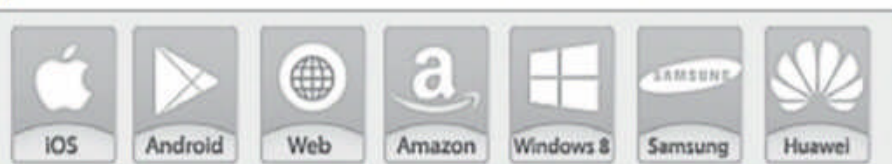


Now read your favourite
magazine wherever you go...
Available on PC... Mac... Tablet...
or any other handheld device!

www.zinio.com/idealthomeandgarden

www.magzter.com/publishers/Next-Gen-Publishing-Ltd

Digital Platform Partners



Ideal Home

Executive Editor **Ruhi Singh**

Copy Editor & Features Writer **Arushi Chaturvedi**

Stylist and Research Coordinator **Yukti Kasera**

Head Design & Production **Ravi Parmar**

Art Director **Mangesh Sawant**

Graphic Designer **Harpreet Singh**

Image Editing **Dipak Gaykar**

Production Supervisor **Dinesh Bhajnik**

Publisher **Stephen Cyril D'Lima**

General Manager - North & East **Ellora Das Gupta**

General Manager - South **Girish Shet**

Mentor & Special Advisor **Hoshang S. Billimoria**

Manager Circulation - North and East **Kapil Kaushik**

Subscriptions

Sachin Kelkar Tel: + 91 22 43525220

Email: subscriptions@nextgenpublishing.net

for Print
subscriptions

Digital
subscriptions

For Digital Subscriptions

Apple Newsstand & Magzter Queries:

help@magzter.com

Zinio Queries: <http://in.zinio.com/help/index.jsp>

EDITORIAL OFFICE

26B, Side Entrance, Ground Floor, Okhla Industrial Estate,
Phase-III, New Delhi - 110020.

Tel: +91 11 42346600/78 Fax: +91 11 42346679

Email: tihg@nextgenpublishing.net

write
to us

to
advertise

MARKETING OFFICES

Mumbai (Head Office)

105-106, Trade World, 1st Floor, B Wing, Kamala Mill Compound,
Senapati Bapat Marg, Lower Parel West, Mumbai - 400013.

Bangalore

Unit No. 509, 5th Floor 'B' Wing,
Mittal Towers, MG Road, Bangalore -560001, India
Tel: +91 80 66110116/17 Fax: +91 80 41472574

Chennai

"Cenetoph Elite"

No.5, 1st street, Teynampet, Chennai-6000018
Tel 044 421-08-421/044 421-75-421

New Delhi

26B, Side Entrance, First Floor, Okhla Industrial Estate,
Phase-III, New Delhi - 110020.
Tel: +91 11 42346600/78 Fax: +91 11 42346679

Pune

S.No.261/G.L.R.No.5, East Street,Camp,
Pune-411001
Tel/Fax: + 91 20 26830465

Territory Sales Incharge (Circulation)

Srinivas Gangula. (Hyderabad) Mob: 09000555756

Vidyasagar Gupta. (Kolkata). Mob: 09804085683

Devendra Mehta. (Ahmedabad) - Mob: 09714913234

Printed by Stephen Cyril D'Lima Next Gen Publishing Pvt. Ltd., 105-106, Trade World, 1st Floor, B Wing, Kamala Mill Compound, Senapati Bapat Marg, Lower Parel West. Mumbai - 400013. .
Published by Stephen Cyril D'Lima on behalf of Next Gen Publishing Pvt. Ltd., 105-106, Trade World, 1st Floor, B Wing, Kamala Mill Compound, Senapati Bapat Marg, Lower Parel West. Mumbai - 400013.
Printed at Kalajyothi Process Pvt. Ltd, 1-1-60/5 RTCX Roads, Hyderabad - 20.

Published at Next Gen Publishing Pvt. Ltd., 105-106, Trade World, 1st Floor, B Wing, Kamala Mill Compound, Senapati Bapat Marg, Lower Parel West. Mumbai - 400013. .

Editor Ruhi Singh





The Ideal Home

and Garden

EDITOR'S NOTE

This is the best time of the year. The nip in the air and the beautiful October sky takes me back to memories of my home. Although I know this year is different and I will not be able to see the city filled this festive season with chants and the aroma of incense sticks and blooms, the kid in me is still excited.

Well, we have always stressed on the fact that it is important for us to surround ourselves with an environment that keeps us happy at all time. For most of us, this usually brings back images of home. Also in these difficult times, we have spent so much time sitting on our favourite couch in the living room, our genuine appreciation for home knows no boundaries. And this realization has powered our vision for this issue. We started our research in different cities across countries, to dig out more than 10 homes that inspired us with either their interiors or with their architecture. Diverse and yet rooted is this story of decor, these houses provide novel approaches of their designers/architects. For example, I love how beautifully and cleverly The Concreate Team has designed the home for a traveling couple in Delhi/NCR. Each space in the house speaks about owner's love for travel and arts. Also, how many of you love wood houses? For me the beautiful architecture for such homes take one to a space of peace and quiet. There is so much warmth all around that you feel you are in a new world. We present researched approach to wood houses that also celebrate open space architecture, along with additional decor ideas that makes use of browns and creams. For some invaluable inspiration we have six brilliant women from the design world offering an insightful window into their steps towards achieving success. And speaking of inspiration, we have also decided to feature 6 brands that have innovatively incorporated Indian arts and crafts into their design, in ways that are spell-bindingly rooted in our culture.

Packed to the brim with home and decor ideas, we hope that this issue can guide you towards making your home magnificent in your own way.

Ruhi Singh

Executive Editor

r.singh@nextgenpublishing.net

LETTER OF THE MONTH

Always a favourite!

TIHG always was and will be my personal favourite as I get all my new decor home ideas from here. In the previous issue, I was particularly inspired by the Palette Play ideas which revolved around metals. The concept just changed my views on adding metals in decor, combining them with different colours and elements. What I love the most are the pages where various new products from the market are mentioned. Thanks to the entire team for inspiring me to do something new in decor everyday! **Sarita Patil, Pune**

Functional Concepts

I started my subscription for the magazine in 2017 and there's no looking back since then! All the new decor trends, home styles and vogue features are genuinely informative. The most beautiful part about the magazine is that the ideas and concepts are welcoming and friendly. The Concrete story from the September issue totally changed my views towards the material. I applied the technique in my new bedroom with raw grey ceiling and it looks awesome. Looking forward for the new issue! **Tanvi Rastogi, Kolkata**

Tips to Cherish

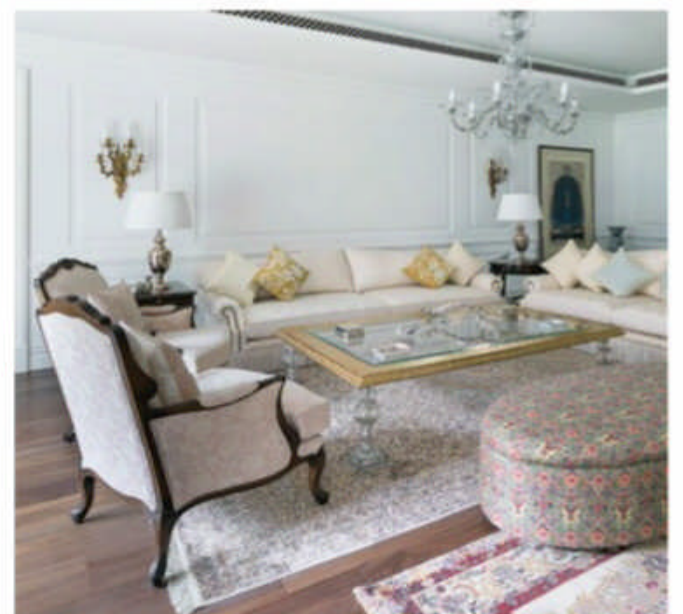
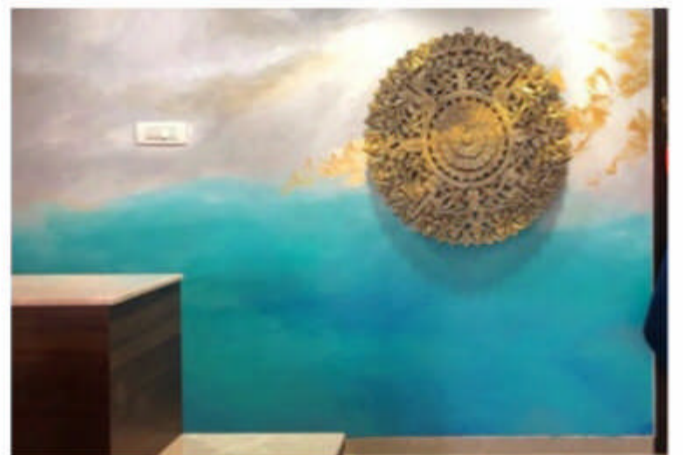
The Ideal Home and Garden website and instagram is doing wonderful work! Constantly being updated with new content helps a lot in knowing the industry and the new designers on board. Being stuck within a hectic schedule, I barely get time to check out all the stories. But the indoor plant care story from the Garden slug was surely the one which I needed. Some tips are just amazing and easy to follow. I would like the team to come up with more such stories. **Jahnvi Shah, Ahmedabad**

Ray of Hope

Not really a decor fan but this magazine has made me one for sure. I wanted to grab a magazine before a flight and ended up buying TIHG at the airport. As I was going through all the stories, I was really impressed by how the team is promoting artists who are doing amazing works related to nature. Secondly, the festive spirit was very well highlighted in the issue, giving some hope amidst this pandemic. I am hooked and really a big fan now. **Gautam Narang, Mussoorie**

Grateful Enough

The Festive issue of last month was truly mesmerizing. Every feature compelled me to ponder about the story and research, deeply done to satiate curiosity. The layout, the spread and the colours all look simply beautiful. The stories like Shopping, Decor Ideas and Editor's Pick were absolutely a treat to check out. Three cheers to the entire team who are making the stories a real success. **Gayatri Khanna, New Delhi**



OCTOBER

October is known for its festivities. So, enjoy that nip in the air and aroma of blooms and incense sticks, and since we can't go out as we used to, add festive feel to home and try your hands on delicious street foods

Luxurious Affair

Rena Germany introduces three new collections - Amalfi, Wooden and Slate for a whole new table experience. Made in porcelain, the Amalfi collection inspired by the vivid hues, rugged cliffs and cubic houses of the Amalfi coast, includes single serving tableware like Fish, Oyster, Scoop and Cube for dim sums, sushi, mini cupcakes and nuts. They double up as options to store dips and condiments. Buckets can be used to hold fries and veggies. All the products in this collection are dishwasher, oven and microwave safe
(rena-germany.com)



Old Charm

Artychoke presents the new collection 'Antique Collect' which is stimulated by everything timeworn-antiquated craftsmanship, pichwai art and carvings from eternities ago. The concept takes us back to the time by incorporating intricate details like rustic finishes, peeling paints, fragmented walls and splashes of gold. All the products are an ode to keep the old alive in the present. *(artychoke.co)*



Cook In Style

With its Accent Series, Meyer is all set to add a range that includes nonstick saucepan, fry pan, stainless steel stockpot, and many more. Not only is it stunning, with matte black finishes and a touch of gold – it is also fiercely practical and highly unique. *(meyer.com)*



Gifts Galore

Kika Tableware kicks off the 2020 festive season with its beautifully curated gift sets for a wide range of budgets that are sure to spread cheer. The brand has selected products that are best-selling, versatile and perfect for personal or corporate gifting. *(kikatableware.com)*



Keyuri Bhargava & Resheph Christian,
Co-founder, KEPH

KEPH IS ALL ABOUT... Striking, playful poetry conceptualized as a functional piece of art. We're urban storytellers looking at everyday things from the eyes of a designer, aiming to experiment with products that revolutionize all pre-defined notions of monotony and prejudices.

DESIGN FOR YOU IS... not just a problem-solving exercise, good design is a language that universally connects and impacts every individual without having to say a word.

THROUGH OUR DESIGNS... Our constant practice is to make regular products using an irregular approach. Be it in terms of exploring materials, techniques or ideologies themselves. Versatility in design language has been highly under-rated while that is what

determines our zeal towards design.

WE DRAW INSPIRATIONS FROM... For us, each product draws inspiration from something unique and is brought to life with ingenuity. At KEPH, each product is born, and not manufactured. Like a living soul, each of our products have a story to tell.

WHAT WE HAVE ALWAYS LOVED ABOUT OUR WORK... Interaction is the key to build experiences that last! We try to create products that make every eye pause, at least for a few seconds. A point of communication playfully added to every design that makes anyone connect with the product.

THE RANGE INCLUDES... Being fashion and lifestyle accessory designers; our product categories spread across stationery, home decor and fashion accessories. In 2019, we had launched our very first collection in the field of furniture design.

THE CURRENT PROJECTS... From redesigning the entire tableware collection of a heritage hotel in Ahmedabad, to developing the launch collection of ceramic home decor products for a Gurugam based Company, we are slowly trying to make our mark!

DREAM PROJECT... would be to showcase the breathtaking beauty of our traditions and heritage to the rest of the world.



For Your Greens

The new brass planters from Linchpins Design are an endearing blend of contemporary design and traditional Indian handcrafting techniques. The leaf motif enhances the overall charm and brass tone lends a regal feel to these planters. They will add vintage touch with glamour to any space. (steelpodz.in)

Perfect Choice

Kajaria Eternity's newly launched "E-Shield" Glazed Vitrified Tiles collection is specially designed for adding an extra cushion of protection for spaces. This enhanced safety would make it an ideal choice for all spaces during these tough times. The E-shield is first-of-its-kind innovative product made from special glaze with anti-microbial treatment that inhibits growth of germs like bacteria and fungus. Additionally its anti-skid property, it can be used safely in hospitals, schools, homes, offices and for other commercial applications as well, where longevity and hygiene is important. These tiles are available in size 60X60 cm with two finishes Premium Matt & Super Matt.
(kajariaceramics.com)



Shiny Silver

SR artefacts' exquisite range of photo frames, boxes, platters, pooja items and candle stands are perfect gifting solutions for festive season. With intricate detailing and beautiful design, the products are just a fine example of surrealism. (srartefacts.com)



Smart Chair

IOTA introduces Kartell "A.I. Chair" which is designed using artificial intelligence by ace designer Phillipe Starck in collaboration with USA based software company Autodesk. A.I. is the chair created for the first time ever using 100% recycled material, in which aesthetics and structural requirements remain unaltered, blending seamlessly with generative design. (iota furniture.com)

Ideas

PALETTE PLAY pg16 THING SPECIAL pg22 FEATURE pg28 THING PEOPLE pg32 THING SPECIAL pg36 THING SPECIAL pg40



Garden Trading

CREAMS & BROWNS

Warm tones, distressed finishes and subtle aesthetics, with this country special issue of TIHG, explore the colours which can totally make your decor space look cozy and homely. Take a look and get inspired!
Research: Yukti Kasera



CLOCKWISE FROM Plushious Velvet Ivory Bedspread*, **The French Bedroom Company**; Luxor, ₹1,77,118, **Magari**; Windsor Armchair in Vintage Wicker*, **Ochre At Home**; Wicker Wooden Base Sofa*, **Beyond Designs**; Karna Rug from Lene Bjerre*, **Sweetpea & Willow**
*prices on request

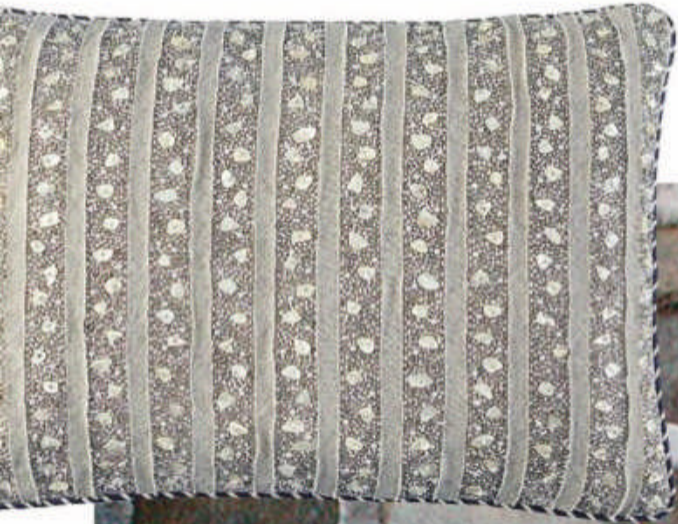


CLOCKWISE FROM TOP: Abusan from Rekhta Collection, ₹8,87,000, **Obeetee**; Cushion from Ahoy Fabric Collection in Nautical Sailor Inspired Design Motif Fabric for the Sea Lovers*, **Yorkshire Fabric Shop**; Bladen 2 Piece Sectional Sofa, ₹1,15,100, Ashley Furniture Homestore available at **Dash Square**; Portia Tealight Holders, ₹2,917 approx for set of 3, **House Raccoon**; Timeless from Ellipse Collection*, **UDC Homes**; Harry Potter Hogwarts Sorting Hat Door Mat, ₹2,216 approx, **Yellow Octopus**
*prices on request

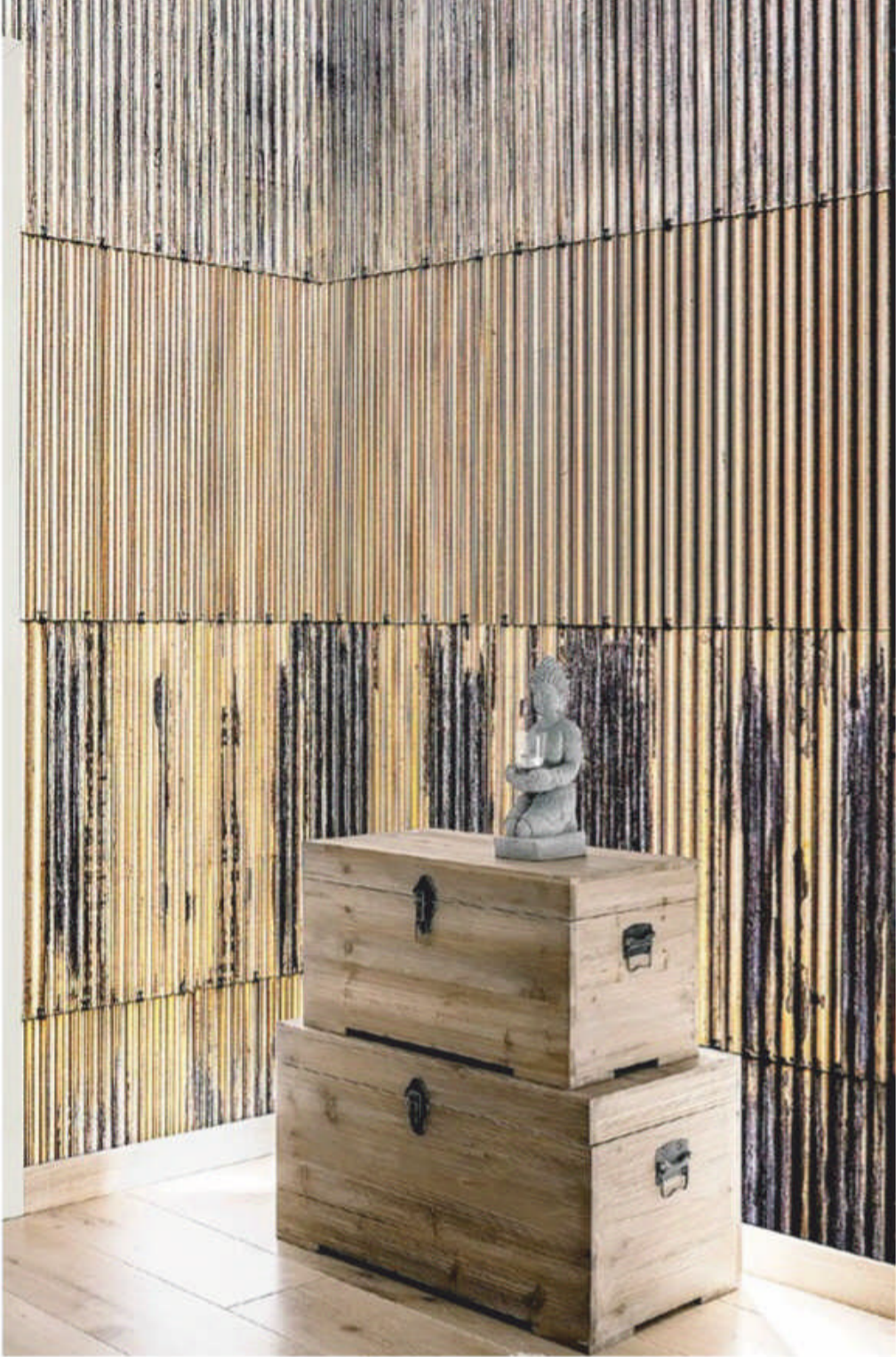
Welcome home! The phrase makes a lot of sense. Mixing and matching different brown and cream hues in decor with throws and pillows along with baskets and rugs, surely gives the home that personal touch that it needs. Tinges of these colours add sobriety to the ambience, making it more elegant and charming.



Bring in the natural source of browns with furniture pieces. From wooden chairs to rattan stools, these elements look magnificent in any set up. As country style is all about adding that essence of comfort, try ideas that can refresh your style statement and give a break to those usual decor fancies.



CLOCKWISE FROM TOP:
Capri Collection *,**Hastkala**;
Lounge Bed from Hut
Collection designed by Marco
Lavit*, **Ethimo**; Beckley
Storage Basket Large, ₹5,181
approx, **Garden Trading**;
Carved Table, ₹38,000,
Mangrove Collective;
Ginger Rug from Leathers
Collection*, **Rug'Society**;
Shivalik Dhaari Linen Cushion,
₹5,800, **Good Earth**
*prices on request



There is no need for an ultra-chic design sensibility for inculcating these shades. With minimal effort, one can make this engaging look their own. As autumn is around the corner, the style and palette is absolutely wonderful for recreating and infusing happiness into your home.



CLOCKWISE FROM TOP: Vibrations designed by Lia Stein*, **WallPepper**; Quartz Gold, ₹1,94,040, **Hands**; Blop Armchair*, **Mambo Unlimited Ideas**; Decorative Wall Baskets*, **Idyll Home**; Rovero Wood Sparrow made of Stone*, **MADS Creations**; Joan Baa Sheepskin Ivory Dressing Table Stool, ₹24,989 approx, **Lime Lace**; Lotus Floor Lamp Orange, ₹14,990, **Kalpanè**
*prices on request



A BRAND TO BE RECKONED

Work teams require motivation and bonding experiences, that aide efficiency levels and overall positivity. Be it a team activity or a company gift, sharing common experiences is a definite team builder. Mukul Vashisht, a connoisseur of innovative and artistic products has taken the gifting industry to a new height with his brand RR Gifting. The founder shares his experiences and brand plans with TIHG.



MUKUL VASHISHT DIRECTOR | RR SOLUTION

ADDRESS: D-24/396,
CHATTARPUR HILLS,
NEW DELHI 110074
MOBILE: +91-9818867921
WWW.RRGIFTING.IN



“I have always believed that the gifting industry has great potential and that’s my motivation to dive deeper in order to come up with unique and in-vogue products,” shares Mukul Vashisht who founded the brand in 2007 with sheer love and passion. RR Gifting offers a vast array of corporate gift items that you can choose for your co-workers, employees, clients and prospective clients so that they know how valuable they are to you. Mukul understands that gift choices vary from company to company, and he is not afraid of the demands. “We have a dedicated team of designers, product developers, website developers and data controllers, who are working hard on giving strength to our objective,” shares the founder. With a wide array of products to meet every clients’ needs, RR Gifting also has a full-fledged manpower back-up with expertise in different departments such as packaging and delivery as well, irrespective of the size of the order. The brand has captured the Indian gifting market with its presence in major metro cities and has a client list that includes names such as Abbot, Bosch, KIA Motors, Swatch, YKK India, Central Ministries of Defence to name a few. “As we have ambitious expansion plans even in the international market, we are looking for investors and welcoming them to grow together,” concludes a beaming Mukul who also believes in giving back to society. Under their CSR initiative, the brand provides at least 10 sets of products developed for any company to distribute to the needy. This is totally free of cost. They are also developing Corona Safety Kits at a nominal cost of Rs1,000 plus GST.

SHE BELIEVED, SO SHE DID!

Trust the process they said! Patience and perseverance binds the works of these **leading Interior Designers** in the industry who have not only curated impactful designs but also some encouraging experiences which are worth sharing. Take a look and get inspired!

Research: Yukti Kasera



YOUR DESIGN JOURNEY TILL NOW

I am the eternal student who wants to learn every day and find joy in discovery. My design journey would have been incomplete over the years without the amazing clients who gave me opportunities, the supportive colleagues, the hardworking studio and the many people that teach you at sites daily.

A MAJOR CHANGE IN DESIGN AESTHETIC OVER THE YEARS

I hope that I have grown over the years, learnt better balance in design, discovered new materials and methods of using them and acquired greater knowledge about subjects like art and design history.

DESIGN MOTTO YOU'D LIKE TO SHARE

We work on a lot of homes. When I am designing, I am

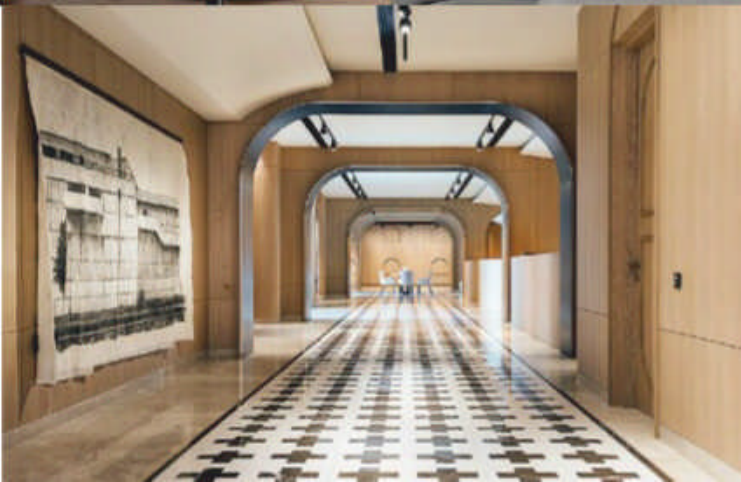
aware that I have to walk in someone else's shoes. Their space is not coloured by who I am but who they are. Second, each project is a new day. Try and bring something fresh to it.

NEXT IN THE PIPELINE

Some super exciting homes of art collectors (Be still my beating heart!). Collaborations on homes with architects we admire hugely. Racing towards completing some homes that are nearly at the finishing line. Exciting times ahead!

IRAM SULTAN

**PRINCIPAL DESIGNER
IRAM SULTAN DESIGN STUDIO**



SARAH SHAM

PRINCIPAL DESIGNER
ESSAJEES ATELIER



YOUR DESIGN JOURNEY TILL NOW

I've had a long and eventful journey up to this point, and I know I have a long way to go still. I studied Art History at Duke University in the US and Oxford University in the UK and then I came back to work at my family's fourth generation company. My family company, Essajees, specialises in high end furniture for projects across the globe, and I worked there for 5 years learning how some of the large design firms operate. I realised I was more interested in the designing of the entire space rather than individual items of furniture, so I went back to learn Interior Design at Rachna Sansad for 2 years. Its been 6 years since that, and about 40 projects later I think my journey is just about starting.

A MAJOR CHANGE IN DESIGN AESTHETIC OVER THE YEARS

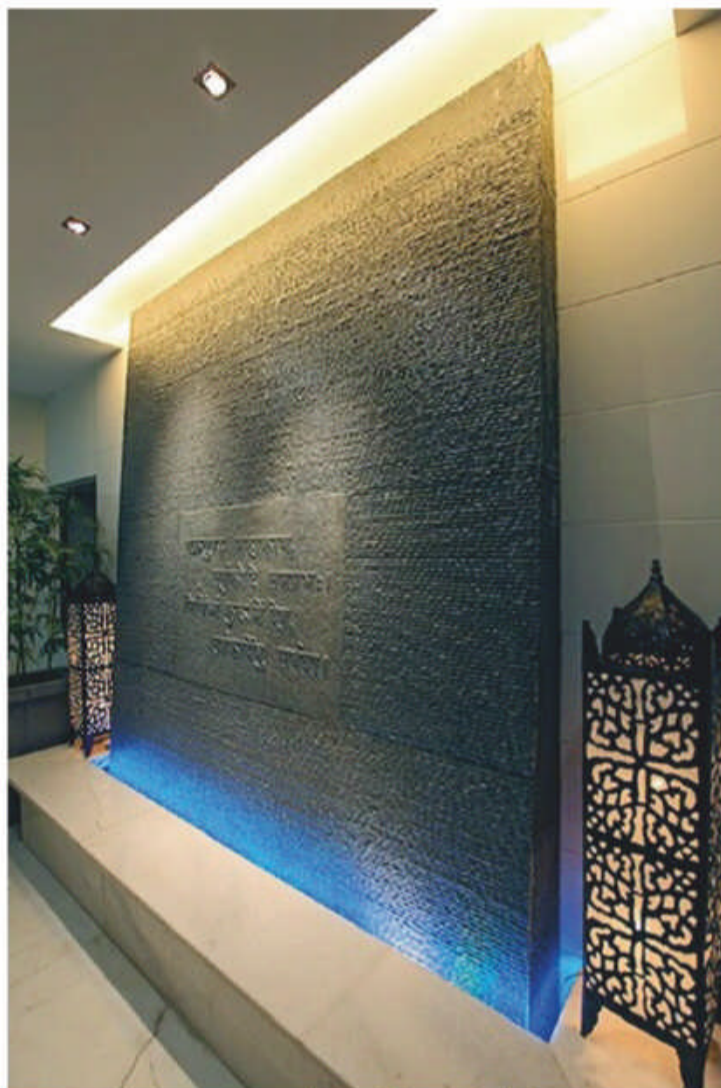
I change with every project, not every year! Every project is different and we approach it with fresh eyes.

DESIGN MOTTO YOU'D LIKE TO SHARE

God is in the details.

NEXT IN THE PIPELINE

Residences in Calcutta and Mumbai, a large corporate headquarter, holiday homes in Goa and a hotel project in California.



MINNIE BHATT

**FOUNDER & DESIGN DIRECTOR
MINNIE BHATT DESIGN**



YOUR DESIGN JOURNEY TILL NOW

Growing up in an apartment in a heritage building in the colonial neighbourhood of Opera House in south Mumbai, rooted my aesthetic sensibilities into timeless design and spaces. While my work is extremely versatile and we design modern to classic spaces, at heart I love pure materials like stone, wood and bricks. I studied interior design from the Sophia Polytechnic though it was the internship I did with Finelines designers, headed by Sunil Jasani and Sangeeta Mansharmani that actually got me involved and hooked onto this profession. After working with them for 4 years I went on to freelancing as an associate with prominent architects on residential projects for 9 years. In 2008 I started my own design studio from a tiny office in a leafy bylane of Bandra. After designing homes and offices for prominent businessmen and industrialists, I went into designing hospitality spaces, starting with Silver beach cafe and going on to designing 85 bars and restaurants nationally. My journey in design began 24 years ago and has been very enriching and fulfilling. Every new project, when reaching completion is like giving birth to a baby that you nurtured with love and attention!

A MAJOR CHANGE IN DESIGN AESTHETIC OVER THE YEARS

My aesthetic has evolved over the years and I enjoy designing eclectic spaces which are timeless. In my earlier years in design I did not experiment too much with colours, but now I'm very open to adding vibrant colours to spaces.

DESIGN MOTTO YOU'D LIKE TO SHARE

Be true to your work and all else will follow.

NEXT IN THE PIPELINE

We are presently completing two exciting projects - One is a large modern office for RADIX and the other is Burma Burma restaurant in Kolkata.



JANNAT VASI

**FOUNDER & INTERIOR DESIGNER
JANNAT VASI INTERIOR DESIGN**



YOUR DESIGN JOURNEY TILL NOW

Jannat Vasi Interior Design is an award winning multi-disciplinary boutique practice based in Mumbai, India. Founded in 2013 by me, the studio's expertise lies in interior space planning, conceptualizing, design development and execution. Honing my skills with acclaimed architects and having graduated in Interior Architecture from Raffles Singapore and Furniture Design from Pratt Design University New York with honours, I have acquired a significant coterie of clients over the years. While I continue to deliver aesthetic spaces to my clientele in interior architecture and furniture design, I plan to expand my creative business to bundled tech home solutions for the industry and product design.

A MAJOR CHANGE IN DESIGN AESTHETIC OVER THE YEARS

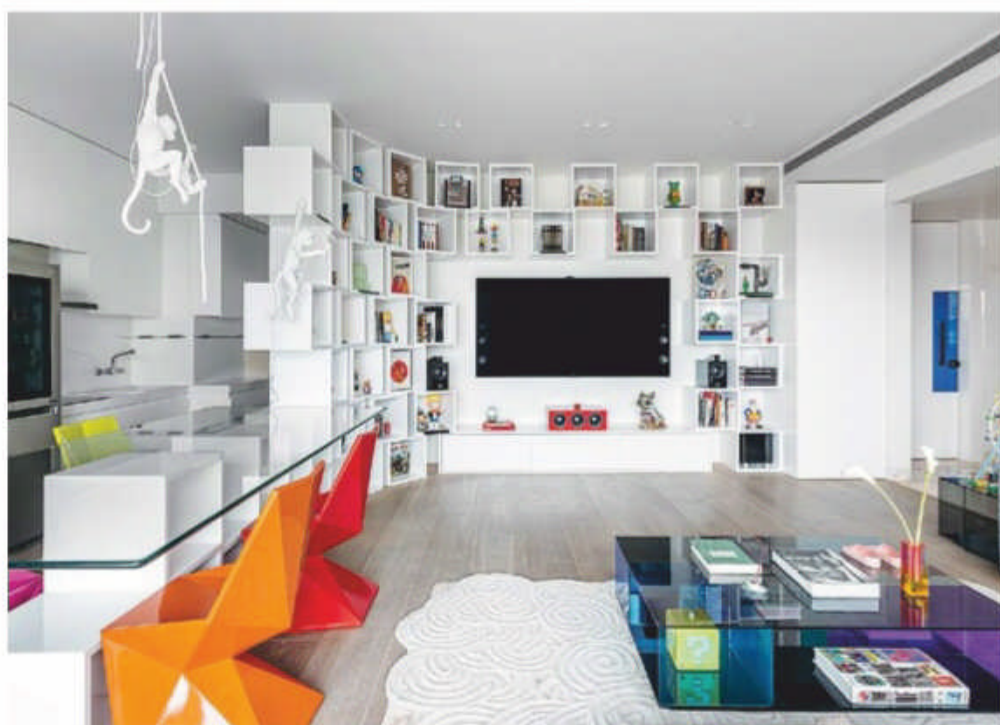
We have matured into being bold with design and colours. Just like an emergent shift in fashion today, I want to liven the conventional expression of luxury residential spaces. Using intricate details, we blend eastern principles of craftsmanship with western principles of style and colour.

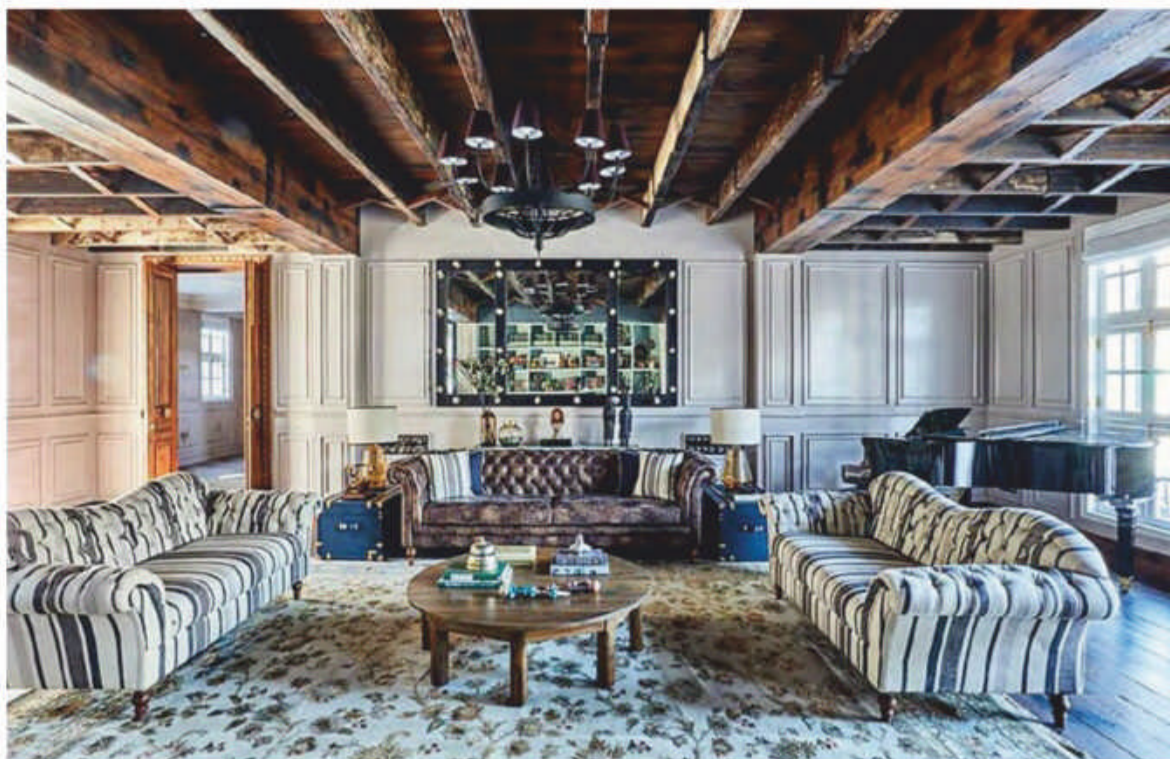
DESIGN MOTTO YOU'D LIKE TO SHARE

Design is not just what it looks like and feels like, design is how it works.

NEXT IN THE PIPELINE

We are currently designing various luxury residences at leading developer projects such as Oberoi, Rustomjee, Lodha, Kamala Mills, etc. We have a retail diamond store, a fashion boutique and a few bespoke interior works spread across the country. We are also collaborating with prestigious brands for product design and styling.





SHABNAM GUPTA

**INTERIOR DESIGNER & FOUNDER
THE ORANGE LANE & PEACOCK LIFE**

YOUR DESIGN JOURNEY TILL NOW

Born and brought up in Mumbai and coming from a creative family, my parents gave us a great deal of exposure to nature and the outdoors. I always knew I had an inclination of all things creative, but destiny really paved a path through this route. I was quite a rebel growing up. At some point my dad was quite apprehensive that I wouldn't turn out to be the lady that he thought I should be. I ended up taking Home Science but left it in the first week of college and enrolled myself in design school, not realising what it was meant to be. So, as they say, I didn't choose the design life, it chose me!

A MAJOR CHANGE IN DESIGN AESTHETIC OVER THE YEARS

I feel a major transition in our design has been that we mix match much more now. Different cultures, colours, materials and are more eclectic and world travelled in our philosophy.

DESIGN MOTTO YOU'D LIKE TO SHARE

Change is the only constant thing. Remember no one person is like another so keep the end user in mind always.

NEXT IN THE PIPELINE

Exciting projects ahead! Going digital and online with Peacock Life by Shabnam Gupta. Many more plans which will keep revealing.





RICHA BAHL

**INTERIOR DESIGNER
RICHA BAHL DESIGN STUDIO**

YOUR DESIGN JOURNEY TILL NOW

My design journey has been very interesting and it has led me to understand my field in a more evolved way. It started with growing up with influences around me as an army child and being exposed to various parts of the country while developing a good understanding of cultures. Furthermore, I started my career in advertising and that led to understanding creative sensibilities as a whole. Switching to interior designing has been easy and comfortable for me.

A MAJOR CHANGE IN DESIGN AESTHETIC OVER THE YEARS

I have learned over the years to bring together different styles to create an overall contemporary feel. The space always transports you to a different era or as if you are in some other part of the world. I love creating nostalgia through my design plans.

DESIGN MOTTO YOU'D LIKE TO SHARE

Styles come and go. But a good design is a language, not a style.

NEXT IN THE PIPELINE

Reviving heritage properties- A project which is very close to my heart as I firstly love that architecture and also, its preservation of history.



FOR A DREAMY Country Home Feel

An artist, a creator and a decor blogger Sharmila Patil believes that the classic farmhouse has stood the test of time and evolved into today's mid-century modern, which is welcoming, comfortable, minimal and timelessly refreshing.

Words: Sharmila Patil



I am someone who is driven by enormous amounts of research and passion. As this was our first forever home, we were super excited and knew that we wanted to do everything ourselves. When we started working on a moodboard for the home we eventually realized everything we had liked had an old world vintage charm to it. It was by no means Indian. It was more 'Mid Century Modern' meets 'Farmhouse Chic'. By that I mean it was vintage, white, rustic and rough around the edges like the farmhouse style of decor but at the same time it was minimal with straight lines and void of patterns which made it more mid century modern. This was exactly what we were looking for, it fit us and our personalities perfectly, so we kinda took that as our guideline and went about creating our dream home. For me home is all about the people in it. It is more about how the space feels rather than how it looks and @sincerestoryteller is my little way of sharing the joy of a simple elegant space, one that tells the story of a home filled with a toddler, love, friends, food, family and truck loads of laughter. So come join us and share in the joy. I am putting together my two cents about how to achieve the farmhouse chic look to your home without breaking the bank.

COMFORT & PRACTICALITY

Furnishing and accessories should be warm and inviting and more importantly usable, not just for show. They should welcome you into the room, and nothing should be too precious to use regularly. The room should look like it evolved over time.

A NEUTRAL PALETTE

Choose a neutral palette to make the room appear fresh and open. Cool or warm neutrals such as cream, beige, silver and grey work well and balance the natural elements. Keep patterns simple and contemporary and bring depth to the neutral palette with a variety of textures.





REFURBISH & REUSE

Mix and match furniture, especially vintage and new. Vintage furniture has authenticity and probably a story behind it whereas new furniture have practicality and comfort. Instead of going furniture shopping in stores and malls try your grandparents basements and neighbours garage. Nothing and I mean NOTHING says old world charm like actual old furniture. No matter how much you stain it.

NATURAL ELEMENTS

Mix and match furniture, especially vintage and new. Vintage furniture has authenticity and probably a story behind it whereas new furniture have practicality and comfort. Instead of going furniture shopping in stores and malls try your grandparents basements and neighbours garage. Nothing and I mean NOTHING says old world charm like actual old furniture. No matter how much you stain it.

LESS IS MORE

You want to create a cozy, not cluttered, room, so keep accessories to a minimum and the room flow open.

GREENERY

And lastly to make it live up to its name make sure to include lots of greens whether indoor or outdoor in your home.



Kitchen Care

Equipped with the beauty and well thought-out functionality of Nirali BG Kitchen Sinks, every corner of your cherished kitchen can shine gloriously.

Every home is different, with different structures and owner requirements that it seeks to fulfill with every addition and modification. And Nirali BG kitchen sinks, with their wide range of stainless steel sinks, manages to do just that by banking on its over 30 years of experience in the sector.

With changing needs and times, Nirali BG under the leadership of their Chairman B.R. Gada and Managing Director Sarang Gada, is constantly modifying their approach and product for the optimum satisfaction of all their customers. With a clientele that includes distinguished builders, architects and designers, the brand's in-house team works to provide innovative solutions for ever-evolving requirements of people. One chief area of focus is the sink size, that varies as per the requirements of each potential customer. Aesthetic variety is also maintained with glossy and satin finishes offered. But most significant among these varieties is the anti-scratch finish that would insure the longevity and preservation of its visual integrity. But above all these is the considerate price range that the brand offers, that effectively manages to cater to a wide variety of people.

The brand has additionally launched a new initiative, 'Nirali BG Designer Gallery' in various cities of India, in order to gain a better understanding of the customer's likes, requirements and limitations. And armed with this knowledge, Nirali BG's kitchen sinks are able to serve their already loyal and vast customer base with quality performance that impresses and evolves. And this has become the reason for the favour and footing that the brand deservedly with all.



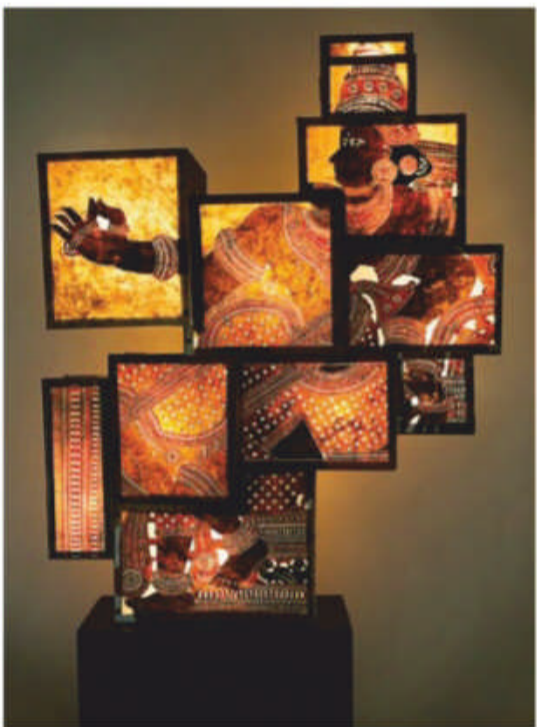
Crafted Richness

Bountiful and diverse, Indian crafts are the result of the individualized expression of creativity from the people of different regions, that have been honed and perfected over hundreds of years. TIHG brings to you 6 contemporary brands that are breathing new life into these age-old crafts by changing their context and yet retaining their vibrant and earthy charm.

Impressions: Arushi Chaturvedi

Sarthak Sengupta & Sahil Bagga (Co-Founders, Sarthak Sahil Design Co)

With the aim of narrating human stories of artisans and craftspeople, Sahil and Sarthak created their company where almost all products are handmade by master artisans who channelize their skills and learning passed down by generations of practice. They highlight that unlike common perception “the artisans we work with function like modern day industrial designers. They pay attention to every detail, optimize production by proposing creative ideas and strongly believe in saving resources and following sustainable processes.” Guided by their skills, Sarthak and Sahil endeavour to use re-contextualization and reinterpretation to keep these arts and crafts meaningful for the contemporary user.



Catherine Trotman (Creative Head of Home and Lifestyle, Fabindia)

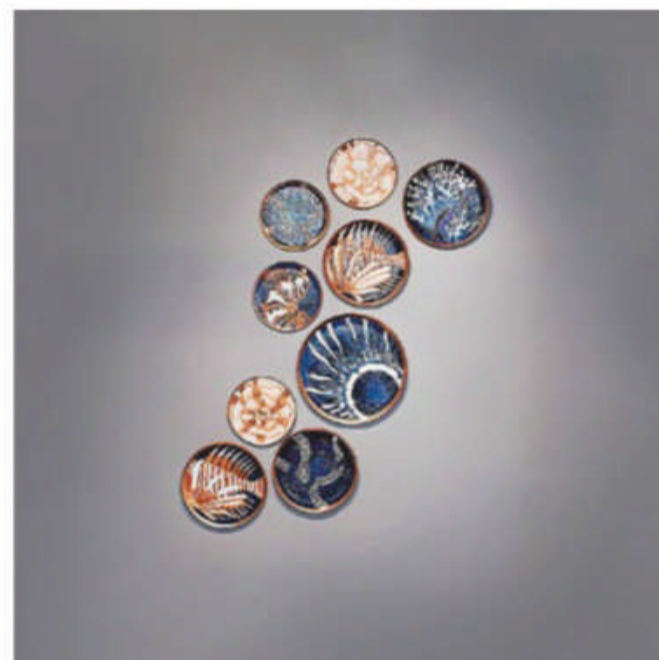
Fabindia has a 60 year old heritage based on the incredible craft base of India. Giving insight behind the reason for this, Catherine points out “traditional craft underpins nearly every decision we make around a product and is an integral part of the DNA of the brand.” And integral to this is the relationship that they have formed with artists, who have taught them what is immeasurable. For her it is “intention”. It is the deep personal connection that the artisans have with their craft that a book can never convey. Many of the craft processes are very repetitive and rhythmic, bringing with them a meditative quality which can only be experienced first hand.”





Shibani Jain (Founder and CEO, Baaya Design)

For Shibani, the motivation for design is the love for crafts which got anchored during her studies at NID, Ahmedabad, but she vividly remembers her visit to the Jabalpur rocks as a child was when crafts first called out to her. She eventually left her corporate job in digital media, to start working in the interior design space to make innovations to artisan skills that uplift both the artisans and their art forms. She reveals, “this is why I love being in the handicrafts space - new discoveries and journeys await all the time. There is learning, challenges, creativity and the satisfaction of doing something important with the incredible skills that our artisans possess.”



Parth Parikh (Founder and Creative Director, Design Clinic India)

Wanting to create contemporary products that incorporate Indian art, crafts and local scenarios, Parth feels grateful to have the rich reservoir of priceless handmade crafts in India. Cognizant of the importance of craftspeople to this process, he states, “books are

actually a source of reference which can teach you the basics about anything in particular but the real knowledge is when you sit initially with the craftsman and talk to him face to face and also understand the tools which he uses to create a beautiful piece of story.” And this is what fuels his designs and their beauty forward.





Geetanjali Kasliwal and Ayush Kasliwal (Co-founders, AnanTaya)

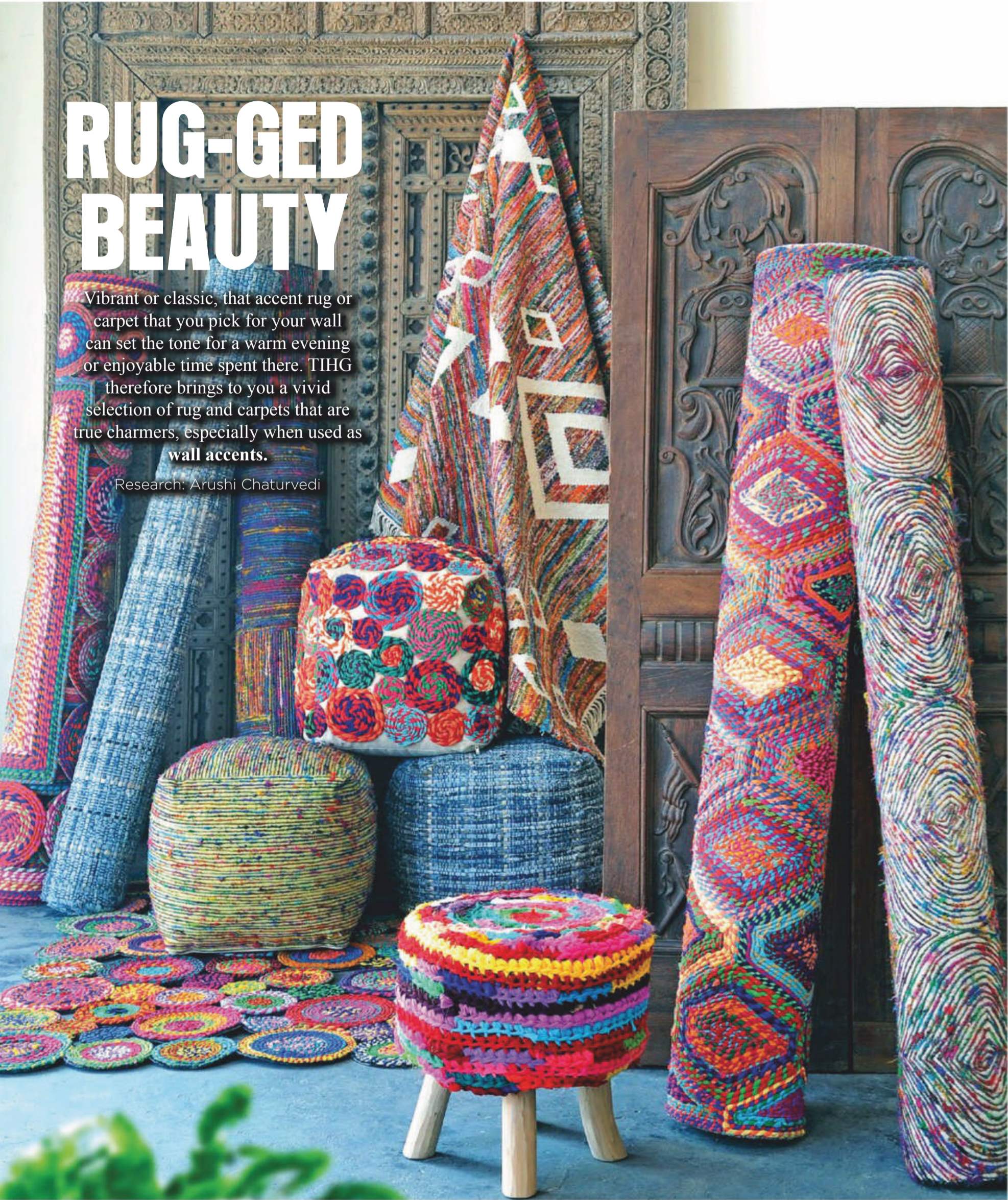
Geetajali and Ayush Kasliwal feel that India is an endless treasure trove of inspiration and yet, unfortunately, integrating tradition into design hasn't been extensively utilized. Therefore they made sure that the principle behind the brand would be to remain rooted in humility, while retaining a deep appreciation for an aesthetic that is truly Indian. They proudly point out that "we live in an incredible country, and crafts of some form or the other are practices throughout its expanse. As a design entrepreneur it is evidently the lowest hanging fruit, and also one that draws upon our culture, making it familiar to all of us. The bridge between design and craft is all that was needed to be built."



Smita Thapar and Moksh Thapar (Co-Founders, STUDIO Smitamoksh)

Smita and Moksh are clear that they design by using the intelligence of nature with technology, making it their mission to tap into traditional wisdom and celebrate it in today's context. Crafts to them are the ultimate inspiration as "they evolve through ages and through constant interaction with people, society, culture, geography, weather and many other factors, just like the stones in the path of a river. Similarly, a craft takes its perfect shape over the time through repeated interaction with factors influencing it and finally it takes a shape which is perfect sync with surrounding environments and users."





RUG-GED BEAUTY

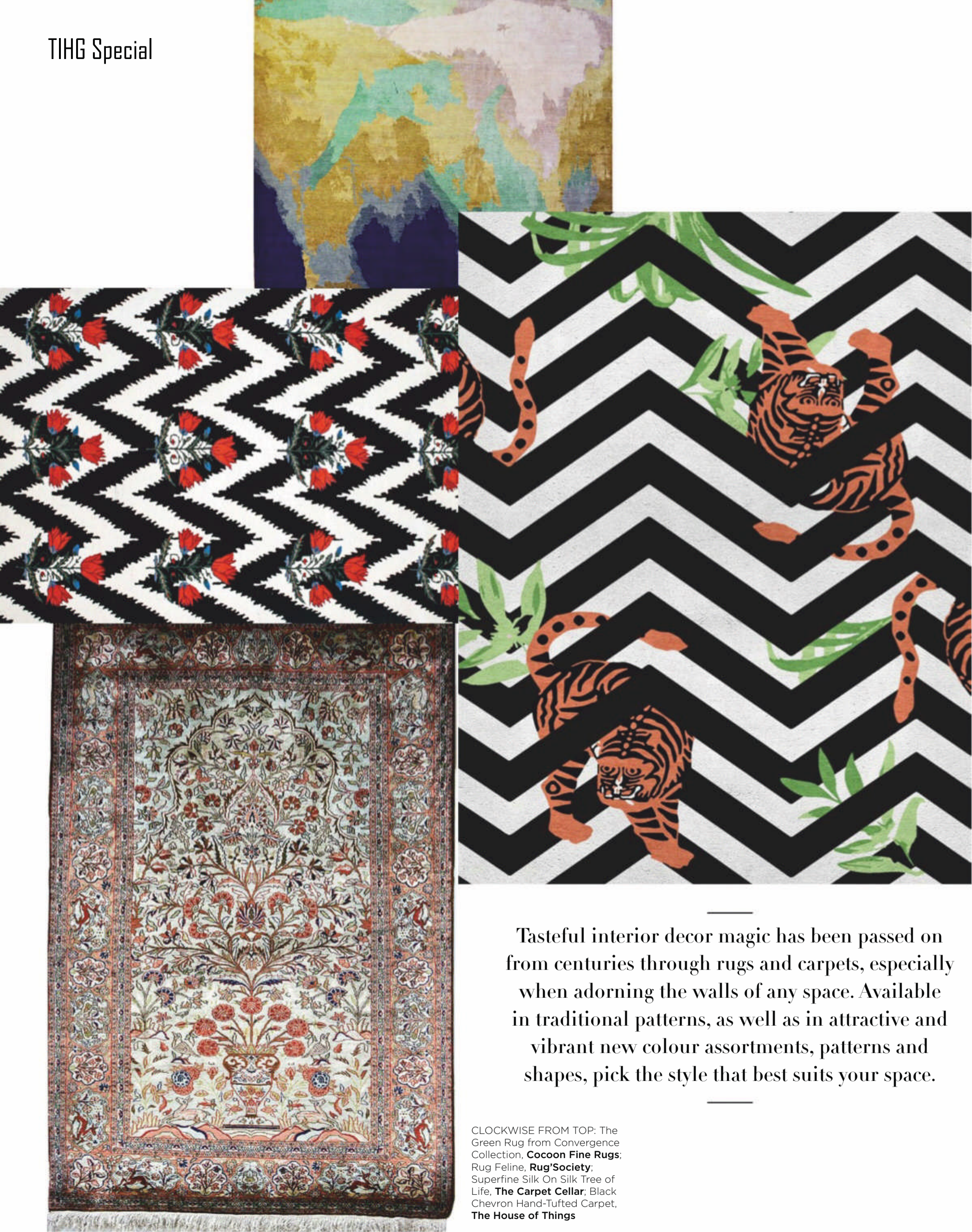
Vibrant or classic, that accent rug or carpet that you pick for your wall can set the tone for a warm evening or enjoyable time spent there. TIHG therefore brings to you a vivid selection of rug and carpets that are true charmers, especially when used as **wall accents.**

Research: Arushi Chaturvedi



CLOCKWISE FROM TOP: 3D Chevron Rug, **Little Looms**, Jaipur Handknotted Saree Silk Rug, **Kaati Carpets**; Persian Royal Kurk Kashan, **The Carpet Cellar**; Severin Rug (Wool), Makris Rug (Wool), Searbert Rug, Perkin Rug (Wool), Salford Rug, Hartlyn Rug (Wool), **The Rug Republic**; Tufted Wall Hanging - Brown, **Rug Berry**





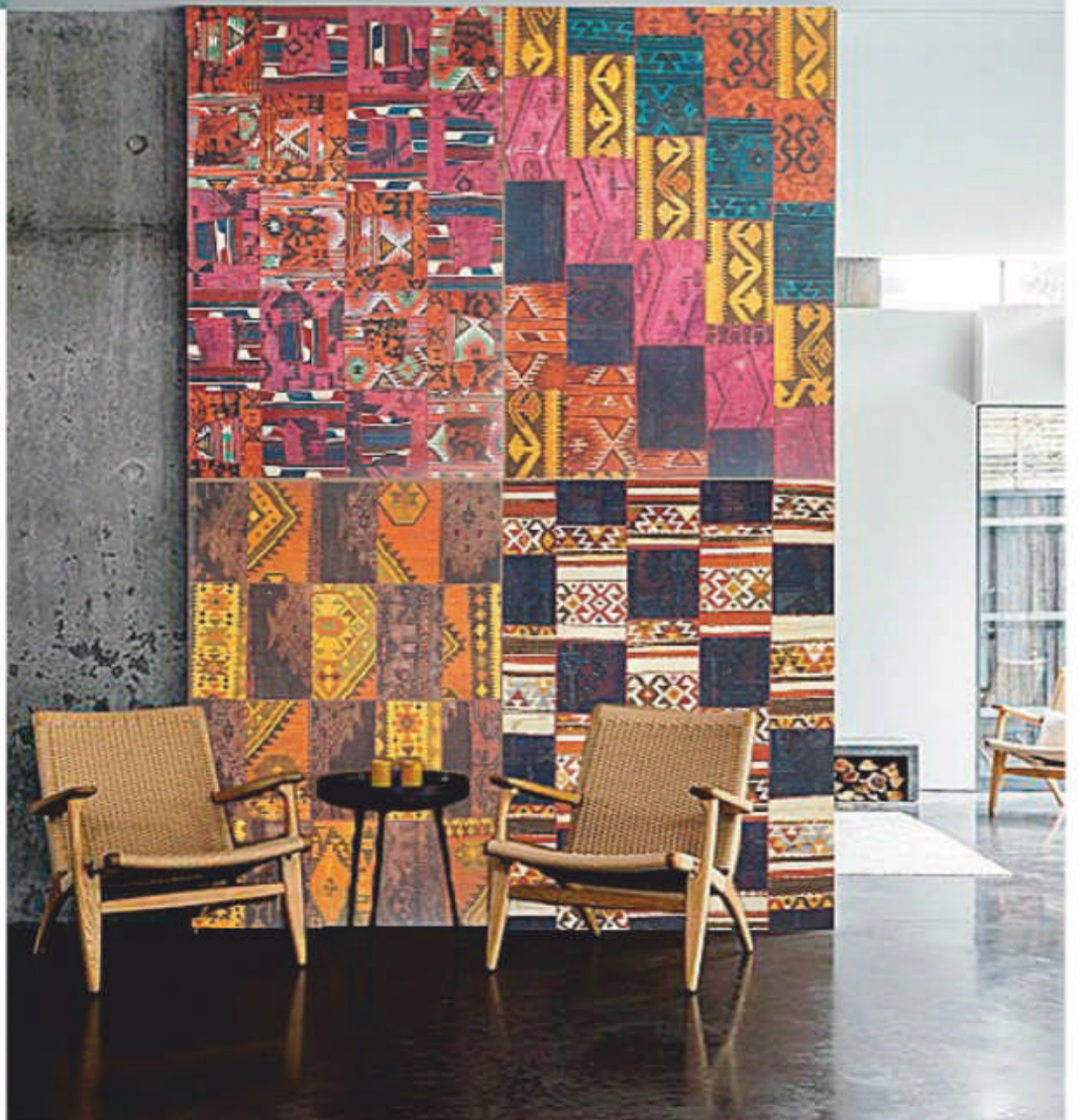
Tasteful interior decor magic has been passed on from centuries through rugs and carpets, especially when adorning the walls of any space. Available in traditional patterns, as well as in attractive and vibrant new colour assortments, patterns and shapes, pick the style that best suits your space.

CLOCKWISE FROM TOP: The Green Rug from Convergence Collection, **Cocoon Fine Rugs**; Rug Feline, **Rug'Society**; Superfine Silk On Silk Tree of Life, **The Carpet Cellar**; Black Chevron Hand-Tufted Carpet, **The House of Things**

Wall carpets take up a lot of visual space, so be sure to pick one that does not add unflattering weight to your interiors. Think and then make that purchase!



CLOCKWISE FROM TOP:
Indonesia Multi, **Hands**;
Anatolian Rug, **The Rugs**
Story; Colorburst Shaggy
Kilim and Purple Haze Shaggy
Kilim, **Rugs & Hugs**; Antique
Samarkhand Chinese Border
Carpet, **Baro**





HOME OF A TRAVELER

Till we cannot go out and see the world, let us create moments by bringing the world into our home. At least at the end of 2020, we cannot say we didn't travel anywhere

Words: Neha Jhunhunwala

It is said that you don't know the value of something unless it is lost! And this pandemic showed us how true it is! For those of you who know me and now for those who don't know, I was on a flight traveling all across the world and all across India, every 15 days. #lifelessons- don't take things for granted! How much I miss it now!

Well, since we cannot travel, and we miss it so much (I can say this with confidence for every one of us), why not bring your travels to your Home? Now is the time to bring the vibes and sensations of your favourite travel destinations into your Homes and get transported to different parts of the World.



WINE IN ITALY

If there is any place that just spurs out romance and elegance, it has to be Italy. Hanging plants along candle lit streets, the lakes with greenery all around, the neutral colours used everywhere, and the dimly-lit pebbled bylanes which encompasses the feeling of Italy for me (not to forget the pizzas and the most well-dressed men and women). A glass of Rose wine and this ambience in my verandah and I am set for the weekend!

Arrivederci Italia! Mi Manchi.

TEA- TIME IN SPAIN

Flowers, greenery, colourful décor- a vibrancy, a festive feel, and a party vibe all around- that's what describes my experiences in Spain. It's a space you just feel invigorated and rejuvenated in. The tea party exuberated all these feelings and transported me to the land of Andalusia and Seville. Using colourful cushions, flowers set up in different vases and mugs, a family heirloom colourful tea set, and of course my plants- all set up the mood and greeted me with a widely grinning Hola! And yes, my heart did do a Flamingo dance.



Now read your favourite magazine wherever you go...
Available on PC... Mac... Tablet... or any other handheld device!



Available on

Digital Platform Partners

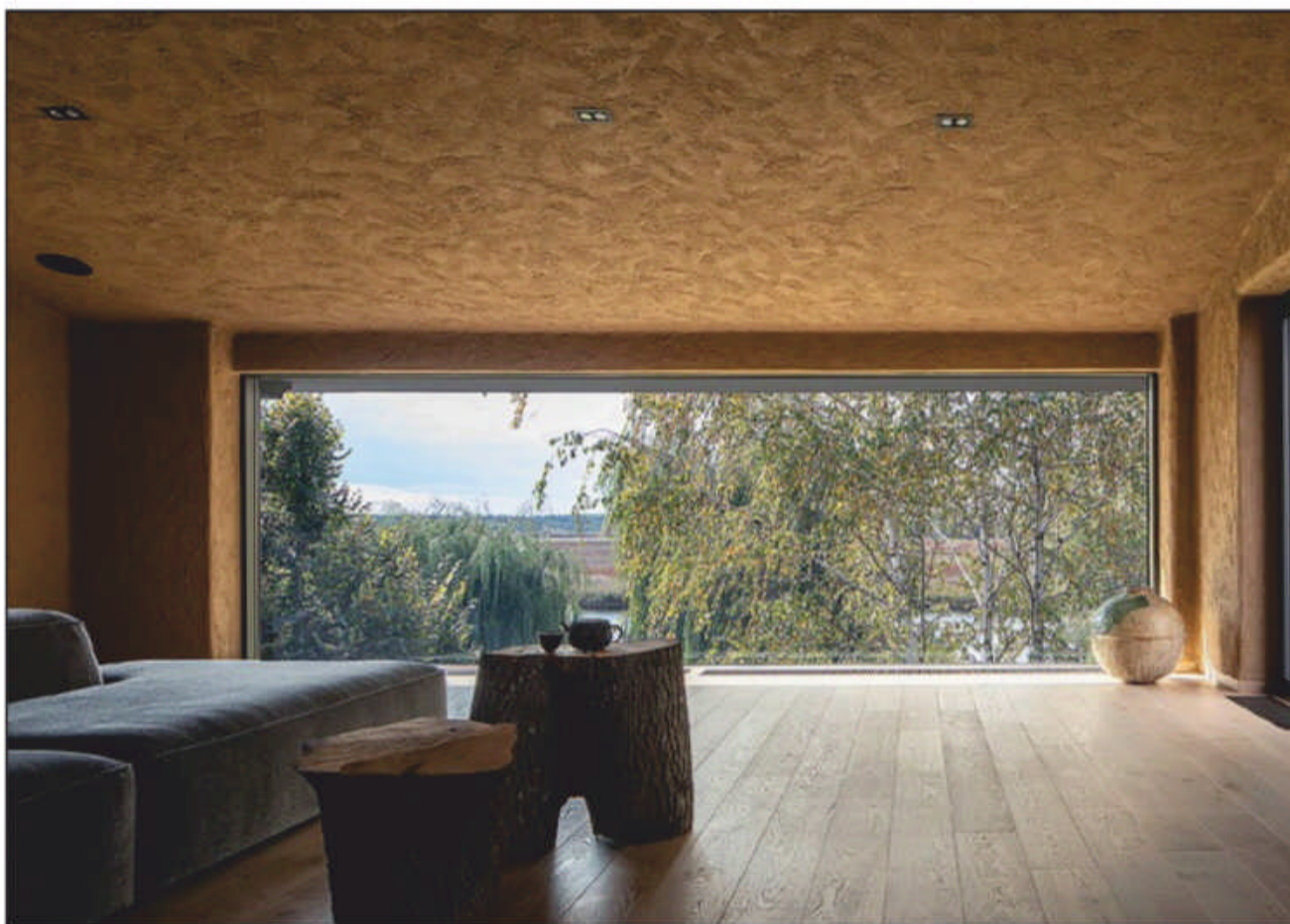


www.zinio.com/motherandbaby

INTO THE WOODS!

Denoted as one of the noblest building materials, wood in interiors has an undeniable overall contribution towards its aesthetics and feel. With it's significant prevalence since previous centuries, let's check out the expanded possibilities of the material with these contemporary and spectacular projects.

Research: Yukti Kasera



PROJECT NAME: UKRAINIAN WABI SABI. 5.0 BY SERGEY MAKHNO ARCHITECTS | **AREA:** 200 SQ.M | **LOCATION:** KOZYN, KYIV. | **YEAR:** 2019 **TEAM:** SERGEY MAKHNO, SERHII FILONCHUK, OLHA SOBCHYSHYNA, ILLIA TOVSTONOG, IHOR TYKHYI | **PHOTOGRAPHY:** SERHII KADULIN

A balance between emptiness and comfort, nature and technology, passion and zen, is what this impeccable project exudes. Dipped in the aesthetics of natural elements, the space is a perfect symbiosis of flamboyance and glory. The planning of the apartment is kept as simple as possible. The walls of the living room are in clay, the ceiling is in clay and wood, one of the four walls is a window. Japanese wabi-sabi way of life is a peaceful joy to accept the full life circle and hence this guides the perfection of the design. It is beautiful to see the Ashwood on the floor, which is warmed with granny's carpets, that this family has preserved both as spiritual traditions and material.



WHAT IS AVAXHOME?

AVAXHOME-

the biggest Internet portal,
providing you various content:
brand new books, trending movies,
fresh magazines, hot games,
recent software, latest music releases.

Unlimited satisfaction one low price

Cheap constant access to piping hot media

Protect your downloadings from Big brother

Safer, than torrent-trackers

18 years of seamless operation and our users' satisfaction

All languages

Brand new content

One site



AVXLIVE • ICU

AvaxHome - Your End Place

We have everything for all of your needs. Just open <https://avxlive.icu>



MASTERPLAN: STUDIO JENQUEL TOGETHER WITH THE OWNER AND LANDSCAPER (MENNO LANDSTRA) | **LOCATION:** SAYAN (OUTSKIRTS OF UBUD, BALI) |
ARCHITECTURAL DESIGN: STUDIO JENQUEL | **INTERIOR DESIGN:** STUDIO JENQUEL IN COLLABORATION WITH THE OWNER | **DECORATION AND STYLING:** OWNER |
CUSTOM FURNITURE & ROOF CONSTRUCTION: STUDIO JENQUEL | **LANDSCAPING:** MENNO LANDSTRA WITH OWNER | **GENERAL CONTRACTING, CIVIL WORKS AND CONSTRUCTION SUPERVISION:** WAYAN ENGGAL | **OTHER WOODWORKS:** KALPATARU | **PHOTOGRAPHY:** TOMMASO RIVA

Umah Hati (Tranquil Heart) is an indulging and humble private villa, also commencing a subtle audacious hybrid which bridges the West and the East together. It seamlessly blends with the environment, giving it the feeling of a large cabin. There is no doubt about the fact that the designers have used the best ways to highlight natural delight. This vernacular project displays the local materials in the best possible style. Indonesian ironwood has been used for the roof and structure. Rafters are made of Bankirai wood, sanded smooth and left natural. Woven rattan from Sulawesi beautifully complements the interior, while ironwood shingles secure the roof cover. The most stunning part of the plan is a garden space discovered by the workers, hidden along the river's edge which is furnished with a wooden platform.





PROJECT NAME: THE BROWN HOUSE BY THE DRAWING STUDIO | **AREA:** 157.93 SQ. M APPROX | **LOCATION:** MUMBAI | **LEAD ARCHITECT:** DEEPSHIKHA JAISWAL RAUT | **PHOTOGRAPHY:** SACHIN POWLE

As Frank Lloyd Wright puts it “Wood is universally beautiful to man. It’s the most humanly intimate of all materials.” Indeed, The Brown House sums up all unfettered nuances of the material. A beautiful combination of old Burma teak and surreal organic hues brings warmth and character to the space, making it more intimate, larger and tighter. As the beauty of all the natural elements lies in it’s raw form, every wood is different that takes it’s own course. There is no doubt that the entire house leaves no stone unturned in asserting wood to be the best choice in terms of the base material. The material forms a tactile experience for design which makes it evergreen.



Lifestyle

IDEAL LIVING pg52 CHIC SPACES pg71 IDEAL GETAWAY pg76 GREEN HOUSE pg80



MY GREEN SYMPHONY

Welcome to the undeniable beauty that celebrates its surroundings by addressing the needs of the present, and respectfully curating through traditions with a contemporary flair, to please the warmth yearning soul with charming coastal vibes.

Research: Arushi Chaturvedi





Covering a wide expanse of 10,000 sqft, this Kerala home carefully balances the warmth of a traditional Kerala home while still granting grandeur that is both fresh and inviting. The topology of the abode, the owner's specific wishes and the brilliant application of a customized design vision, have all amalgamated to create a home where each space is a picture perfect wonder.

The lush green surroundings of Kerala and its enriched traditions demanded a home that brings out the best of these two, while being intrinsically innovative in its expressed approach. And Shabna Nikhil and Nikhil Mohan of Thought Parallels have achieved this feat with masterful aplomb. The structure is successfully cast as a indelible part of the lush surroundings themselves, that seeks to enhance

the experience of all that the green environment has to offer, rather than being a hindrance to it. And the visual aesthetics, incorporating earthy tones while granting visual access to the surrounding greenery, create the perfect symphony together that sings out amidst this heavenly setting.

The design brief itself by the family, detailed the need to connect back to their roots and upbringing, using a design that was aided by an immersive understanding of this magnificent landscape. Completely different from any concrete jungle, the structure had to be something that fits the incredible scenery like an organic glove. For this the designers chose a style that paid tribute to the classic soul within casual modernism. Traditions too form a huge part of the design articulation here, with the traditional Kerala home, 'tharavadu', being at its very center. Therefore the materials utilized

Home Profile:

The Owners: The Ayani Family

Location: Payyoli, Kerala

Room: Formal living-dining space, family living-dining space, five bedrooms, kitchen and a courtyard.

Area: 10,000 sqft

Designers: Shabna Nikhil and Nikhil Mohan, Thought Parallels

Images: Ashik Aseem






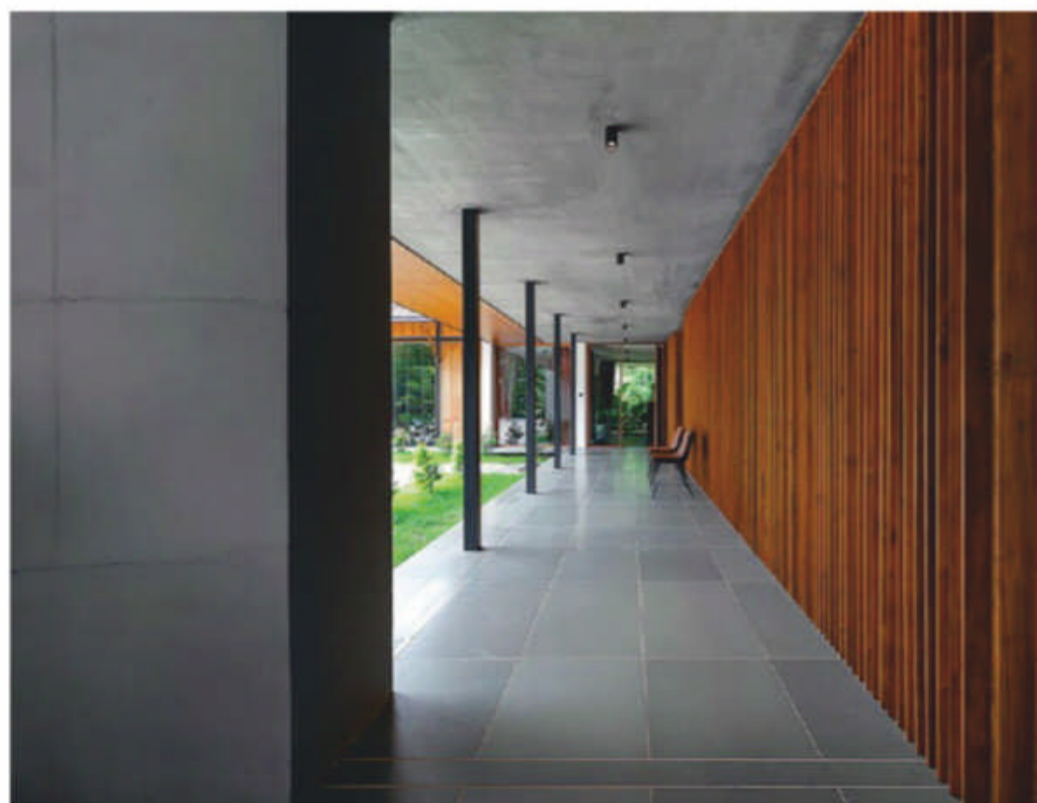
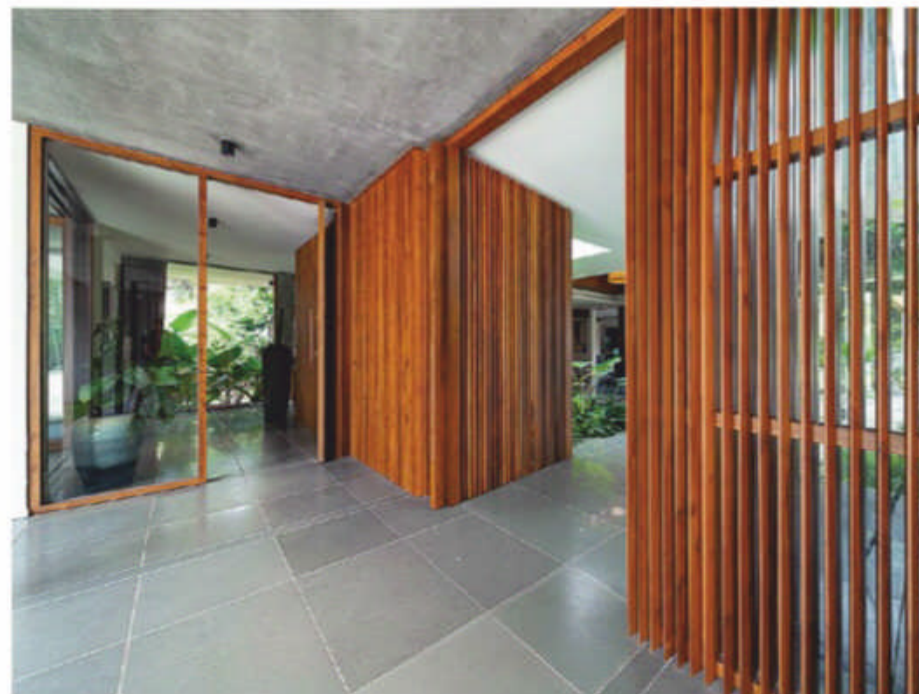
The expansive space allowed the designers to bring to life a beautiful design vision, where the masterful and tempered utilisation of wood gives it an earthy glamour that is truly inviting.



here, Kotah stone and overlay Indian Teak Wood, are reminiscent of the wonder and earthy whimsy of local homes. These materials in addition to being tried and tested for the conditions of the region, also are cohesive to the look and feel of the surroundings. And it is their innovative application here, along with the melding in of modern sensibility and application, that makes this home magnificent.

Just a cursory glance at the very interiors of this home convey a simplicity, that is balanced by the warm plushness of the insides. The exteriors have deliberately been kept white so as to act as a soothing visual addition to the natural beauty of its surroundings. The interiors however have organic richness to them, that is tempered to give a feeling of space and openness. The social and private spaces have been willfully kept separate as per the client's brief, evident in the separate living-dining areas for formal entertaining and family dinners. The warmth using wood and vibrancy using fresh colours make this home a visual marvel that would aide the family to grow within it.

Remarkably, a biophilic approach rooted in traditional design has been impeccably utilized here. Renewable sources of energy conservation and consumption have been employed, that help in making sure that these cherished green surroundings do not perish. In addition to solar panels, the ample peculation of sunlight and natural breeze, organically reduces the need for artificial enhancements. The approach highlights a holistic design approach that looks at not just the superficial aspects, but also soulfully perceives the bigger picture for the magical sustenance of the family, as well as of the environment. 





HANDMADE WITH LOVE

Designed for a family consisting of three generations, the home designed by **Nishtha Duggal and Rohan Gera of The Concreate Story** is a medley of culture, colour, and bespoke experiences.

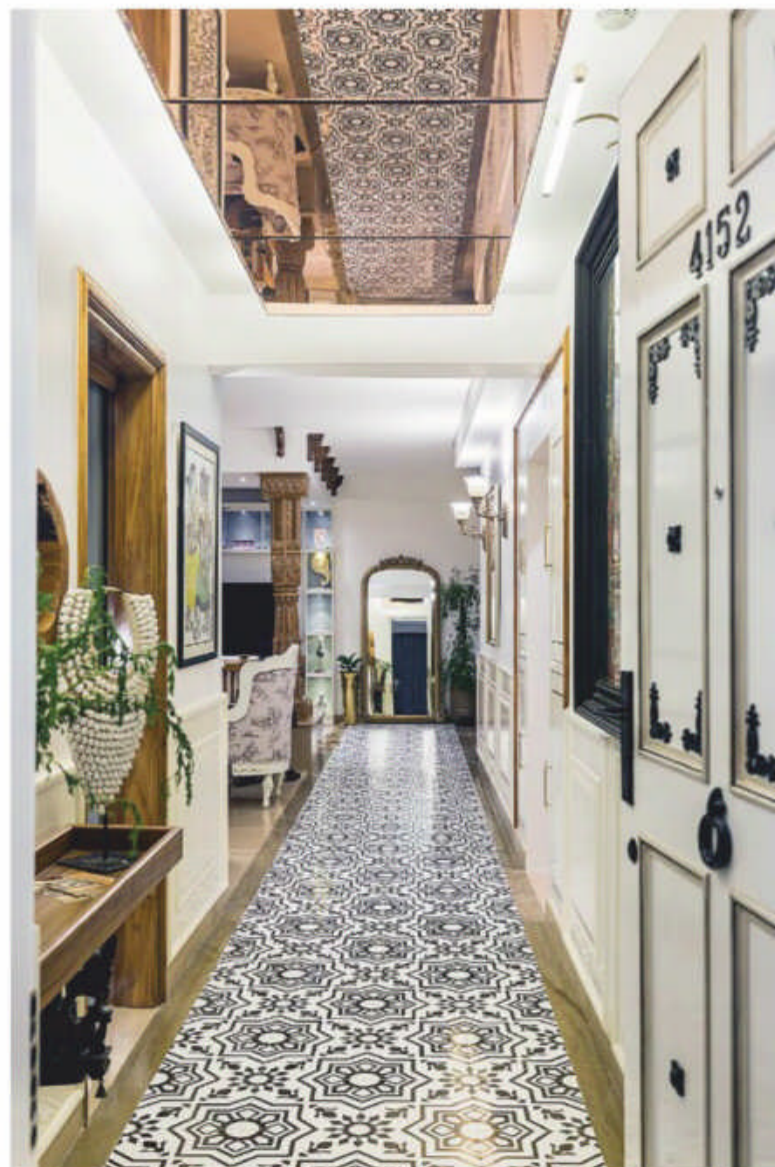
Words: Nishtha Duggal | Images: Rohan Dayal

Spread across 3000 sq ft and on the 15th floor of a plush housing society in Noida, the apartment sits amidst a lush green forest and overlooks an ancient ashram on one side and the unending expressway on the other. Every house has its own narrative, and in our case it's a story. A story we hear from our clients in the form of wondrous aspirations, ideas and dreams. We, as designers, then scribble on a 1000 pages to present to them, their "just one." The process often starts as early as the first visit. And here the owner being an avid art collector had a strong vision for their home and emphasized on all things handmade with a tropical feel. This is how "The Art Loft" was brought to life!

The Study Room

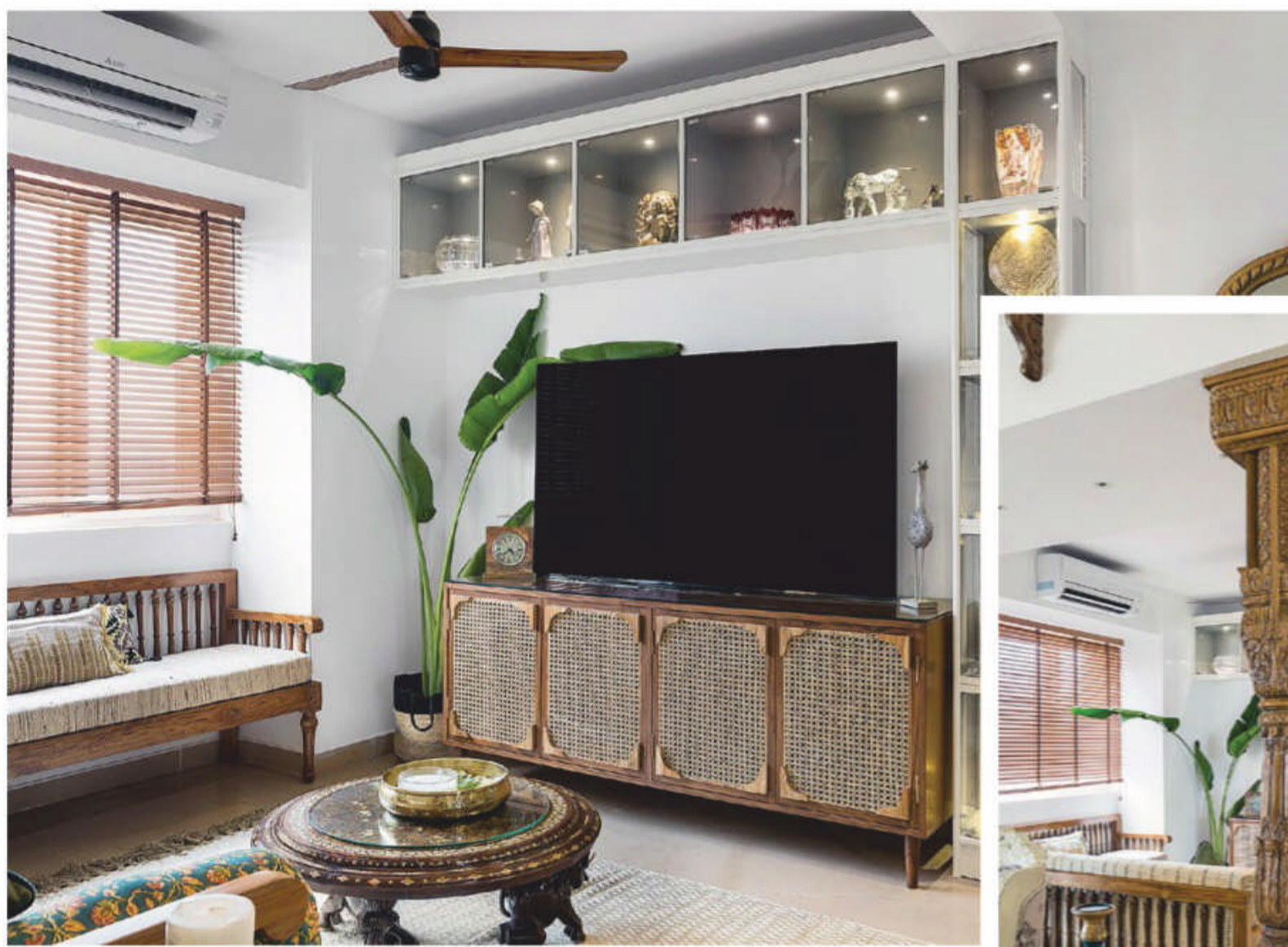
Located near the entrance and daughter's room, the study was originally the servant quarter that opened in the utility at the back. The wall was broken to amalgamate the study with the living. Being an integral wall in the formal area, double doors were designed to open up the narrow study room. Storage plays a key role in Ivory solid façade embellished with brass ornaments opens up to a lively springing study highlighted with a terracotta ikat wallpaper. The rug uplifts the French distress finished study and arched bookshelves.

The Project: The Art Loft | The Owner: Private | Room: Living room, dining room, lounge, study, and three bedrooms | Decor: Raw-urban with tropical feel | Design Firm: The Concreate Story



The Entryway

The hand shaded door accessorized with iron embellishments is adorned with red sandstone bricks and a chiselled pillar. A beautiful Goddess Saraswati sculpture on the left is surrounded by hand-painted creepers and surreal earthen pots. A larger than life Tanjor painting greets you at the entrance and the 40' long entryway is rendered with an interesting metallic floor. For a magical appeal, the design team suspended a brown mirror from the ceiling, that mirrors the floor pattern beautifully.



The Living and The Lounge

The hero of the space, the tall teak pillar divides the formal living with the lounge. A 9 ft long olive sofa sits lavishly placed right at the center of the wall, flanked with a large Pattachitra at the back. The French Aubusson upholding around the carved teak table speaks of luxury in the most subtle form. On the stone ledge dividing the lounge from the living, sits a hand carved and modeled diwan, with raw silk and organic cotton upholstery. The corners of the wicker console are highlighted with teak angles. The presence of the traveler palm along the louvered window talks of a tropical charm.



The Dining

The lounge wall extends to the dining with dramatic masks framed on olive-green boards. The theatrical lighting on the masks compliments the brass hanging lights on the dining table. The fluted glass door is a clever installation to seamlessly integrate the dining with the kitchen as and when required.



The Master Bedroom

Originally two separate bedrooms with a bathroom in the between were broken down to make one spacious room. A 360 degree rotating TV unit at the center was consciously finished in black and white to finely demarcate the living room and the bedroom. The charcoal black floor with brass inlay brings in the subtle eccentricity to the space. The bed and the lounge are finished in fine cane/ wicker detail and are placed against rustic raw white walls. The fluted side lamps add to the understated sides. The master bathroom is an exquisite experience



with shaded tiles laid in a diamond pattern.

The Daughter's Room

A room for a 12-year-old was designed to meet her future requirements. A terrazzo floor to bring a European charm with pastel blue hand carved shutters for an entire almirah wall, a queen size powder blue spindle poster bed with dramatic mul-mul sheer curtains describe the luxurious appeal of this space. The ceiling with a metallic baby blue wallpaper adds to the





Scintillating Allure

Elegant yet warm, welcome to an impressive Chennai home designed by **Sunita Yogesh of Sunita Yogesh Studio**, that is the tempered mix of colours and materials, which together make a picture perfect statement.

Words: Arushi Chaturvedi
Images: Yash Jain





HOME PROFILE

THE OWNERS: Nakkul and Sruti

LOCATION: Chennai

ROOMS: Living and dining room, kitchen, master bedroom, office room and guest bedroom

DECOR TYPE: Contemporary

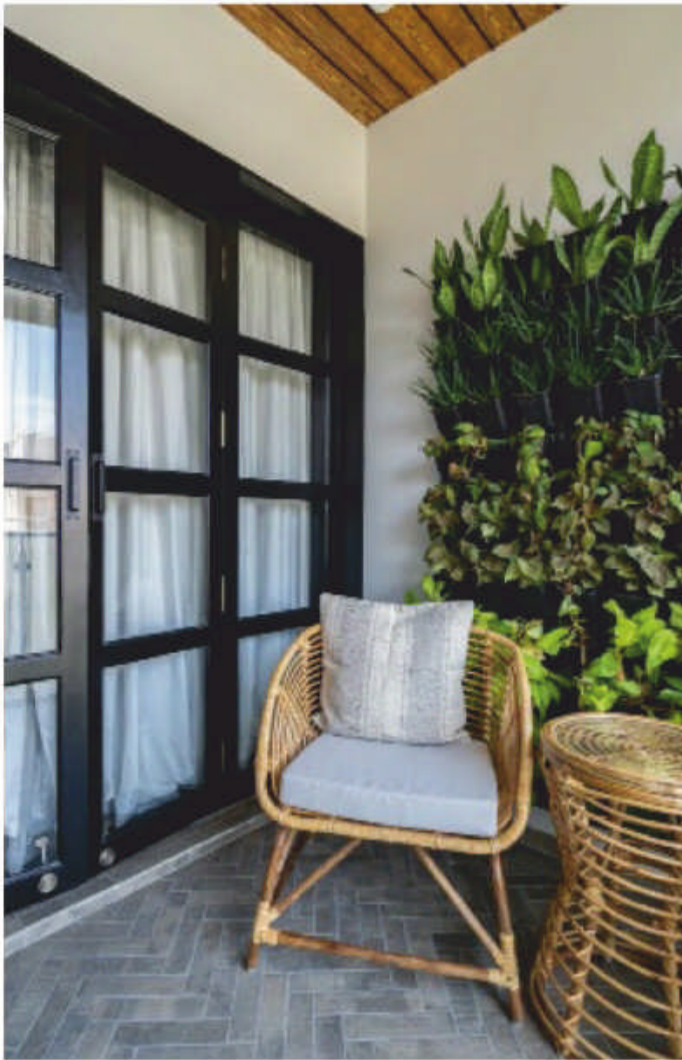
FIRM: Sunita Yogesh Studio

Handed over in its bare bones state, the talented Sunita Yogesh Studio were elated to be given the gift of a blank slate, that they could make fabulous with the dreams and desires of its owners. Design processes and projects everywhere were affected by the restraints set by the pandemic, and yet this incredible 1500 sq ft apartment's elegant vision and beauty could not have been held back for too long.

First impressions are important, and this home leaves one that impresses right from its entryway. Sunita reveals, "The first thing that caught my attention was the large foyer space which you don't find in most of the compact apartments, so we wanted to make it really stand out. We went with a striking black and white geometric patterned

tile for the flooring which makes a great first impression." These tiles provide undeniable character to the space, adding to the dynamic and contemporary charm created by the rich teak veneer and deep blue colour cabinetry. In addition a round mirror is placed here, that while being aesthetically pleasing, also makes this narrow space appear larger.

The collaborative approach adopted by the designer ensured that each space serves the tastes and needs of the owner perfectly. Sunita has utilized wooden flooring to tie together the varied visions of each space together, under a cohesive design language. The living and dining area were given an overall neutral palette, where white and soft tones are prominent. However pops of vibrancy are brought in using colourful pillows, accessories and throws. But what truly leaves

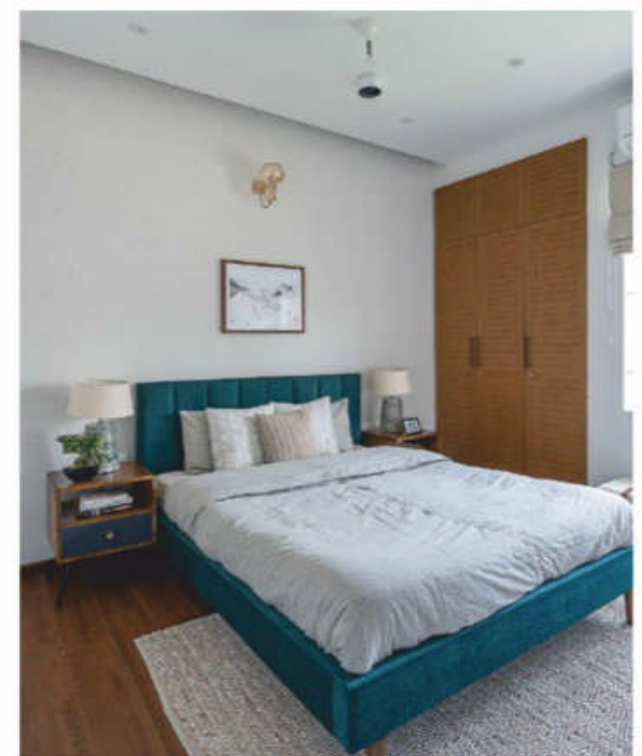
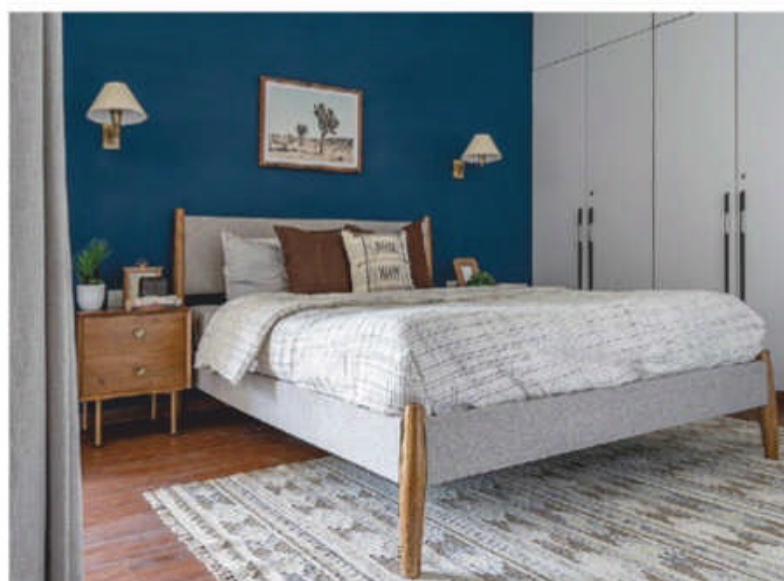


an impression in this space is the stone finish tile paneling that has been given to the television wall, just like in the balcony, adding layers to the subtle glamour of this home.

Every effort was made by the designer to maximize the magic that could be imbued into this apartment and dramatic steps were considered in achieving this goal. Key among such changes, that the interiors of this place called for, was to open up a wall so that the balcony could be accessed from the master bedroom as well. Further, the alcove that was provided for the kitchen was instead made a part of the master bedroom, to be utilized for storage purposes. And once this change was made, the kitchen was given a look that conveys contemporary glamour that is chic. With sparkling eyes Sunita revealed to us, “when our client mentioned that she dreamed of having a green kitchen we jumped at the opportunity and went with deep forest green for the cabinets and for a bit of bling chose brass hardware.” And by juxtaposing

the black countertop with the white tiles, the perfect balance was created.

While the master bedroom has been given a dark Prussian blue headboard, the colour palette there too consists of neutral hues and greys for the most part. The office room has been paid special attention to due to the nature of the owner’s occupation. Moody grey infusion along with the leather seating were chosen to give this space that professional look, while the blue accent chairs and rug give it an invigorating burst of energy. Just like the emerald green bed of the guest bedroom that grants the space glamour but is simultaneously inviting, the whole house masterfully and impressively achieve this throughout. THG





THE COLLABORATIVE APPROACH ADOPTED BY THE DESIGNER ENSURED THAT EACH SPACE SERVES THE TASTES AND NEEDS OF THE OWNER PERFECTLY

The Ideal Home

and Garden

Why would you subscribe
to The Ideal Home and
Garden? Here are

4 Really Good Reasons!

- 1 DELIVERED FREE TO YOUR DOOR
- 2 SAVE UP TO 31% ON COVER PRICE
- 3 NEVER MISS AN ISSUE AGAIN
- 4 AND MOST IMPORTANT OF ALL,
A SERIOUSLY GOOD QUALITY MAGAZINE...



THREE EASY WAYS TO SUBSCRIBE

1 Online
Visit at
<http://secure.nextgenpublishing.in/>

2 Call
+91 22 4352 5252

3 Post
Next Gen Publishing Pvt. Ltd.,
105-106, 1st Floor, B Wing, Trade World,
Kamala Mill Compound, Senapati Bapat Marg,
Lower Parel West, Mumbai - 400013.

TO SUBSCRIBE

International rate - 1 year USD 135 by air mail post

☐ **Pay ₹ 2,500 for 3 years subscription**
and save ₹ 1,820 on the cover price

☐ **Pay ₹ 1050 for 1 year subscription**
and save ₹ 390 on the cover price

YOUR DETAILS (ALL DETAILS IN CAPITAL LETTERS)

Name: Mr/Ms

Occupation Date of birth

Address

City State Pincode.....

Email.....

Mobile..... Phone (Off) Phone (Res)

Kindly draw the Cheque/DD/PO in favor of NEXT GEN PUBLISHING LTD. (Please add Rs. 20/- extra for outstation cheque)

Please Find enclosed Cheque/DD no. Dated

Bank Branch

Or please charge my credit card ☐ Visa ☐ MasterCard Card No. Card expiry date

Name (as appears on card) Date..... Signature.....

Please complete the order form and mail it to us at Next Gen Publishing Pvt. Ltd., 105-106, 1st Floor, B Wing, Trade World, Kamala Mill Compound, Senapati Bapat Marg, Lower Parel West, Mumbai - 400013. For clarifications, email: subscriptions@nextgenpublishing.net or **call +91 22 4352 5252**

TERMS AND CONDITIONS: Please allow 4-5 weeks for processing of your subscription. Copies will be sent by ordinary post only. Next Gen Publishing will not be responsible for postal delay, transit losses or mutilation of copies. No cancellation of subscriptions will be entertained after commencement of subscription. Please mention your name and address on the reverse of your DD/Cheque. All disputes are subject to the exclusive jurisdiction of courts in Mumbai only.



RESTING IN NATURE

A dwelling that perfectly showcases serenity and tranquility, this family retreat at Malabe in Sri Lanka by **Palinda Kannangara Architects** is an aesthetic revelation that soothes the soul!

Impressions: Yukti Kasera





The idea of biophilia masterfully backed by flawless architecture is what this family retreat conveys. Located close to paddy fields and framed by distant woodland, this renovation project and second home on 30 perches (760 sq m) of land has been conceived of as a homely haven for a retired couple (a Buddhist philosopher and his wife) who had spent a significant part of their life in a Colombo city house. They desired a tranquil space, away from the hectic bustles of cities and that would enable them to live in the lap to nature, breathing in the greens. Wisely curated for the owners to pursue their individual passions for gardening and writing, the retreat looks magnificently abundant with natural aesthetics.

PROJECT DETAILS:

ARCHITECT: PALINDA KANNANGARA

FIRM: PALINDA KANNANGARA ARCHITECTS

LANDSCAPE ARCHITECT VARNA SHASHIDHAR, VSLA

SITE AREA: 760 SQ M

TOTAL BUILT AREA: 302.3 SQ M

LOWER GROUND FLOOR AREA: 213.6 SQ M


UPPER GROUND FLOOR AREA: 88.7 SQ M

At the beginning, the old building was a neglected 1980's house with limited ventilation, dark interiors and no connections to the paddy landscape that surrounded the house. The site also had marvelous canopy trees. The new building upheld the structure of the old, while reorganizing to maximize the views. This also initiated opening to allow light and to integrate the structure with the landscape.

The existing levels of the stretch were retained and surrendered for use. Keeping the previous notions intact, the new house is remarkably built on the same footprints as the old. The foreground to the existing structure too was retained along with the saved canopy trees and to which a new living and service block was added. The interior layout was revised according to the requirements of the clients. The lower level which overlooks the beautiful paddy fields, contains the living dining spaces, a pantry, a study and master bedroom separated from the service block through a paved courtyard (which accommodates informal dining as well). The upper level has a family/ TV lounge, extending into a verandah that





overlooks the large garden, canopy trees, lily pond, bamboo groves and glimpse of a bedroom replete with a balcony that overlooks the trees. The best feature about the house is its ventilation which keeps it open and airy. Serene courtyards, a pond, green roofs and green wall (with native ferns and mosses), and large canopy trees all ensure rejuvenation and cool micro-climate within this house. Additionally, the green roof over the utility area planted with native plants attracts biodiversity and captures storm water which is absolutely surreal, making this house charming. 

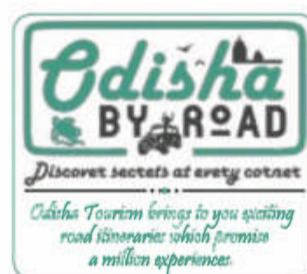
Odisha Calling

Hopping onto our vehicle with the most scenic landscape for company, take a look at our road trip through the magnificent heritage and traditions of magical Odisha.

Words: Arushi Chaturvedi

Images: Nitin Suryavanshi & Tally Talwar





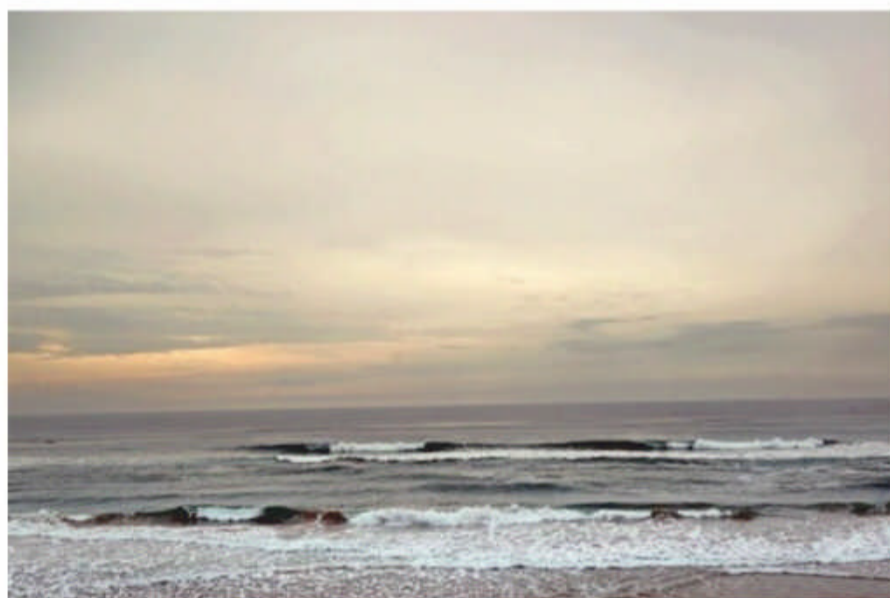
Equipped with a sense of exploration and a backpack full of essentials, we took the fruitful leap to explore the rich land of Odisha, that we were to discover, unlocks the door to a magical space that is packed to the brim with rare gems. Giving irresistible stops along the way, the architecture and history of this state kept us yearning to stay a bit longer wherever we went, relishing in the feeling of natural warmth.

With the intention of leaving no stone unturned in this plentiful traveler's destination, we started our road trip. We wanted to give ourselves a loose structure, just like all seasoned travelers, and so we chose to start our trip in the southern regions of Odisha. Our first stop was the famed Jiranga Monastery of Chandragiri, whose incredible cultural importance for the Buddhist community drew us towards it. But what had an equally bigger impact was its structure built in the Atanpuri

architectural style of Nalanda, by architects from Nepal, Tibet and Bhutan, thus giving it a distinct look. Mesmerized by its transportive structure and visuals, there was still no missing the looks of wondrous worship on the faces of Tibetan migrants that chose this area itself as one of their six settlements within the country. Hearing it being referred to as 'Phuntsokling', meaning land of happiness and plenty, by the Tibetan refugees showcased to us just how significantly impactful this place was.

Wanting to stay longer, and yet motivated to hit another key area on our road trip, we found ourselves relaxing at the Gopalpur Beach next. Unlike the crowded chaos of the popular beaches we had been to before this, this pristine beach felt like a hidden gem that only we were able to find and value. The local fishermen informed us of the rich history linking the beach to the glorious seafarers of Kalinga. Mostly untouched, the beach felt like we





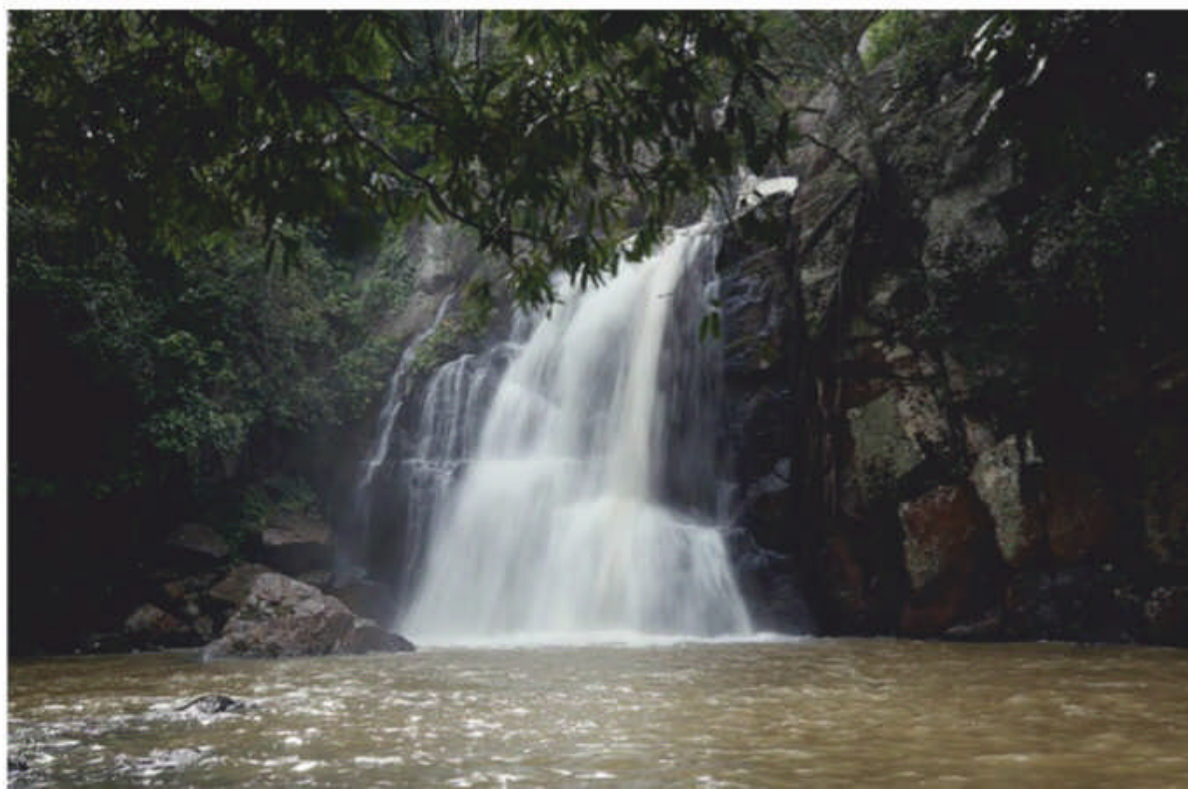
available in the local fish market here.

No road trip can be complete if you choose to not engage with the locals and their cherished form of crafts and traditions. Having seen sites that held both emotive and cultural importance, now we felt was the perfect time to indulge in some meaningful immersion into the lives of the beautiful people of Odisha. It led us first to Behrampur and then later to Koraput. Behrampur gave us

the chance to understand the making of those traditional silk sarees that are the envy of all. Not just the chance to own one, but this place also gave us a brief glimpse into the lives of the talented artisans that imbue these fabrics with their loving soulfulness. In the 300 kilometers away located Koraput, we got a chance to meet the advasi community and their Dongaria and Ikat work that has attained worldwide fame. Their warmth in inviting us into their homes and generosity in showcasing their masterful creation of textiles and figurines with traditional motifs, made with techniques that have been passed on

were sitting in the lap of nature, that somehow had been left unperturbed by humans. The clean water, and sonorous beach, genuinely were a healing experience for our city worn spirits that relished in the chance to enjoy nature at its best. While a look and stroll further gave us a wondrous view of The Palm Beach Resort that was originally built in 1914 and still casts a spell with

its maintained grandeur. But this is not the only reservoir of history that this place holds, as walking through the adjacent streets revealed dilapidated structures that still convey architecture that had once made bright the region with its attention to detail and craftsmanship. One personal recommendation is to get up early in the morning to enjoy the fresh and delicious catch that is






from generation to generation gave us memories to cherish.

Having taken a walk through the lives of the people and incredible artisans that showcase the rich heritage of this space, the next stop on our road trip took us to precious Daringbadi region, often dubbed the 'Kashmir of Odisha.' As we neared this location, the entire setup changed, giving us the sensation of true bliss in green splendor. A space specially dedicated to the enjoying life away from concrete jungles, the Nature Camp here offered us a healing proximity to nature. With clear access to beautiful sunrises and sunsets, amidst the enchanting smell of pine wood trees that fills the air, was truly memorable. We experienced the best time walking through this lushness, especially when we could later add to the calming sensation by traveling 15 kilometers to the Midubanda Waterfall. Hidden away in a way that is reminiscent of a fictional space, the magnificent visuals and sonorous sound of water created here the perfect setting that energized us organically. And whatever extra boost we needed was provided to us by the freshly prepared coffee that was waiting for us right outside the spot.

Despite covering a small portion of all this plentiful land, its



people and their traditions had to offer, it left us genuinely wanting much more. It was the perfect lead up to World Tourism Day, held on 27th September of every year, and which was chosen by the Odisha government to hold a rally that sheds glorious light on the treasures that this state holds for all travel fanatics. Held in tandem with Odisha Tourism, the 100 kilometers rally from Bhubaneswar to Chilika lake offers a chance to further celebrate this land and ignite a passion to further explore its hidden gems. A project that has honestly already taken inextricable root in us! 



ENHANCING GREENS

Well, bits of accessories can surely upgrade any green oasis. TIHG has compiled some adorable garden accessories that can absolutely spruce up your garden decor!

Research: Yukti Kasera



CLOCKWISE FROM TOP: Indoor Garden Magical Floral Room with Booboo Swing Sofa*, **CIRCU Magical Furniture**; Shepherds Hook Garden Lantern, ₹1,898 approx, **Lights4fun**; Corinth Garden Urn, ₹13,731 approx, **Sweetpea & Willow**; Blue Portable Barbecue, ₹6,498 approx, **Annabel James**; Roshults Garden Outdoor Towel Rack*, **Chaplins Furniture**
*prices on request

Whether you fill the space with functional accessories or decorative elements, these can serve as quaint additions to your garden.





Anything contemporary and unique immediately adds charm to the setting. Think creatively and maximise vibrancy with few must have improvements!



CLOCKWISE FROM TOP: Stowell Pet Grooming Bucket, Rs1,615 approx, **Garden Trading**; Succulent Party, Wooden & Terracotta Pots*, all from **Earthly Creations**; Brass PAW Door Knocker in Nickel Finish, ₹3,516 approx, **Brass bee**; Take Away Portable USB Charged Table Lamp designed by Nahtrang for Faro Barcelona, ₹12,521 approx, **Lime Lace**; Lyra Series, ₹2,100 small, ₹2,400 medium, ₹3,250 large, **Palasa**; Floral Madness Collection*, **Perkins & Morley**
*prices on request

STORE MAP

A

AnanTaya

The Kanota Courtyard, Kanota Bagh
Jaipur, Rajasthan
Instagram: @anantaya_decor
www.anantayadecor.in

Annabel James

www.annabeljames.co.uk

B

Baaya Design

Senapati Bapat, A-Wing,
Ground Floor, Prathamesh Tower,
Raghuvanshi Mills, Road, Lower Parel
West, Mumbai, Maharashtra 400013
Call: 022 24979463
Instagram: @baayadesign
www.baayadesign.com

Baro

12, Sun Mill Compound, Lower Parel,
Mumbai 400013 | Call: +91 9004981728
Instagram: @baro.india
www.baro-india.com

Beyond Designs

Flagship Store :Khasra No. 432, 433,
434, Ground Floor Opposite Metro Sta-
tion Pillar No. 89, M G Road, Sultanpur
Delhi 110030 | Call: 011 2680 4180
www.beyonddesigns.in

Brass bee

www.brassbee.co.uk

C

Chaplins Furniture

www.chaplins.co.uk

Cocoon Fine Rugs

D-12 Hanuman Nagar, Vaishali Nagar,
Jaipur, Rajasthan 302021
Call: 022 24928647 (48)
Instagram: @cocoonfinerugs
www.cocooncarpets.com

CIRCU Magical Furniture

www.circu.net

D

Dash Square

No. 58, St. John's Road
Bangalore 560 042
Call: 80 412 55 666
8-2-684/BP/1 & 2/A
First Floor, Banjara Hills
Hyderabad - 500 034
Call: 90 354 19 911
www.dashsquare.com

Design Clinic India

24, Gujarat Vihar, Near Preet Vihar Metro
Station, Vikas Marg, New Delhi 110092
Call: 09899535900

E

Earthly Creations

D-138, D Block, Sector 36, Noida
Uttar Pradesh 201303
Call: 098105 02046
www.earthlycreations.in

Essajeess Atelier

Ground Floor, Lansdowne House
Battery St, Apollo Bandar
Colaba, Mumbai | Call: 022 2202 1071
www.essajeessatelier.com

Ethimo

www.ethimo.com

F

Fabindia

C-40 Gate No-5,
Pocket C, Okhla Phase II,
Dayal Estate, New Delhi 110020
Call: 01140692000
Instagram: @fabindiahome
www.fabindia.com

G

Garden Trading

www.gardentrading.co.uk

Good Earth

S-06, A-3 District Centre,

Select City Walk Mall

Saket, New Delhi
11-12 Raghuvanshi Mills Compound
Senapati Bapat Marg, Lower Parel,
Mumbai 400013
www.goodearth.in

H

Hands

372/74, Mehrauli Gurgaon Road
Sultanpur, New Delhi 110030
Call: 93133 41775, Gala no. 32/ R & 32/ H
Laxmi Industrial estate, New Link
oad, Andheri West, Mumbai 400 053
Call: 022 2632 0609
www.handscarpets.com

Hastkala

Opp. Rawal Hospital, Near petrol pump,
Ajmer road, Bhankrota, Jaipur, Rajasthan
www.hastkala.net

House Raccoon

www.houseraccoon.com

I

Idyll Home

www.idyllhome.co.uk

Indiholic

Sri Maruthi Krupa, 1st Floor, Whitefield,
Bangalore 560066 | Call: 9611217063
Instagram: @indidiholicofficial
www.indiholic.com

Iram Sultan Design Studio

www.iramsultan.com

J

Jannat Vasi Interior Design

www.jannatvasi.com

K

Kaati Carpets

N21, CR Park, Lower Ground Floor
New Delhi 110019 | Call: 9654046033
Instagram: @kaaticarpets
www.kaati.in

Kalpane

www.kalpane.in
Call: 9108595505

L

Lime Lace

www.limelace.co.uk

Lights4fun

www.lights4fun.co.uk

M

MADS Creations

Unit:- 527-528, 5th Floor, Vipul Trade
Center, Sohna Rd, Sector 48, Gurugram,
Haryana 122018 | Call: 078350 97019
www.madscreations.in

Magari

872/D, Ground Floor Trinity Woods
80 Feet Rd, HAL 2nd Stage

Indiranagar, Bengaluru
Karnataka 560038
Call: 80 4161 6101 |www.magari.in

Mambo Unlimited Ideas

www.mambounlimitedideas.com

Mangrove Collective

Plot no. 13, 1, Mathura Rd, Ashoka
Enclave 3

Subash Nagar

Sector 35, Faridabad
Haryana 121003 | Call: 0129 404 3838
www.mangrovecollective.in

Minnie Bhatt Design

G-2, Trade World, A Wing, Kamala Mill
Compound, Lower Parel, Mumbai
Call: 022 2498 9902
www.minniebhatt.com

N

Neha Jhunjhunwala

Instagram: @design.on.the.go

Nirali BG

www.niralibgsinks.com

O

Ochre At Home

83, JBS Haldane Ave
East Topsia, Gobra, Kolkata
West Bengal 700046
Call: 098309 39995
www.ochreathome.com

OBEETEE Flagship Store

145 Sultanpur, Mehrauli Gurgaon Road
South West Delhi
Delhi- 110030
Call: 7888713940 | www.obeetee.com

P

Palasa

4th B Block, 82, 7th Cross Rd
KHB Block Koramangala, Koramangala
4-B Block, Bengaluru 560034
www.palasa.co.in

Palinda Kannangara Architects

www.palindakannangara.com

Peacock Life

Neelam Sagar Farms
Karjat Road Off Chowk Village
Next to ND Studios, Hatnoli
www.peacocklife.com

Pepperfry

Instagram: @pepperfry_official
www.pepperfry.com

Perkins & Morley

www.perkinsandmorley.com

R

Richa Bahl Design Studio

Instagram: @richabahldesignstudio

Rug Berry

E 131, Sector 63, Noida, Uttar Pradesh
Instagram: @rugberry
www.rugberry.in

Rug'Society

Instagram: @rug_society

Rugs & Hugs

Instagram: @rugsandhugsin

S

Sarthak Sahil Design Co

Call: 9640835554
Instagram: @sahilsarthak
www.sahilsarthak.com

Sergey Makhno Architects

www.mahno.com.ua

Sharmila Patil

Instagram: @sincerestoryteller

Studio Jencquel

www.studiojencquel.com

STUDIO Smitamoksh

C 105, Elanza Crest, off SBR, Gujarat
Instagram: @studiosmitamoksh

Sunita Yogesh Studio

Instagram: @sunitayogeshstudio
www.sunitayogeshstudio.com

Sweetpea & Willow

www.sweetpeaandwillow.com

T

The Carpet Cellar

Anand Lok, August Kranti Marg,
Opposite Kamla Nehru College,
New Delhi -110049
Call: 9811486086, 011-26261777
Instagram: @thecarpetcellar
www.carpetcellar.com

The Concreate Story

Instagram: @theconcreatestory

The Drawing Studio

Instagram: @thedrawingstudio
Call: 9920927617
www.thedrawingstudio.in

The French Bedroom Company

www.frenchbedroomcompany.co.uk

The House of Things

Bedla Talai, Sapetiya Road
Bedla, Udaipur 313011
Instagram: @thehouseofthings
www.thehouseofthings.com

The Orange Lane

31 N., Laxmi Industrial Estate,
Andheri West Mumbai
www.shabnamgupta.com

The Rug Republic

225, Phase III, Okhla Industrial Area,
New Delhi, 110020
Call: 07617656777
Instagram: @the_rug_republic
www.therugrepublic.in

The Rugs Story

17, Vasant Vihar Poorvi Marg,
Block E, Vasant Vihar,
New Delhi 110057
Call: 011 41046435
Instagram: @therugsstory
www.therugsstory.com

Thought Parallels

33 / 6625 – B3, Empora Views,
Malaparamba - 673009, India
Call: 0495 237 7899
Instagram: @thoughtparallels
www.thoughtparallels.com

U

UDC Homes

Instagram: @udchomes

V

VSLA

www.vsla.in

W

WallPepper

www.wallpepper.it

Y

Yellow Octopus

www.yellowoctopus.com.au

Yorkshire Fabric Shop

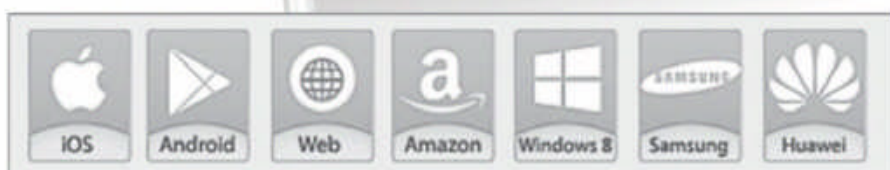
www.yorkshirefabricshop.com

Now read your favourite magazine wherever you go...
Available on PC... Mac... Tablet... or any other handheld device!



Digital Platform Partners

Available on



www.zinio.com/idealhomeandgarden
www.magzter.com/publishers/Next-Gen-Publishing-Ltd

